



2024

TrailLink Unlimited



Guides



Circle T Trail

Minnesota



Circle T Trail

Minnesota

The Circle T Trail forms a giant loop through the George Washington State Forest in the potholed lake region of northern



The Circle T Trail forms a giant loop through the George Washington State Forest in the potholed lake region of northern Minnesota. The remote trail is one in a series of trails in the region and mostly used by snowmobilers. The trail loops around several lakes through bogs and forested lands, providing access to fishing, camping, hiking and other trails for non-motorized activities.

The Circle T Trail links to the [Circle L Trail](#) in the southwest section of its loop, east of Bass Lake.



Circle T Trail

Minnesota

States: Minnesota

Counties: Itasca

Length: 39.5miles

Trail end points: Nashwauk to George
Washington State Forest

Trail surfaces: Dirt,Grass

Trail category: Rail-Trail

Trail activities: Horseback Riding,Mountain
Biking,Snowmobiling,Walking

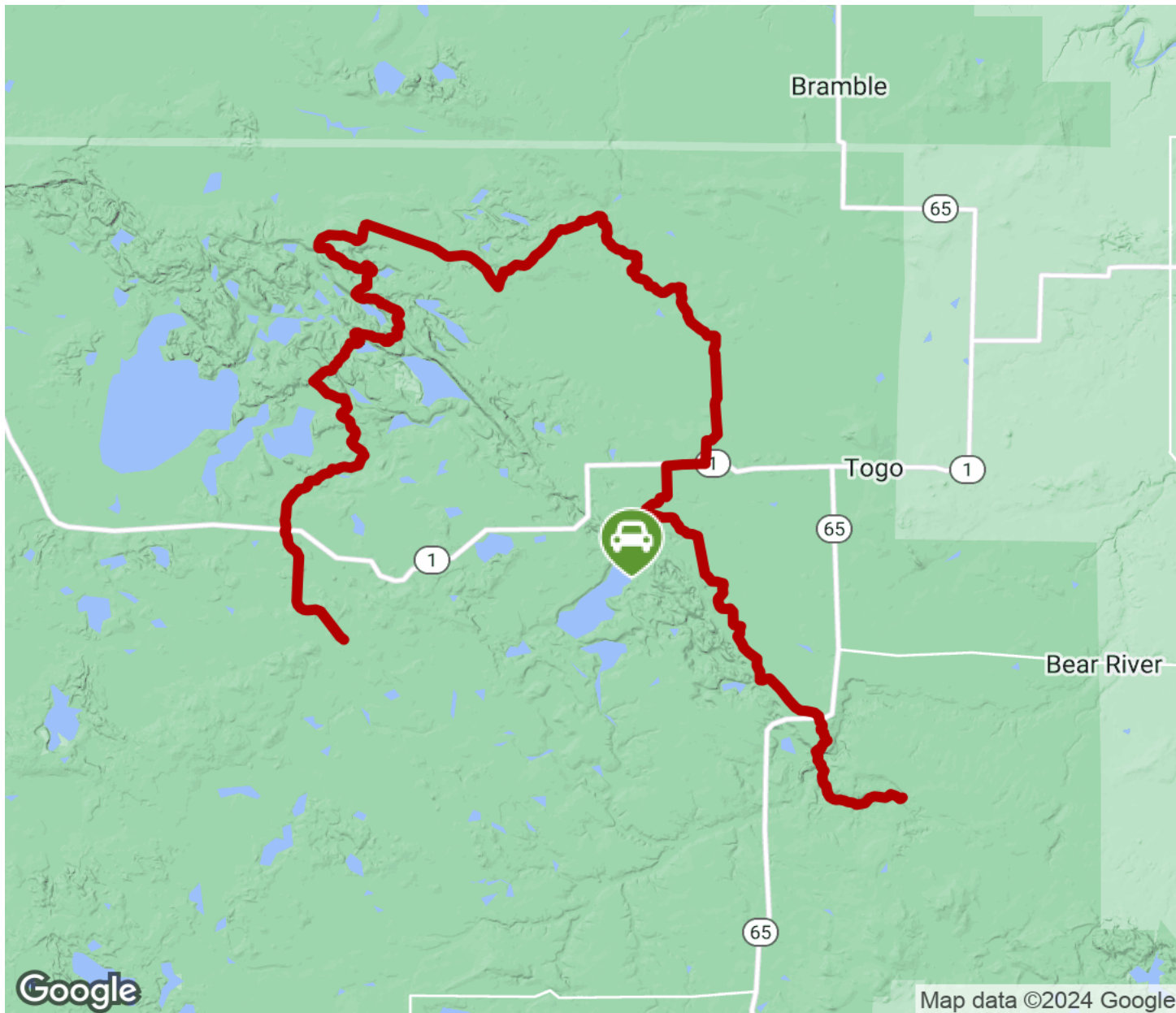
Parking & Trail Access

Access and parking for the Circle T Trail is available just east of Thistledeew Lake day-use area and campground. From Nashwauk take State Route 65 (N) 27 miles to County Road 551; turn west and go 4 miles. You can also park along SR 1 northeast of Bass Lake, where the road crosses the Circle T Trail.



Circle T Trail

Minnesota



Trailhead



Restroom



Parking



Water Fountain



Tunnel



TrailLink
by Rails-to-Trails Conservancy

TrailLink.com