



2026

TrailLink Unlimited 

Guides



Soo Line Trail (Northern Route)

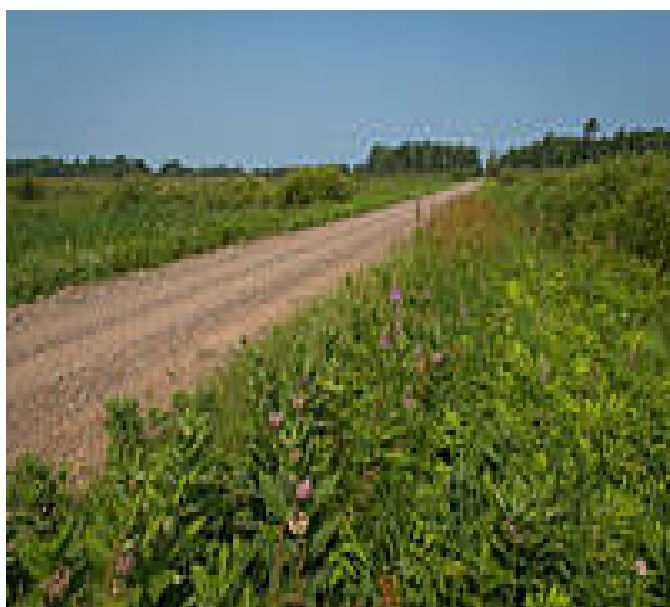
Minnesota



Soo Line Trail (Northern Route)

Minnesota

Unlike the traditional rail trail, which are often most used by bikers, the Soo Line Trail is primarily an ATV trail and is composed



ponds and lakes (hence the state's apt nickname, Land of a Thousand Lakes).

At mile 20, the trail passes between Portage Lake and Leech Lake. At mile 75, the trail passes the Bergland Park Campground, which offers 9 campsites as well as toilets and showers.

Moose Lake anchors the southern end of the trail and is a sizeable town with lodging, dining, shopping and convenience options.

Connections

The Soo Line North Trail connects with the 114-mile [Soo Line South Trail](#) at Moose Lake.

Unlike the traditional rail trail, which are often most used by bikers, the Soo Line Trail is primarily an ATV trail and is composed of a primarily rough dirt and gravel surface.

The trail runs for 113 miles through the rural Northeast of Minnesota, which is regionally home to only to 300,000 people across a 7-county region. Cass Lake, which anchors the northern end of the trail, receives an average of 44 inches of snowfall annually, making snowmobiling a popular winter pastime along this trail.

About the Route

Starting at the trail's northern endpoint in Cass Lake, a small trail town with less than 1,000 inhabitants, the trail rolls southeast through hardwood forest dotted with small



Soo Line Trail (Northern Route)

Minnesota

States: Minnesota

Counties: Aitkin, Carlton, Cass

Length: 113miles

Trail end points: US 2 (Cass Lake) to Soo Line Trail - Southern Route (Moose Lake)

Trail surfaces: Ballast, Gravel

Trail category: Rail-Trail

Trail activities: ATV, Horseback

Riding, Mountain

Biking, Snowmobiling, Walking, Cross Country

Skiing

Parking & Trail Access

The Soo Line Trail runs between the US 2 (Cass Lake) and the Soo Line Trail - Southern Route (Moose Lake).

Parking is available at:

- 45 W Main St (Remer)
- 510 Marconi St (Palisade)

In the winter, there is plowed parking at Moose Lake.

See [TrailLink Map](#) for all parking options and detailed directions.

Note: Non-residents of Minnesota need OHV passes for ATV use along this trail. See more [here](#).



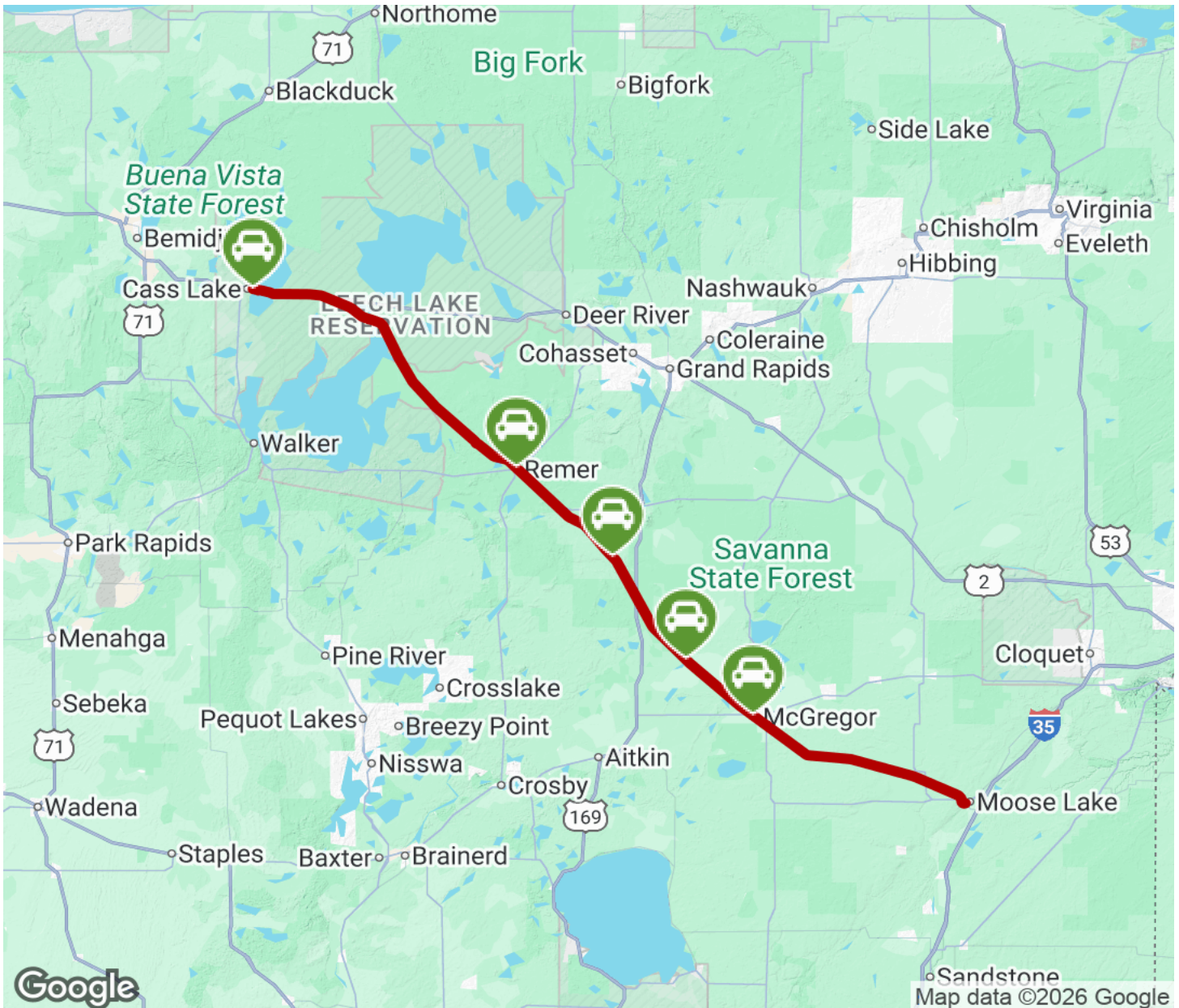
TrailLink
by Rails-to-Trails Conservancy

TrailLink.com



Soo Line Trail (Northern Route)

Minnesota



Trailhead



Restroom



Parking



Water Fountain



Tunnel



TrailLink
by Rails-to-Trails Conservancy

TrailLink.com