



2026

TrailLink Unlimited 

Guides



**Arrowhead  
State Trail**  
*Minnesota*



## Arrowhead State Trail

Minnesota

*Arrowhead State Trail runs between the Taconite State Trail at Pike River Flowage near Peyla and the Blue Ox Trail just south of*



densely forested areas pocked with lakes of all sizes. Trail users will also encounter open rocky areas here, making for some interesting travel.

Shelters and camping are available along the trail.

Arrowhead State Trail runs between the [Taconite State Trail](#) at Pike River Flowage near Peyla and the [Blue Ox Trail](#) just south of International Falls. The trail is popular among snowmobilers, and nearly 70 miles of the 135-mile route are suitable for equestrians, mountain bikers and hikers.

During summer, many areas of the trail may have standing water, especially in the northern segment, where it passes through wetlands and flatter ground. The trail is relatively level between International Falls and the Ash River. It's also more open through here, and all along the route, the trail passes through remote terrain.

From Peyla north through Kabetogama State Forest, the trail traverses more hilly terrain and passes through more



# Arrowhead State Trail

Minnesota

**States:** Minnesota

**Counties:** Koochiching, St. Louis

Length: 135 miles

**Trail end points:** Blue Ox Trail to Taconite State Trail

**Trail surfaces:** Asphalt, Ballast, Dirt, Grass, Gravel

**Trail category:** Rail-Trail

**Trail activities:** Horseback Riding, Mountain Biking, Snowmobiling, Walking, Cross Country Skiing

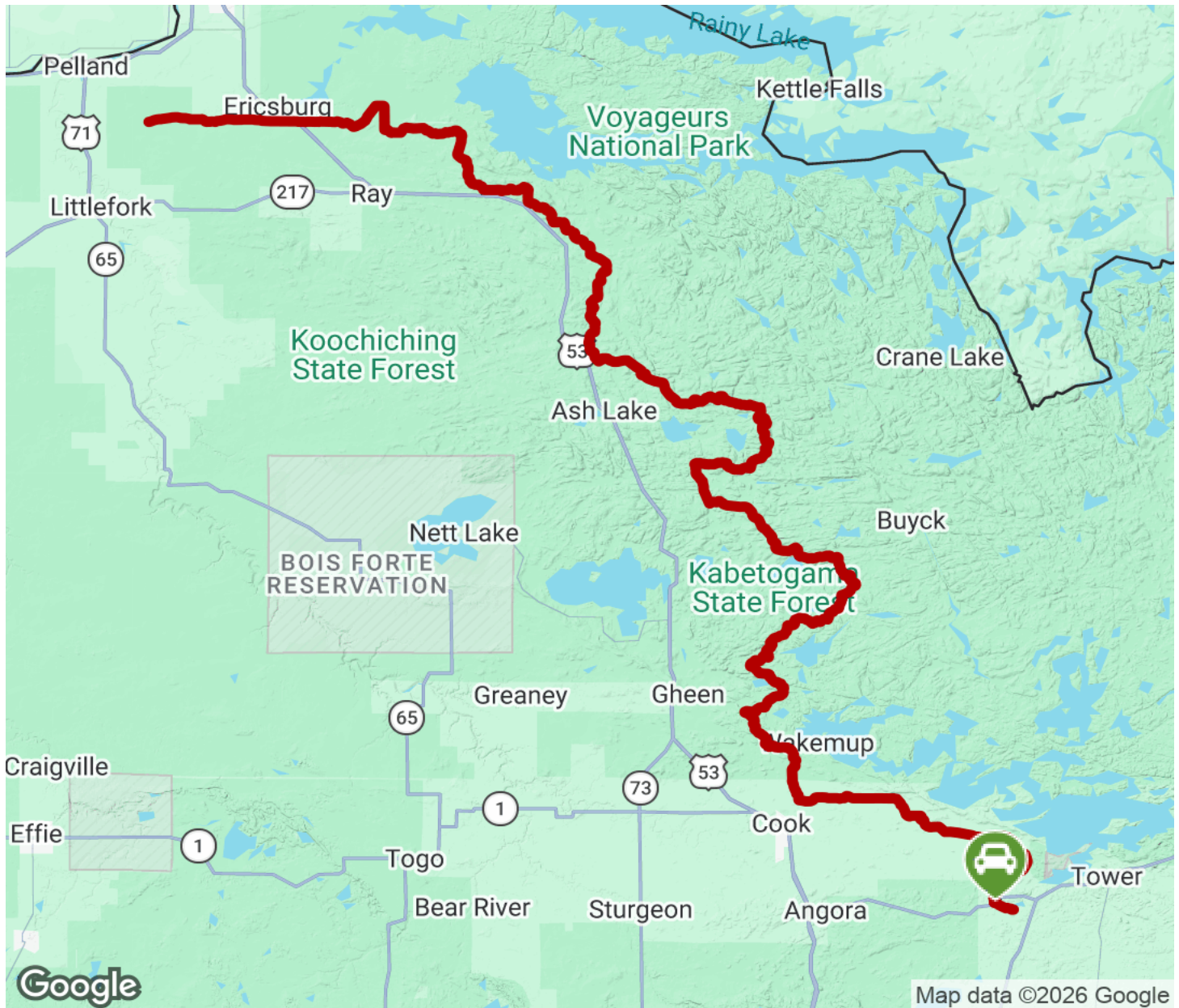
## Parking & Trail Access

Parking for the Arrowhead State Trail is available near the southern terminus off State Route 1.



# Arrowhead State Trail

Minnesota



Trailhead



Restroom



Parking



Water Fountain



Tunnel



**TrailLink**  
by Rails-to-Trails Conservancy

**TrailLink.com**