



2025

TrailLink Unlimited 

Guides



## Tuxachanie National Recreation Trail

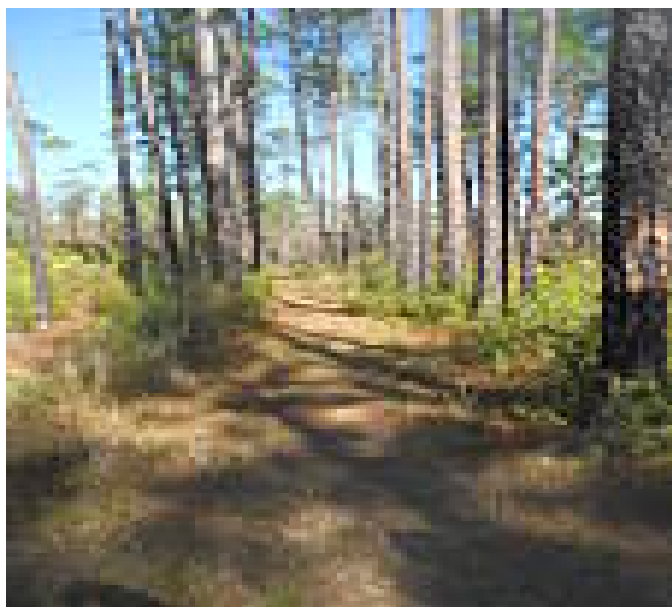
*Mississippi*



## **Tuxachanie National Recreation Trail**

*Mississippi*

*The Tuxachanie Trail is a National Recreation Trail offering a 12-mile hike through southern Mississippi's Desoto National Forest.*



Overnight primitive camping is permitted, but campsites must be 100 feet away from the trail to preserve its natural character. Drinking water and restrooms are not provided along the trail but can be found at Airey Lake Recreation Area.

While this trail is designated for foot travel only, there is a short section that is used in conjunction with the Big Foot Horse Trail. No motorized vehicles are allowed. Fishing is permitted mid-trail at the Airey Lake Recreation Area and at the P.O.W. Lake Recreation Area at the trail's eastern end.

The Tuxachanie Trail is a National Recreation Trail offering a 12-mile hike through southern Mississippi's Desoto National Forest.

### About the Route

A portion of the trail follows an old abandoned railroad that once served the sawmill of the Dantzler Lumber Company at Howison. Hikers will encounter a variety of forest vegetation; savannahs and swamps lie between the ridges. Here, pitcher plants and palmettos grow in abundance, as well as the occasional wild orchid. Timbered ridges of longleaf and slash pine add to the scenery. On its western end, the first 1/4 mile of trail from US 49 has a hard-packed surface, allowing for wheelchair accessibility; however, there are some roots.



**TrailLink**  
by Rails-to-Trails Conservancy

**TrailLink.com**



# Tuxachanie National Recreation Trail

Mississippi

**States:** Mississippi

**Counties:** Harrison, Stone

Length: 12.1 miles

**Trail end points:** 26204-26154 US 49 (Saucier)  
to P.O.W. Campground (Saucier)

**Trail surfaces:** Dirt

**Trail category:** Rail-Trail

**Trail activities:** Fishing, Walking

## Parking & Trail Access

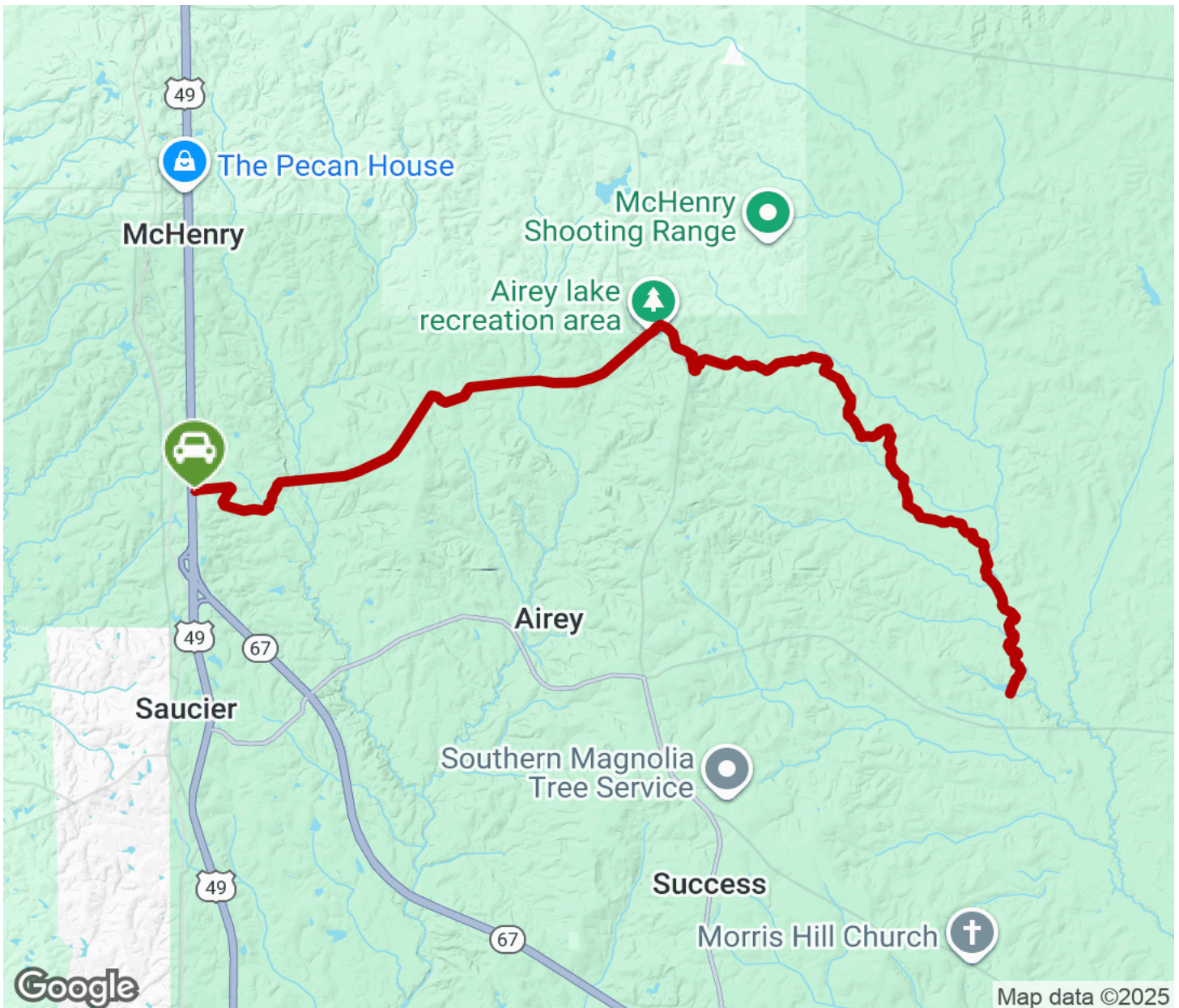
The Tuxachanie National Recreation Trail runs between 26204-26154 US 49 (Saucier), where parking is available, and P.O.W. Campground (Saucier).

Please see [TrailLink Map](#) for detailed directions.



# Tuxachanie National Recreation Trail

Mississippi



Trailhead



Restroom



Parking



Water Fountain



Tunnel



**TrailLink**  
by Rails-to-Trails Conservancy

**TrailLink.com**