



2025

TrailLink Unlimited 

Guides



**East Ithaca  
Recreation  
Way**  
*New York*



## East Ithaca Recreation Way

New York

*The East Ithaca Recreation Way on East Hill is primarily built upon the rail bed of the old Ithaca and Cortland Railroad, which later*



The East Ithaca Recreation Way on East Hill is primarily built upon the rail bed of the old Ithaca and Cortland Railroad, which later became part of the Lehigh Valley Railroad. The trail skirts the campus of Cornell University and traverses a natural area along Cascadilla Creek between Pine Tree Road and Game Farm Road. Then it cuts south from Pine Tree toward Maple Avenue, following it west for a short distance before heading south behind neighborhood back yards to Honness Lane.

You'll find rest areas with benches along the trail.



# East Ithaca Recreation Way

*New York*

**States:** New York

**Counties:** Tompkins

Length: 2.2miles

**Trail end points:** Honness Lane (East Ithaca) to  
Game Farm Road (Dryden)

**Trail surfaces:** Asphalt,Cinder,Gravel

**Trail category:** Rail-Trail

**Trail activities:** Bike,Wheelchair

Accessible,Horseback Riding,Walking,Cross  
Country Skiing

## Parking & Trail Access

Limited parking is available off Game Farm Road just south of the trail.



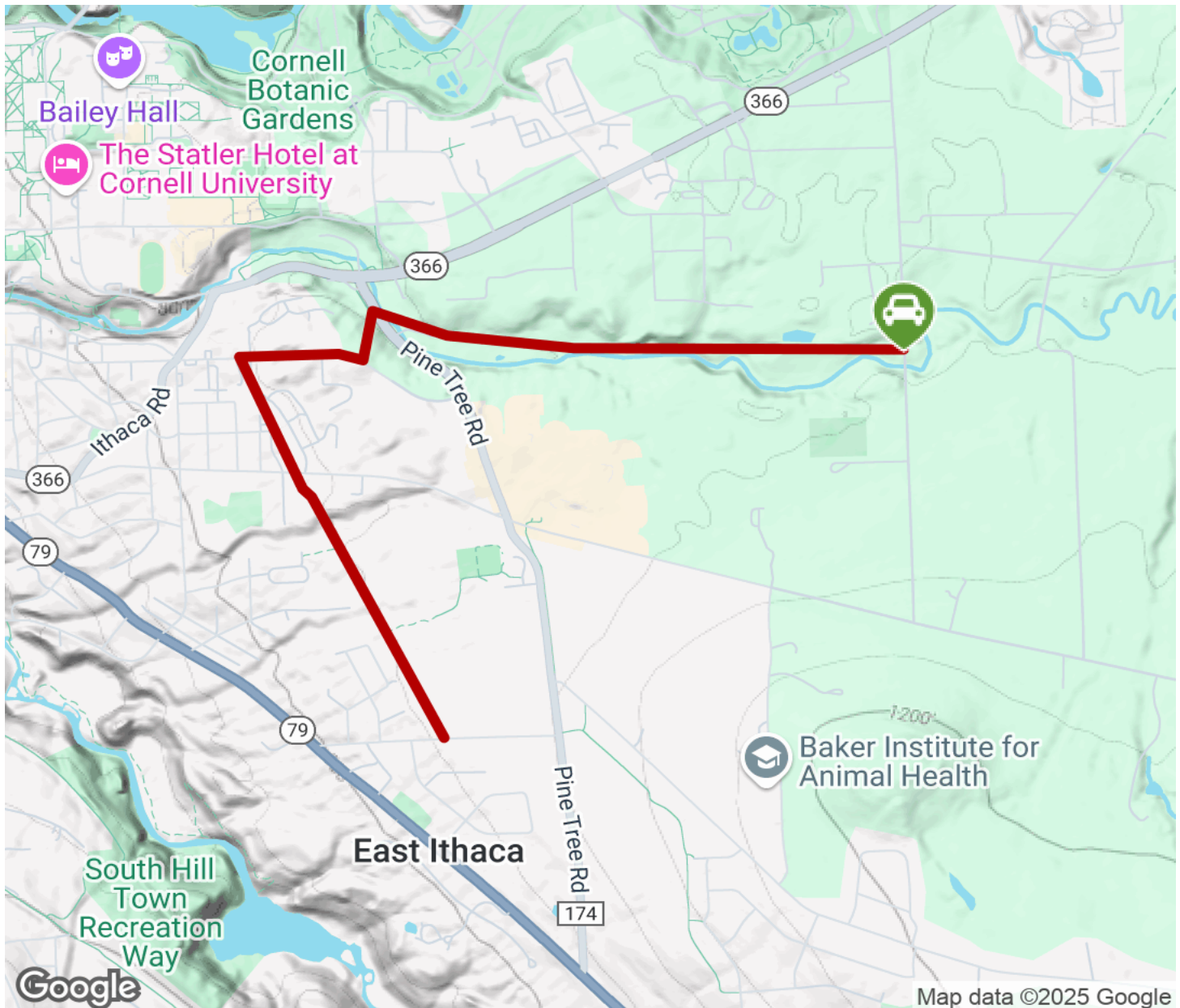
**TrailLink**  
by Rails-to-Trails Conservancy

**TrailLink.com**



# East Ithaca Recreation Way

New York



Trailhead



Restroom



Parking



Water Fountain



Tunnel



**TrailLink**  
by Rails-to-Trails Conservancy

**TrailLink.com**