



2025

TrailLink Unlimited



Guides



**East Ithaca
Recreation
Way**
New York



East Ithaca Recreation Way

New York

The East Ithaca Recreation Way on East Hill is primarily built upon the rail bed of the old Ithaca and Cortland Railroad, which later



The East Ithaca Recreation Way on East Hill is primarily built upon the rail bed of the old Ithaca and Cortland Railroad, which later became part of the Lehigh Valley Railroad. The trail skirts the campus of Cornell University and traverses a natural area along Cascadilla Creek between Pine Tree Road and Game Farm Road. Then it cuts south from Pine Tree toward Maple Avenue, following it west for a short distance before heading south behind neighborhood back yards to Honness Lane.

You'll find rest areas with benches along the trail.



TrailLink
by Rails-to-Trails Conservancy

TrailLink.com



East Ithaca Recreation Way

New York

States: New York

Counties: Tompkins

Length: 2.2miles

Trail end points: Honness Lane (East Ithaca) to
Game Farm Road (Dryden)

Trail surfaces: Asphalt,Cinder,Gravel

Trail category: Rail-Trail

Trail activities: Bike,Wheelchair

Accessible,Horseback Riding,Walking,Cross
Country Skiing

Parking & Trail Access

Limited parking is available off Game Farm Road just south of the trail.



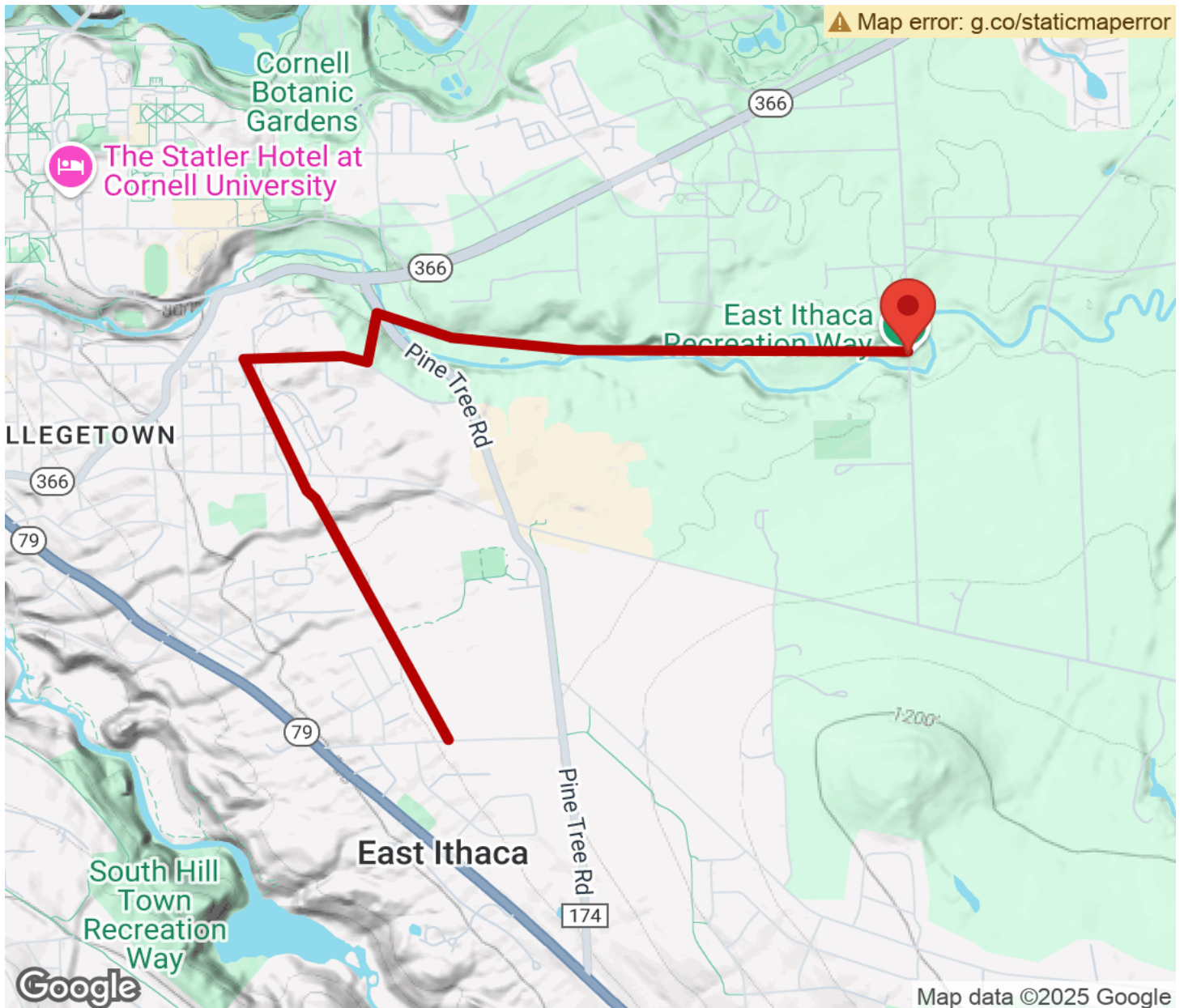
TrailLink
by Rails-to-Trails Conservancy

TrailLink.com



East Ithaca Recreation Way

New York



Trailhead



Restroom



Parking



Water Fountain



Tunnel



TrailLink
by Rails-to-Trails Conservancy

TrailLink.com