



2025

TrailLink Unlimited



Guides



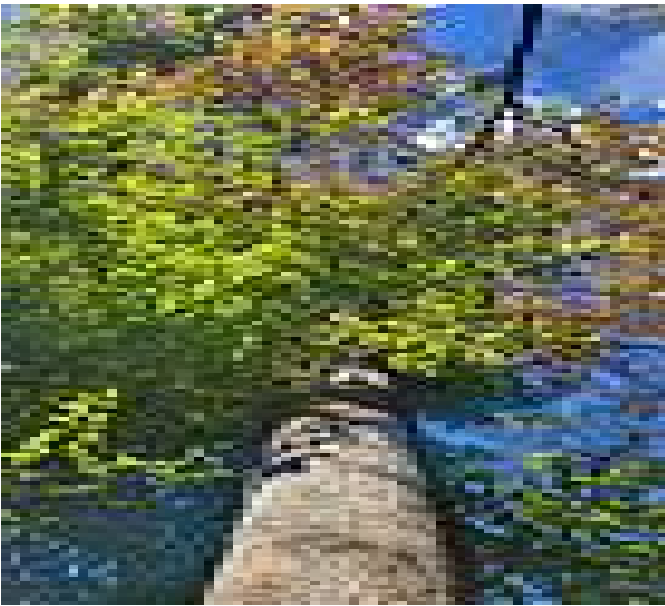
**Pemberton
Rail-Trail**
New Jersey



Pemberton Rail-Trail

New Jersey

Located about 25 miles east of Philadelphia, the Pemberton Rail-Trail is an excellent example of grassroots activism resulting in the



span 25 miles.

Located about 25 miles east of Philadelphia, the Pemberton Rail-Trail is an excellent example of grassroots activism resulting in the creation of a community-based rail-trail. The Pemberton Rotary Club was largely responsible for creating the trail, having taken the leadership role in planning, developing and maintaining the trail.

The trail begins at Hanover Street by a restored railroad station that serves as a museum. Several old train cars and assorted other railroad artifacts are found here. The trail is wooded on both sides and crosses a stream at about the midpoint.

The trail is part of a larger, developing regional trail system called the [Rancocas Greenway](#), which will one day



Pemberton Rail-Trail

New Jersey

States: New Jersey

Counties: Burlington

Length: 1.6miles

Trail end points: Hanover Street (Pemberton)
to Birmingham Road (Juliustown)

Trail surfaces: Crushed Stone

Trail category: Rail-Trail

Trail activities: Bike, Walking, Wheelchair
Accessible, Cross Country Skiing

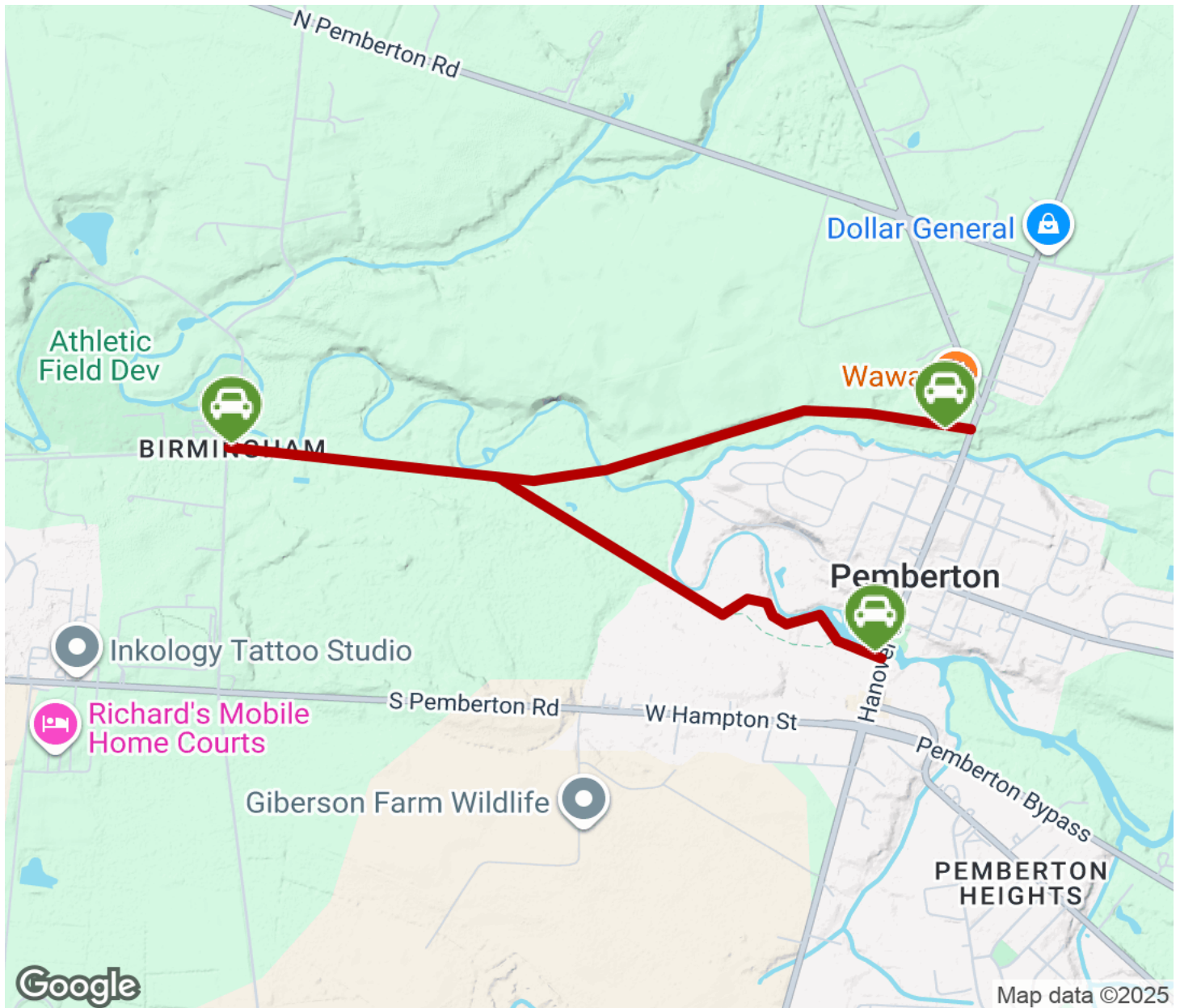
Parking & Trail Access

From the north, take the NJ Turnpike to Route 206; then take County Route 530 East into South Pemberton. Take a left (north) onto Hanover Street. Follow this for about 0.5 miles and you'll see an old passenger station on the left. Park here where it is approved and safe.



Pemberton Rail-Trail

New Jersey



Trailhead



Restroom



Parking



Water Fountain



Tunnel



TrailLink
by Rails-to-Trails Conservancy

TrailLink.com