



2026

TrailLink Unlimited 

Guides



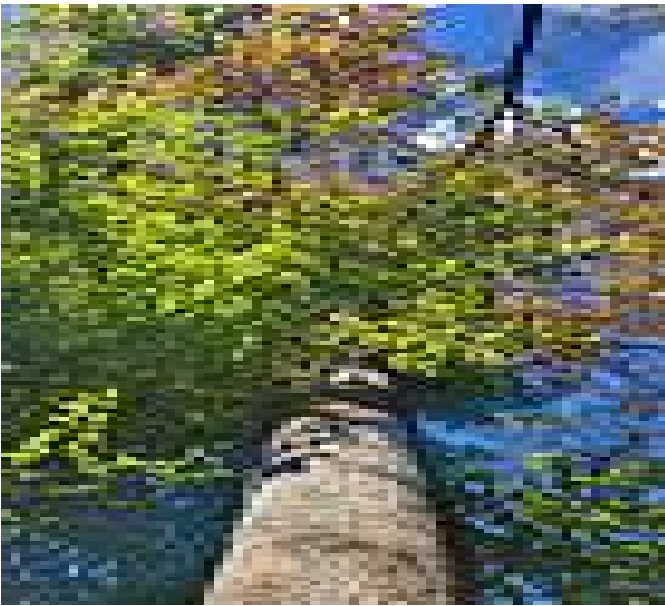
**Pemberton  
Rail-Trail**  
*New Jersey*



## Pemberton Rail-Trail

*New Jersey*

*Located about 25 miles east of Philadelphia, the Pemberton Rail-Trail is an excellent example of grassroots activism resulting in the*



span 25 miles.

Located about 25 miles east of Philadelphia, the Pemberton Rail-Trail is an excellent example of grassroots activism resulting in the creation of a community-based rail-trail. The Pemberton Rotary Club was largely responsible for creating the trail, having taken the leadership role in planning, developing and maintaining the trail.

The trail begins at Hanover Street by a restored railroad station that serves as a museum. Several old train cars and assorted other railroad artifacts are found here. The trail is wooded on both sides and crosses a stream at about the midpoint.

The trail is part of a larger, developing regional trail system called the [Rancocas Greenway](#), which will one day



**TrailLink**  
by Rails-to-Trails Conservancy

**TrailLink.com**



# Pemberton Rail-Trail

*New Jersey*

**States:** New Jersey

**Counties:** Burlington

Length: 1.6miles

**Trail end points:** Hanover Street (Pemberton)  
to Birmingham Road (Juliustown)

**Trail surfaces:** Crushed Stone

**Trail category:** Rail-Trail

**Trail activities:** Bike, Walking, Wheelchair  
Accessible, Cross Country Skiing

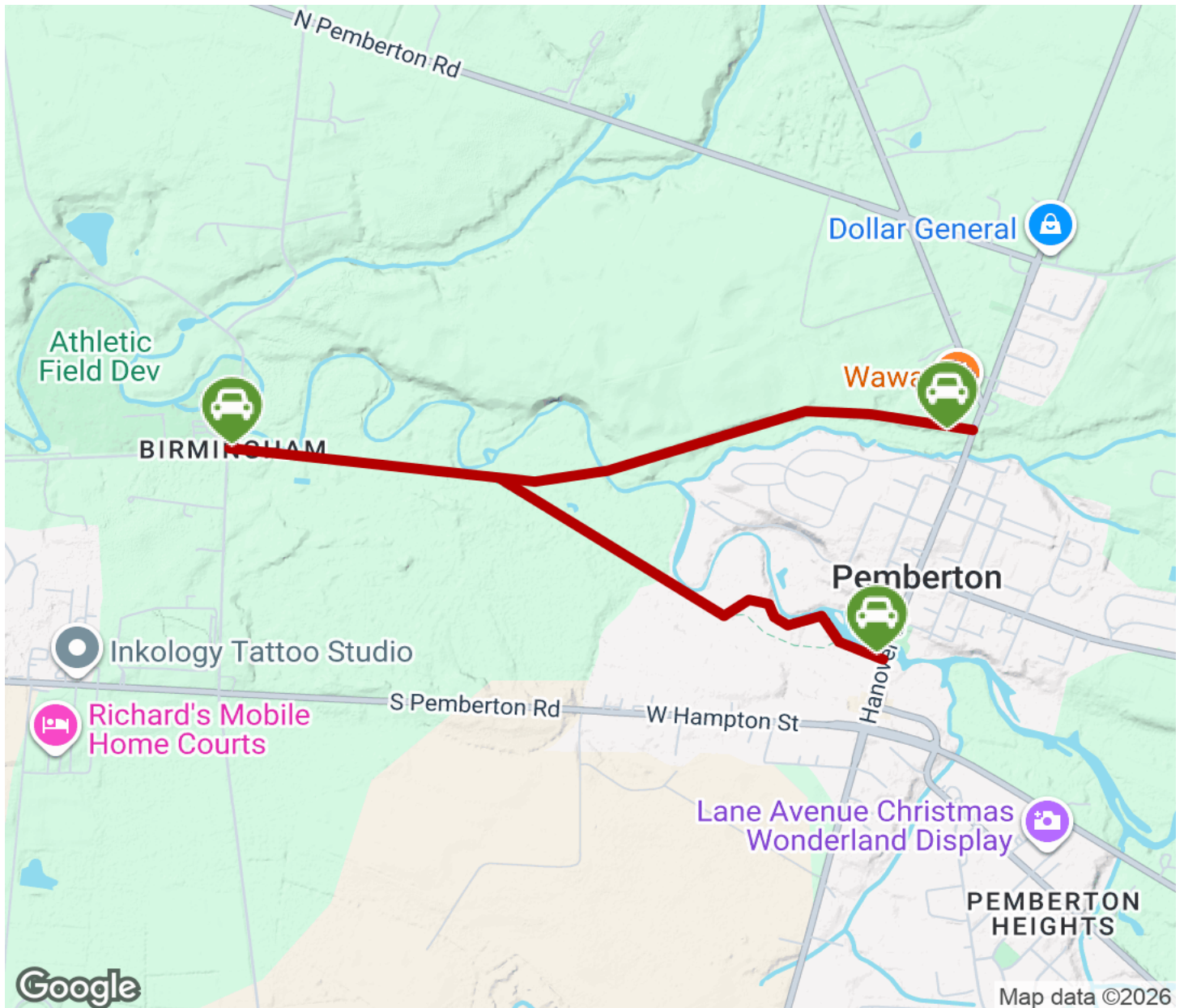
## Parking & Trail Access

From the north, take the NJ Turnpike to Route 206; then take County Route 530 East into South Pemberton. Take a left (north) onto Hanover Street. Follow this for about 0.5 miles and you'll see an old passenger station on the left. Park here where it is approved and safe.



# Pemberton Rail-Trail

New Jersey



Trailhead



Restroom



Parking



Water Fountain



Tunnel



**TrailLink**  
by Rails-to-Trails Conservancy

**TrailLink.com**