



2026

TrailLink Unlimited 

Guides



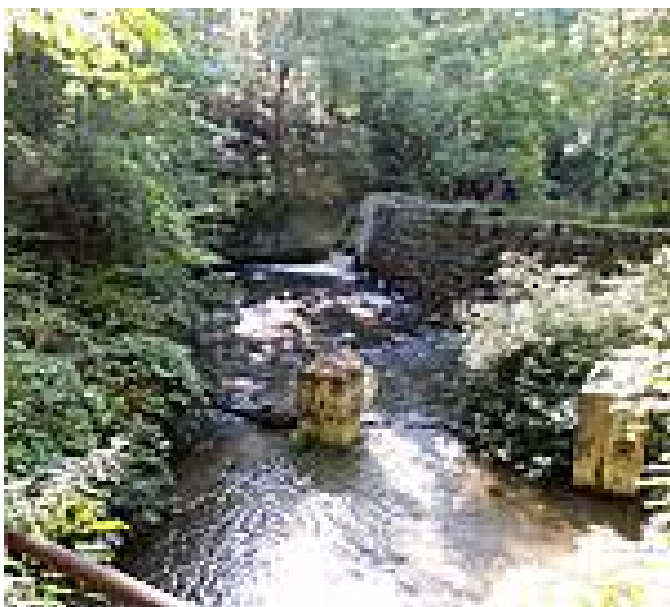
**Charlie Major  
Nature Trail**  
*New York*



## Charlie Major Nature Trail

New York

*The Charlie Major Nature Trail follows an abandoned right-of-way that once carried trains along the old Skaneateles Short Line*



Near the Crow Hill Road bridge on the Mottville end is a nice place to have a picnic along the creek. There is also a playground at the Mottville trailhead.

The Charlie Major Nature Trail follows an abandoned right-of-way that once carried trains along the old Skaneateles Short Line Railroad. The railroad served millworks in the area, including paper mills, grist mills, distilleries, and woodworking mills, which were powered by Skaneateles Creek.

### About the Route

The trail runs for just longer than 1 mile between Mill Road, just north of Old Seneca Turnpike and Crow Hill Road in Mottville. The pretty little trail crosses the creek via three wooden bridges and meanders through a forested corridor. Along the way, you'll see remains of the railroad, dams, and millworks buildings.



**TrailLink**  
by Rails-to-Trails Conservancy

**TrailLink.com**



# Charlie Major Nature Trail

*New York*

**States:** New York

**Counties:** Onondaga

Length: 1.2miles

**Trail end points:** Crow Hill Road (Mottville) to  
Mill Rd. (Skaneateles)

**Trail surfaces:** Cinder,Dirt

**Trail category:** Rail-Trail

**Trail activities:** Fishing,Mountain

Biking,Walking,Wheelchair Accessible,Cross  
Country Skiing

## Parking & Trail Access

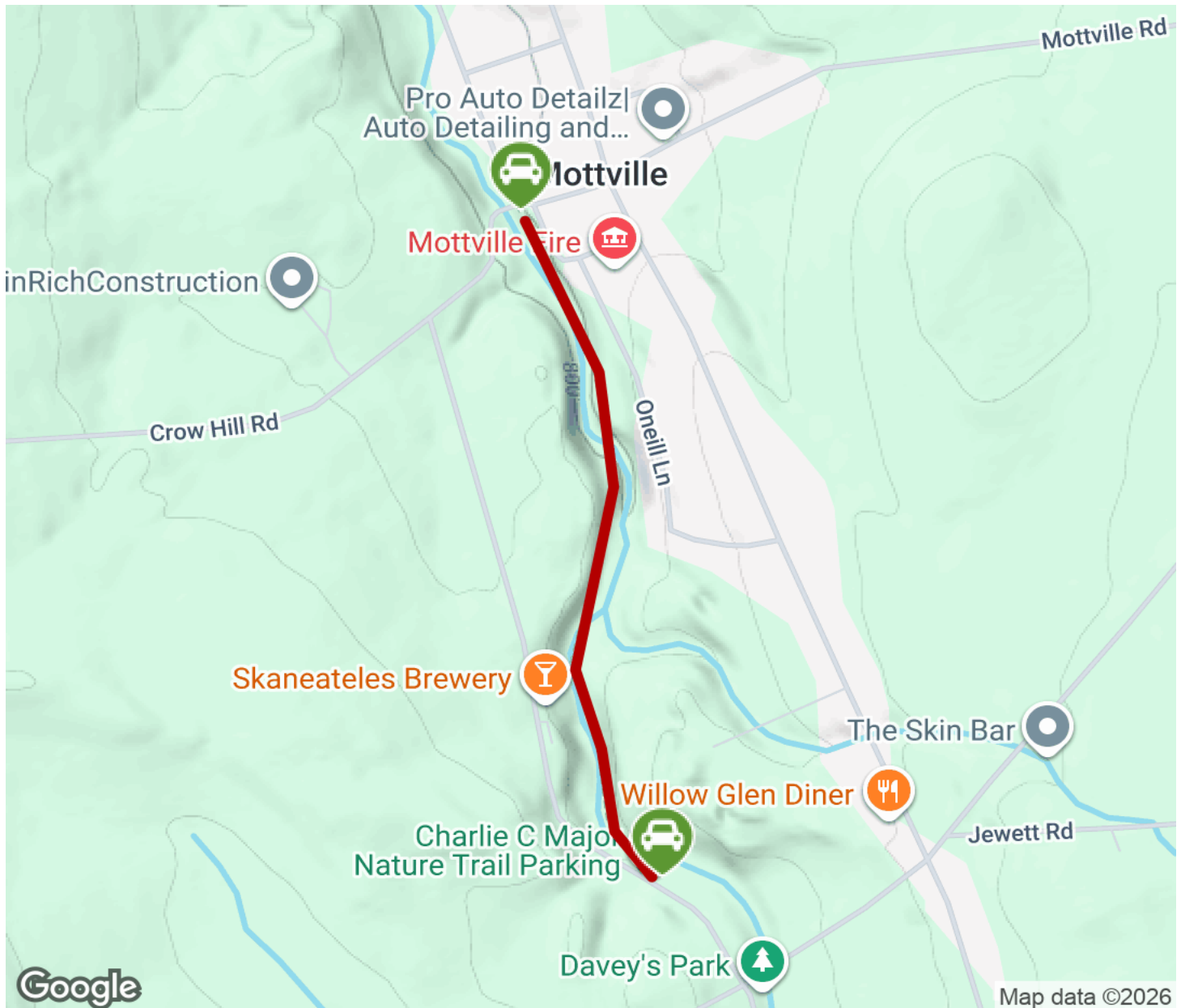
The Charlie Major Nature Trail runs between Crow Hill Road (Mottville) and Mill Rd. (Skaneateles), with parking available at both ends.

Please see TrailLink Map for detailed directions.



# Charlie Major Nature Trail

New York



Trailhead



Restroom



Parking



Water Fountain



Tunnel



**TrailLink**  
by Rails-to-Trails Conservancy

**TrailLink.com**