



2024

TrailLink Unlimited 

Guides



Nickel Plate Trail (OH)

Ohio



Nickel Plate Trail (OH)

Ohio

Ohio's Nickel Plate Trail runs for 2.5 miles from 5th Street near Ravenna Avenue (Metzger Park) to a point just south of



Ohio's Nickel Plate Trail runs for 2.5 miles from 5th Street near Ravenna Avenue (Metzger Park) to a point just south of Georgetown Road. The wooded corridor follows an old railroad right-of-way through suburban back yards, wetlands and cultivated fields. The trail also passes by Mary C. Metzger Park, which has additional biking and walking paths, as well as children's play area, picnic facilities and soccer fields.



Nickel Plate Trail (OH)

Ohio

States: Ohio

Counties: Stark

Length: 2.5miles

Trail end points: 5th St. at Ravenna Ave. to
South of Georgetown Road (Louisville)

Trail surfaces: Asphalt, Crushed Stone

Trail category: Rail-Trail

Trail activities: Bike, Inline

Skating, Wheelchair Accessible, Mountain

Biking, Walking, Cross Country Skiing

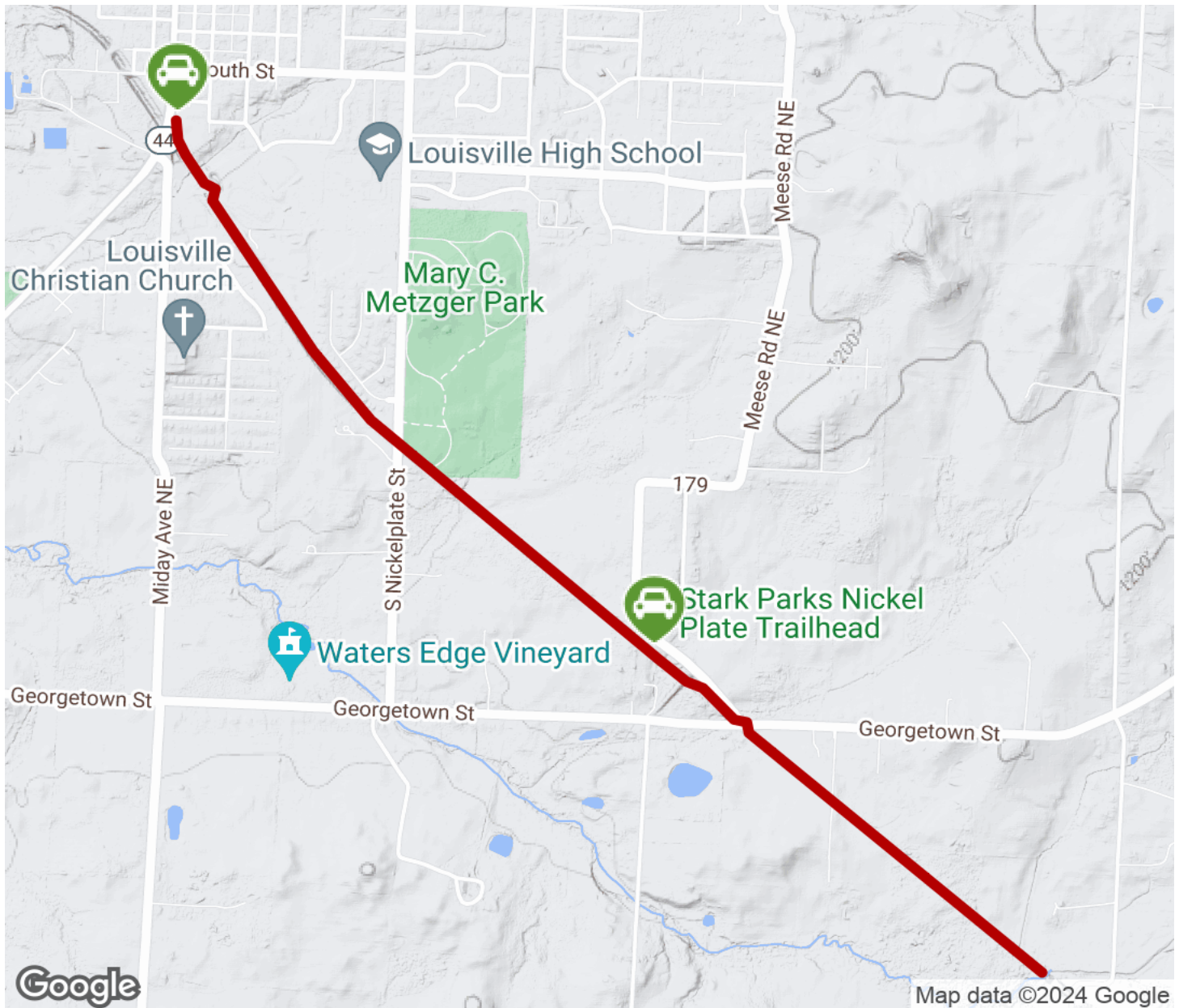
Parking & Trail Access

Toward the southern end, park at the end of McKimm Avenue where it meets Pinevale Ave. At the north end, park at Metzger Park (5th St. at Ravenna Ave.). You can also access the trail from Louisville Middle School.



Nickel Plate Trail (OH)

Ohio



Trailhead



Restroom



Parking



Water Fountain



Tunnel



TrailLink
by Rails-to-Trails Conservancy

TrailLink.com