



2025

TrailLink Unlimited 

Guides   



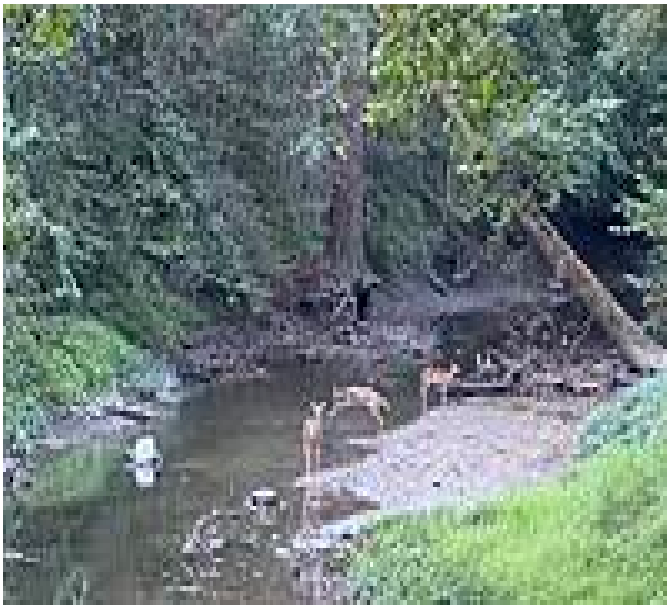
**University/  
Parks Trail**  
*Ohio*



## University/Parks Trail

Ohio

*The University/Parks Trail is a wide, paved trail that extends from Toledo into its western suburbs along a former railroad corridor.*



The University/Parks Trail is a wide, paved trail that extends from Toledo into its western suburbs along a former railroad corridor. More than half the trail also parallels an active freight line.

Despite its suburban setting, the trail runs primarily through a wooded corridor with the occasional meadow or wetlands along the way. In the east, the trail provides convenient access to the University of Toledo, while a spur trail north of Central Avenue leads to Wildwood Preserve Metropark in Sylvania. True to its name, the park is home to a wide variety of plant and animal life.



# University/Parks Trail

Ohio

**States:** Ohio

**Counties:** Lucas

Length: 6.3miles

**Trail end points:** King Rd. between Sylvania Ave. and Central Ave. (Sylvania) to University of Toledo at E. Rocket Dr. (Toledo)

**Trail surfaces:** Asphalt

**Trail category:** Rail-Trail

**Trail activities:** Bike,Inline

Skating,Walking,Wheelchair Accessible,Cross Country Skiing

## Parking & Trail Access

Parking for the University/Parks Trail is available at: Tam-O-Shanter, McCord Road, Wildwood Preserve Metropark, Ottawa Hills Municipal Building, the University of Toledo Southwest Academic Center and Ottawa Park.



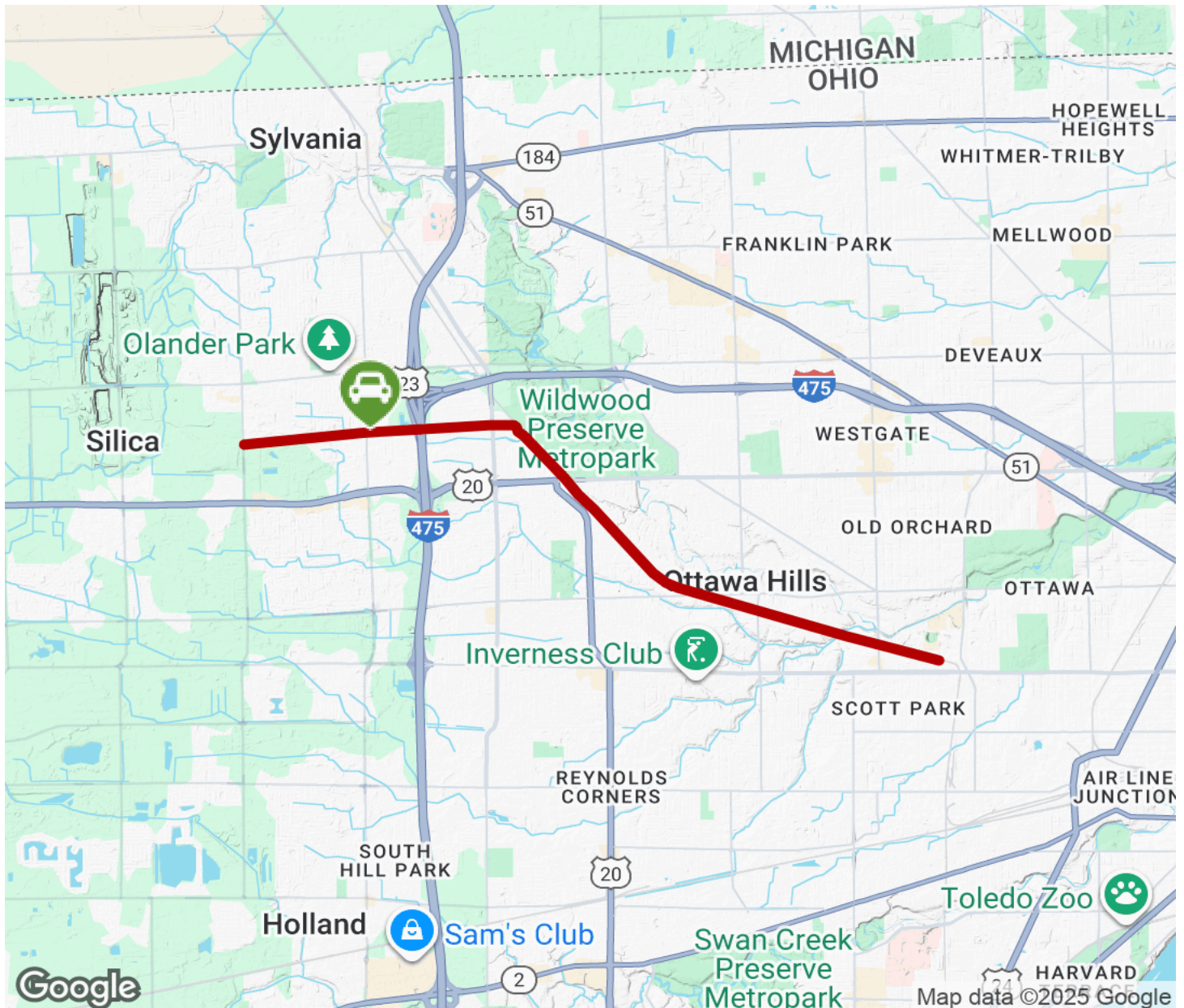
**TrailLink**  
by Rails-to-Trails Conservancy

**TrailLink.com**



# University/Parks Trail

Ohio



Trailhead



Restroom



Parking



Water Fountain



Tunnel



**TrailLink**  
by Rails-to-Trails Conservancy

**TrailLink.com**