



2025

TrailLink Unlimited 

Guides   



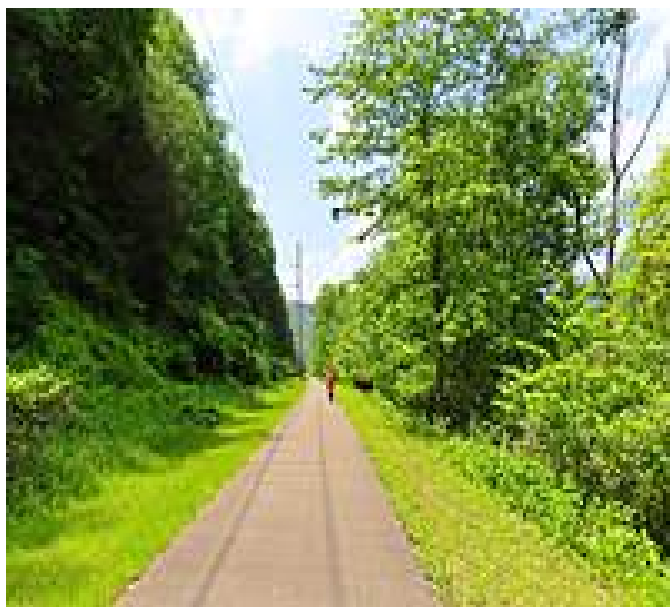
**Allegheny
River Trail**
Pennsylvania



Allegheny River Trail

Pennsylvania

The Allegheny River Trail runs on asphalt between Franklin and Emlenton for 27.5 miles and on an isolated section



The Allegheny River Trail runs on asphalt between Franklin and Emlenton for 27.5 miles and on an isolated section between Foxburg and Parker for 2.5 miles.

About the Route

Keep your eyes open for wildlife when you visit the Allegheny River Trail. This segment of the Allegheny River—once a canoe route for local tribes and French trappers—was designated a national wild and scenic river, and the forests teem with animals. Everything from chipmunks to wild turkeys to deer are frequently spotted along the trail, while eagles rule the sky overhead.

Starting at the trail's northern endpoint, just south of the US 322 bridge, the trail heads south past a couple

of riverfront camping sites in the first 4 miles. At 5.2 miles, the trail crosses East Sandy Creek. Here, trail users can catch sight of the picturesque Belmar Bridge that carries the Sandy Creek Trail across the Allegheny River. Trail users have the option to either pass beneath the bridge that soars 80 feet overhead, or you can ascend using a stairway.

In East Sandy, the trail passes through two old railroad tunnels.

About 3.2 miles past the bridge, trail users can spot Indian God Rock, a large boulder at the water's edge with numerous inscriptions, including Indigenous petroglyphs, carved in the soft sandstone. A viewing platform offers a nice panorama, though vandals have destroyed most of the figures on the rock.

Four miles past the viewing platform, the trail veers onto gravelly North Kent Road for 0.75 mile through the Sunny Slopes community. Back on the asphalt trail, the trail dips underground and passes through the 3,300-foot-long Kennerdell Tunnel and, in another 6 miles, the Rockland Tunnel (2,868 feet long). Both of these tunnels have dog legs and are dark, so trail users will need a flashlight to navigate.

Emerging from the second tunnel, the trail shortly arrives in Emlenton in 6 miles, the end of this section of trail. The small town is a great place to grab a bite and soak in the local history at the Pumping Jack Museum with its collection of oil-drilling relics.

A 4.5-mile trail gap exists between Emlenton and Foxburg. The trail resumes downstream in Foxburg, a tourist destination known for its riverfront dining, wine cellars, and historical RiverStone Estate located just uphill from the trail 1 mile south of town. 0.5 miles south of Foxburg, the trail crosses the Clarion River and reaches its southernmost terminus at the PA 368 bridge to Parker.



Allegheny River Trail

Pennsylvania

States: Pennsylvania

Counties: Clarion, Venango

Length: 29.6 miles

Trail end points: 4514 US-322 (Franklin) to
Perryville Rd. at Parker Bridge (Parker)

Trail surfaces: Asphalt

Trail category: Rail-Trail

Trail activities: Bike, Inline

Skating, Fishing, Wheelchair

Accessible, Horseback Riding, Walking, Cross
Country Skiing

Parking & Trail Access

The Allegheny River Trail runs between 4514 US-322 (Franklin) and Perryville Rd. at Parker Bridge (Parker), with parking available at either end.

Additional parking can be found at:

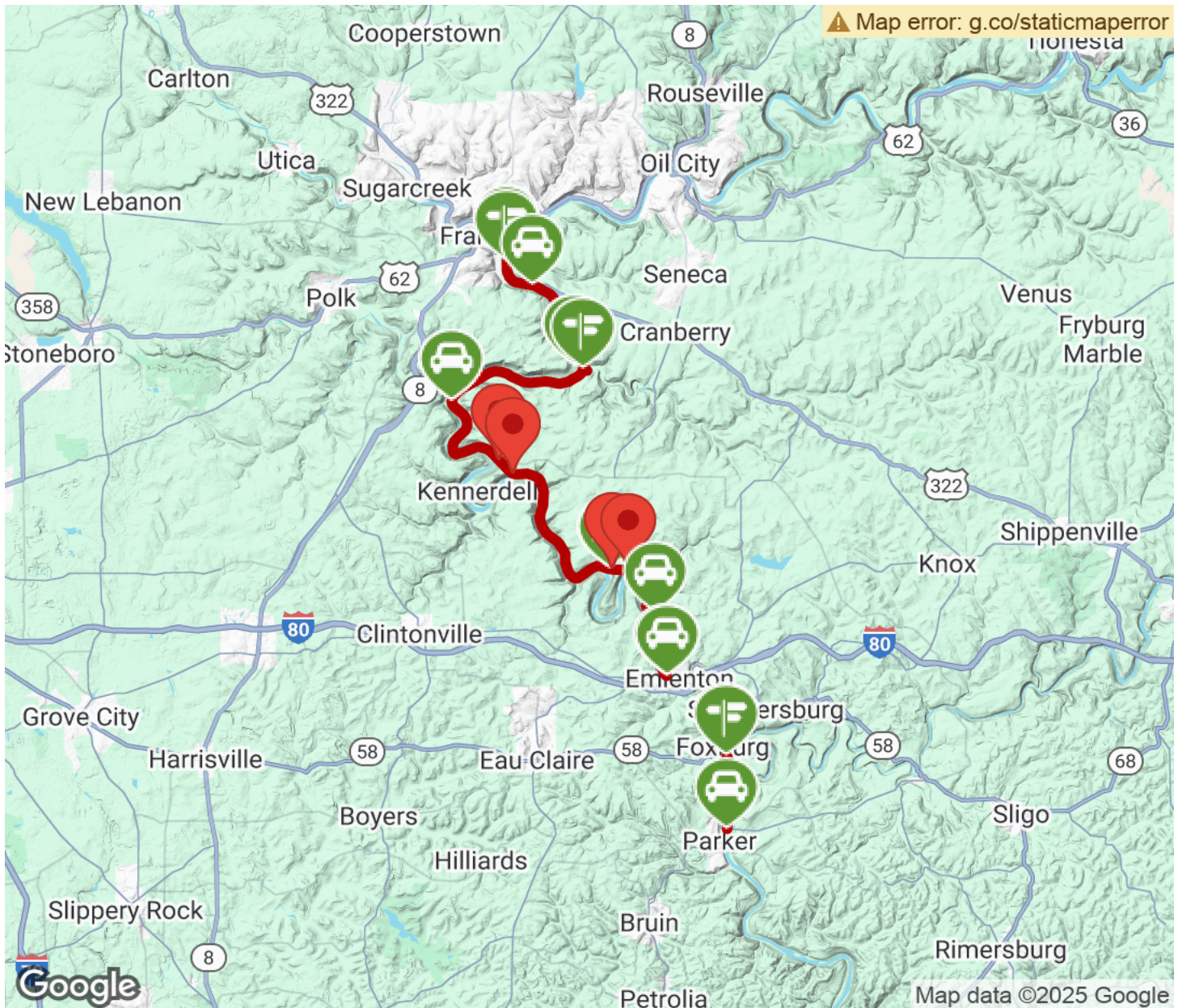
- 40 Main St (Foxburg)

See [TrailLink Map](#) for all parking options and detailed directions.



Allegheny River Trail

Pennsylvania



Trailhead



Restroom



Parking



Water Fountain



Tunnel



TrailLink
by Rails-to-Trails Conservancy

TrailLink.com