



2025

TrailLink Unlimited 

Guides



Allegheny National Forest - Deerlick XC Ski Trail

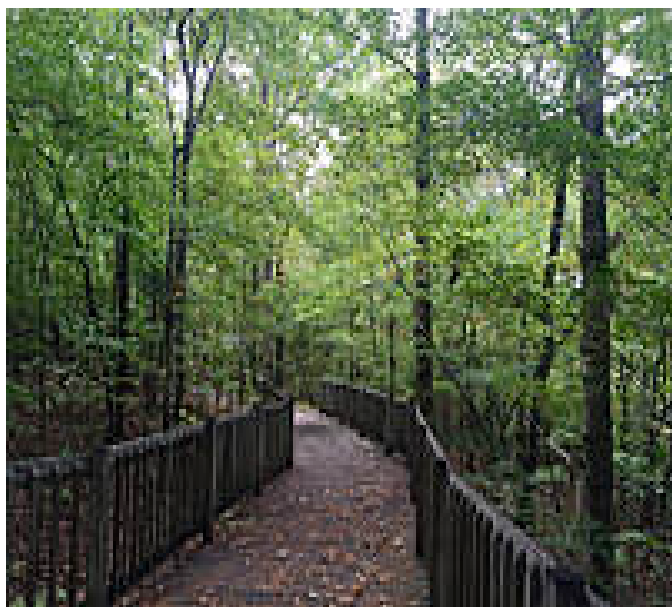
Pennsylvania



Allegheny National Forest - Deerlick XC Ski Trail

Pennsylvania

This trail is not groomed. The trail is a combination of logging roads, railroad grades and pipelines that offer challenges to a wide



This trail is not groomed. The trail is a combination of logging roads, railroad grades and pipelines that offer challenges to a wide range of skill levels. Trail is marked with blue diamonds.



Allegheny National Forest - Deerlick XC Ski Trail

Pennsylvania

States: Pennsylvania

Counties: Warren

Length: 9miles

Trail end points: Allegheny National Forest to
Allegheny National Forest

Trail surfaces: Ballast,Dirt,Grass,Gravel

Trail category: Rail-Trail

Trail activities: Fishing,Mountain
Biking,Walking,Cross Country Skiing

Parking & Trail Access

The trailhead is located at the end of Tollgate Road, which is just east of Sheffield on US Route 6.



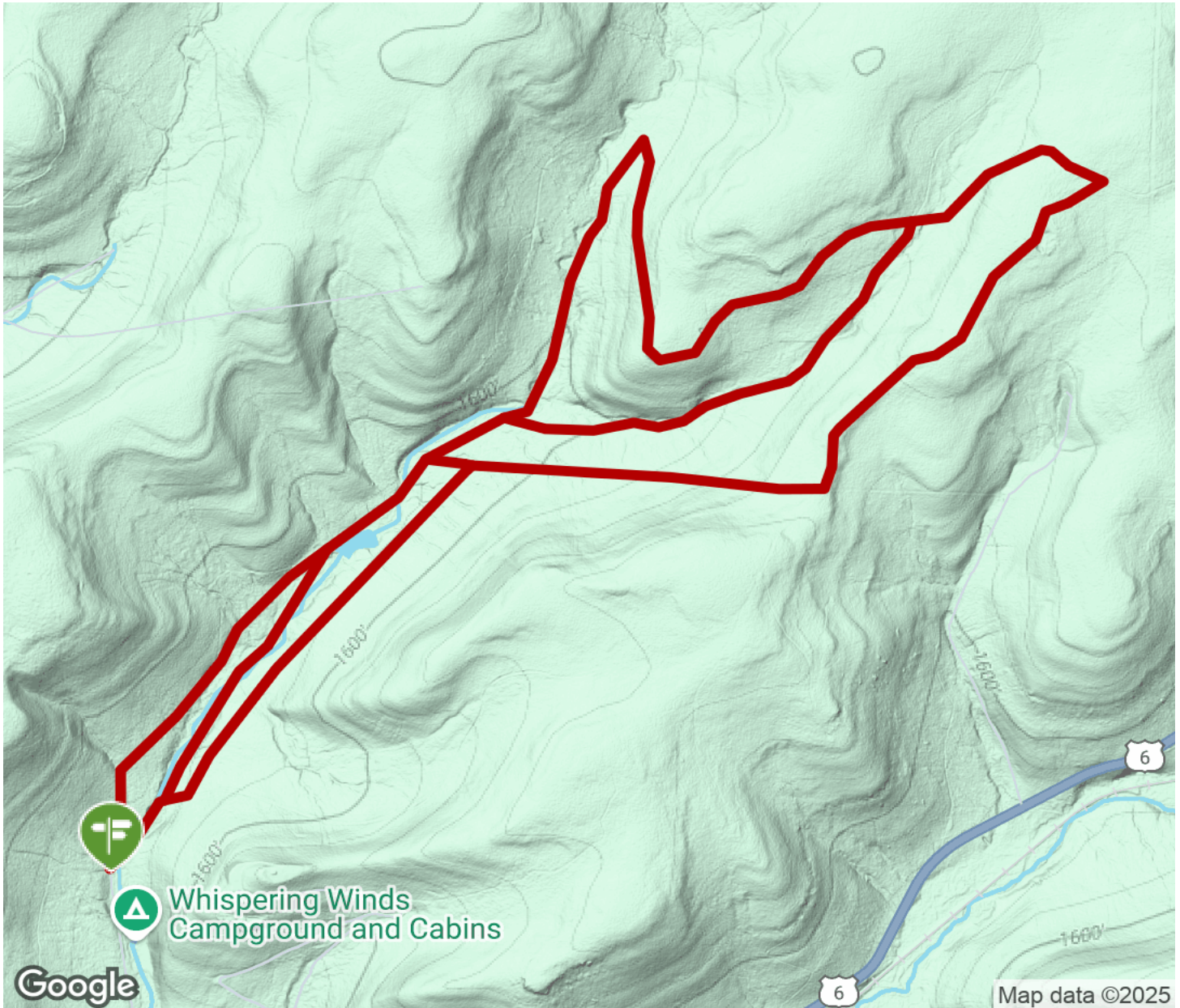
TrailLink
by Rails-to-Trails Conservancy

TrailLink.com



Allegheny National Forest - Deerlick XC Ski Trail

Pennsylvania



Trailhead



Restroom



Parking



Water Fountain



Tunnel



TrailLink
by Rails-to-Trails Conservancy

TrailLink.com