



2025

TrailLink Unlimited 

Guides



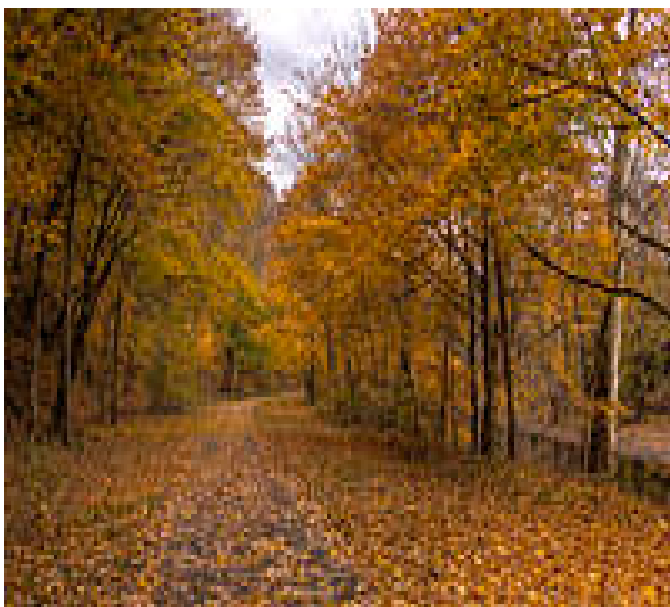
**Lower Trail**  
*Pennsylvania*



## Lower Trail

Pennsylvania

*Closure Notice: The Lower Trail is closed between mile markers 9 and 10 for a bridge repair. Completion date is unknown. The Lower*



Closure Notice: The Lower Trail is closed between mile markers 9 and 10 for a bridge repair. Completion date is unknown.

The Lower Trail runs between Alexandria and Williamsburg, tracing the meandering Frankstown Branch of the Juniata River. The trail, with a mostly crushed-stone surface, is a remote and woodsy path that goes for 11 miles without a road crossing during one trail segment.

### About the Route

The northern endpoint of the Lower Trail sits at the Alfarata Station trailhead near Alexandria, the trail follows the river upstream through a water gap at Tussey

Mountain. Just 0.8 miles from the trailhead, a short turnoff on the right leads to a diner with soft-serve ice cream.

About 3 miles from the trailhead, the trail passes dam abutments left behind from the canal. The first bridge, 4.3 miles from the trailhead, is a stone-arch bridge across Fox Run. Then, in 0.5 miles, the route crosses the river twice on bridges the railroad built to avoid a river bend.

After the second bridge, the trail comes to the Mount Etna Furnace trailhead, named for a pig iron furnace that predates the canal. The ironmaster's residence still stands as a burned-out mansion here.

Continuing 2.6 miles, the trail passes through the remains of Carlisle, an old limestone-mining town near the Cove Dale trailhead. The surface improves to asphalt here for the next 3.5 miles through Williamsburg, where trail users can catch a bite at a general store or diner. The trail crosses Juniata River Road a little less than 2 miles past Williamsburg and ends 3.5 miles later.

Deer, rabbits, squirrels, turtles, black bears, turkeys, bobcats, and more inhabit the surrounding woods, and the Audubon Society recommends the area to birders for its variety of feathered inhabitants.

From Flowing Springs Road, continue 1,500 feet on a shared on-road section (with bike lanes on either side) heading over the Frankstown Branch of the Juniata River. The route then curves left onto a new segment of off-road trail (formerly T444), paralleling US 22 for a short period before looping left and then under US 22 to Beaver Dam Road and Canoe Creek State Park, the trail's southern endpoint. The park hosts many recreational activities as it's home to Canoe Creek Lake and historic sites like the small white church on Tukey Valley Road. A conservation group bought the church, built in the 1800s, to protect thousands of brown bats that roost in the church.



## Lower Trail

Pennsylvania

**States:** Pennsylvania

**Counties:** Blair, Huntingdon

Length: 17 miles

**Trail end points:** SR 4014 and Brick Yard Road (Alexandria) to Beaver Dam Road and Flowing Springs Road (Williamsburg)

**Trail surfaces:** Asphalt, Crushed Stone

**Trail category:** Rail-Trail

**Trail activities:** Horseback Riding, Mountain Biking, Walking, Wheelchair Accessible, Cross Country Skiing

## Parking & Trail Access

The Lower Trail runs between SR 4014 and Brick Yard Road (Alexandria) and Beaver Dam Road and Flowing Springs Road (Williamsburg), with parking available near both endpoints.

Parking is also available at:

- Lower Piney Creek Rd (Williamsburg)
- The Lower Trail Mount Etna Station (Alexandria)
- 200 E 1st St (Williamsburg)

Please see the [TrailLink Map](#) for all parking options and detailed directions.



**TrailLink**  
by Rails-to-Trails Conservancy

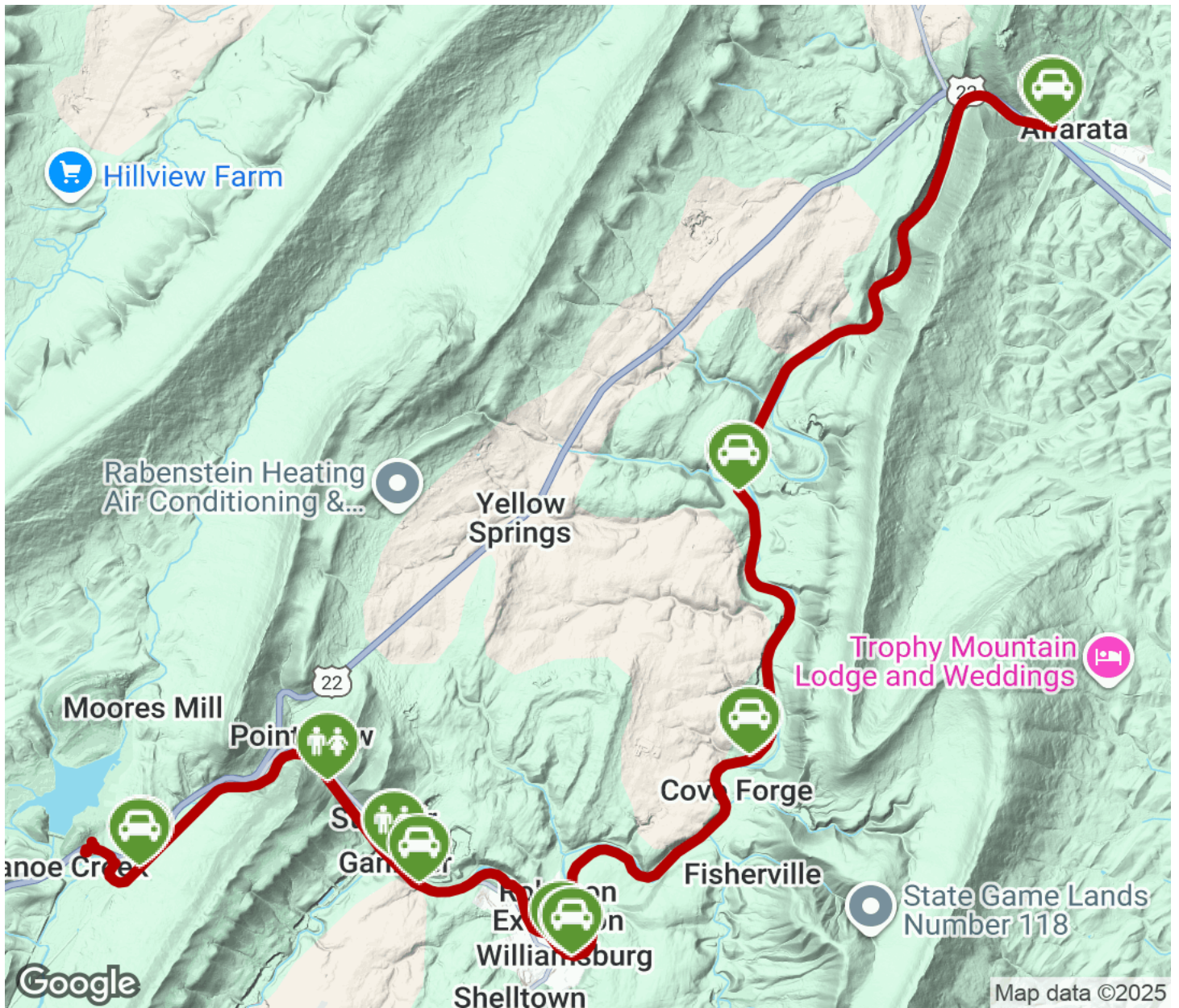
**TrailLink.com**





# Lower Trail

Pennsylvania



- Trailhead
- Restroom
- Parking
- Water Fountain
- Tunnel