



2026

TrailLink Unlimited 

Guides



Phenix-Harris Riverwalk

Rhode Island



Phenix-Harris Riverwalk

Rhode Island

The Phenix-Harris Riverwalk, a short trail built on a former rail bed purchased from Penn Central Railroad, connects West



The Phenix-Harris Riverwalk, a short trail built on a former rail bed purchased from Penn Central Railroad, connects West Warwick and Coventry, two towns on the outskirts of Providence. The dirt pathway offers a peaceful and wooded oasis between the Pawtuxet River and residential neighborhoods. Future plans include a connection to the [Arkwright Riverwalk](#), just over a mile away.



Phenix-Harris Riverwalk

Rhode Island

States: Rhode Island

Counties: Kent

Length: 0.3miles

Trail end points: Fairview Ave., West Warwick
to Lincoln Ave., Coventry

Trail surfaces: Dirt

Trail category: Rail-Trail

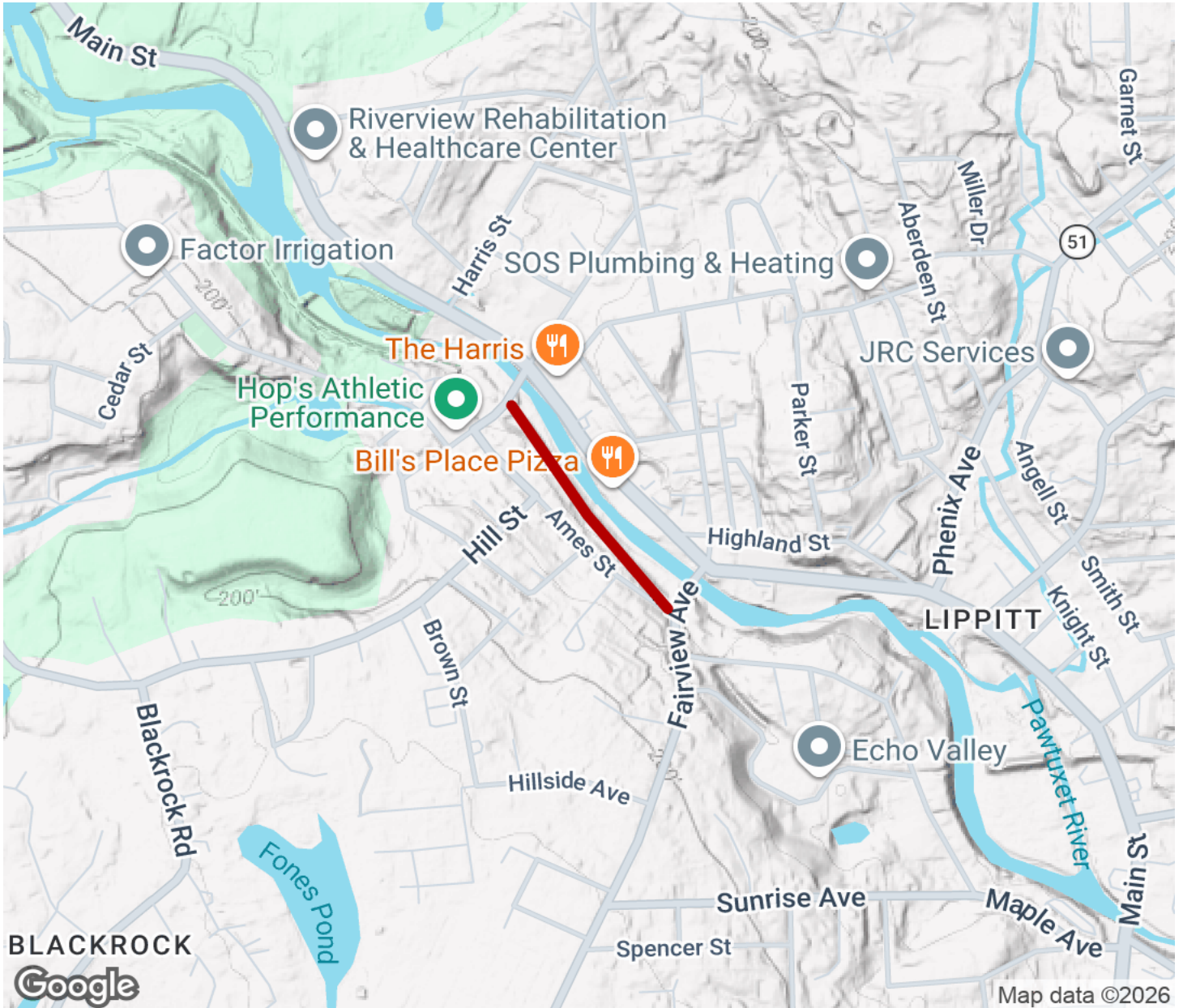
Trail activities: Bike, Fishing, Mountain
Biking, Walking, Wheelchair Accessible, Cross
Country Skiing

Parking & Trail Access



Phenix-Harris Riverwalk

Rhode Island



Trailhead



Restroom



Parking



Water Fountain



Tunnel



TrailLink
by Rails-to-Trails Conservancy

[TrailLink.com](https://www.TrailLink.com)