



2025

TrailLink Unlimited 

Guides



**North Augusta
Greenway**
South Carolina



North Augusta Greenway

South Carolina

Following the former right-of-way of the Central of Georgia Railway, the paved North Augusta Greenway meanders 9 miles



Following the former right-of-way of the Central of Georgia Railway, the paved North Augusta Greenway meanders 9 miles through the riverfront community of North Augusta and is touted as the city's most popular recreational activity. Known to locals as simply the Greenway, the rail trail is named for the late Thomas W. Greene, former mayor, and trail champion.

Despite the dense suburban setting, the trail's careful design transports users into a surprisingly quiet natural environment. Buffering much of the route is a 100-foot-wide, wooded corridor that provides a significant amount of shade, as well as a habitat for native birds, deer, and other wildlife. Trees hide the more developed surroundings along the trail, while new bridges and culvert tunnels whisk users beneath and over busy road

crossings. Such conscientious environmental planning helped the trail earn its designation as a National Recreation Trail.

About the Route

Leaving off from the southern endpoint at The River Golf Club on the Savannah River, the trail heads 0.6 miles west from the clubhouse to Riverside Boulevard, where trail users can find a preserved segment of railroad track and a parking lot for the trail. From here, the route heads 0.5 miles northeast to SC 125/ East Buena Vista Avenue, where this segment ends.

Back at the parking lot at Riverside Boulevard, head right (west) into a tunnel beneath US 25 Business/Georgia Avenue. After the tunnel, trail users can either continue straight for a shorter trip or, for views of the Savannah River, turn left (south) onto a 1.6-mile extension known as Hammond's Ferry Loop. In 0.1 mile, the loop passes through Brick Pond Park, a 40-acre nature conservation area. In another 0.7 miles, the trail reaches Boeckh Park, which includes a pavilion and floating dock. The trail turns northeast, away from the river, following Crystal Creek through the woods and over a 90-foot flatbed railcar serving as a bridge before rejoining the main path just west of Crystal Lake Drive.

From this trail juncture at the end of the Hammond's Ferry Loop, turn left and continue 0.7 miles northwest to the Riverview Park Activities Center and the Riverview Park Trailhead, where a fishing pier on the Savannah River is just a short walk away. From here, the next 4.5 miles will take trail users under River Bluff Drive via the tunnel, over SC 230/ West Martintown Road via a pedestrian bridge, and across busy Pisgah Road via a signalized crossing. Note that the trail's uphill grade heading north is gradual yet noticeable. The northern terminus, at Mayfield Drive, is 0.5 miles north of the last parking area at Bergen Road, just north of I-20.



North Augusta Greenway

South Carolina

States: South Carolina

Counties: Aiken

Length: 9miles

Trail end points: 307 Riverside Blvd (North Augusta) to 2117 Warren Ct (North Augusta)

Trail surfaces: Asphalt

Trail category: Rail-Trail

Trail activities: Bike,Inline
Skating,Fishing,Wheelchair
Accessible,Walking

Parking & Trail Access

The North Augusta Greenway runs between 307 Riverside Blvd (North Augusta) and 2117 Warren Ct (North Augusta).

Parking is available at:

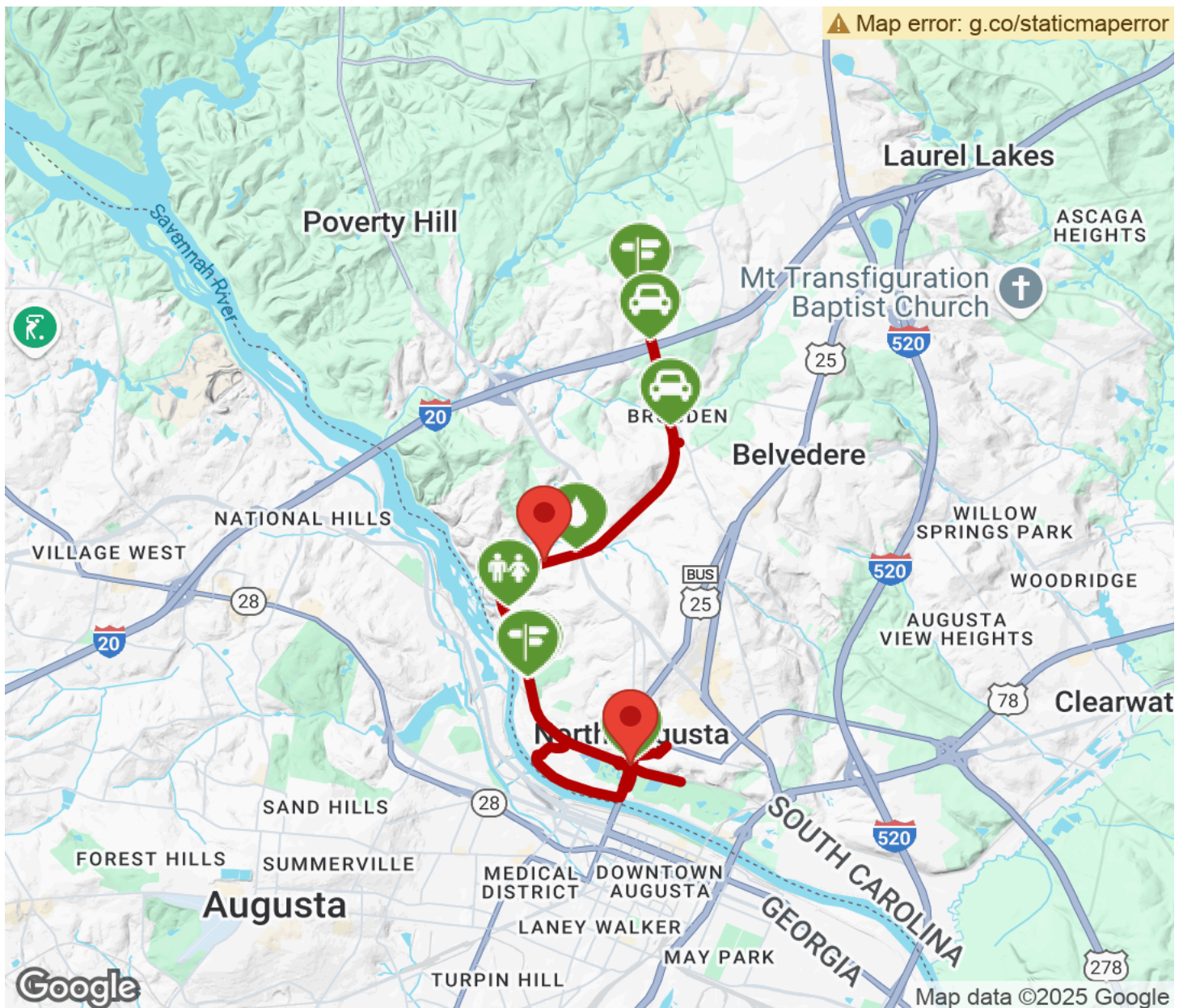
- 306 Riverside Blvd (North Augusta)
- 100 Riverview Park Dr (North Augusta)
- 2029 Pisgah Rd (North Augusta)

See [TrailLink Map](#) for all parking options and detailed directions.



North Augusta Greenway

South Carolina



Trailhead



Restroom



Parking



Water Fountain



Tunnel



TrailLink
by Rails-to-Trails Conservancy

TrailLink.com