



2025

TrailLink Unlimited 

Guides



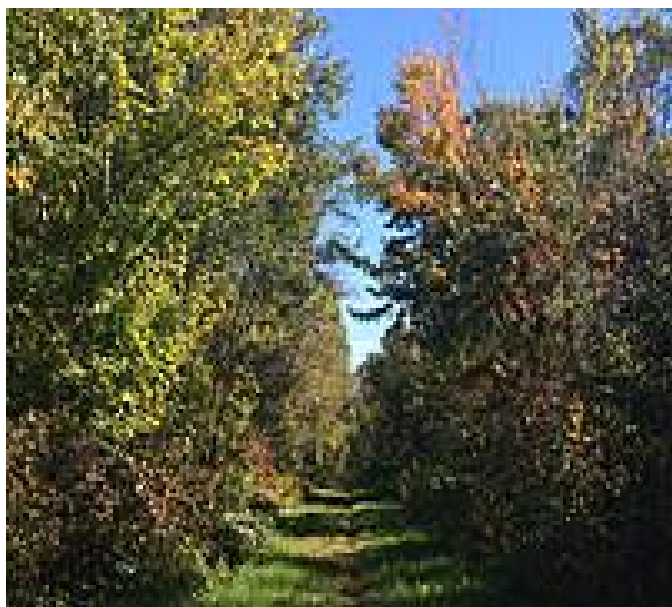
**Tuscobia State
Trail**
Wisconsin



Tuscobia State Trail

Wisconsin

From Rice Lake to Park Falls, the Tuscobia State Trail travels 74 miles through the Flambeau State Forest and Chequamegon



The western tip of the Tuscobia State Trail—from the community of Tuscobia, just north of Rice Lake, to the Village of Birchwood—also overlaps the Ice Age Trail, a 1,200-mile hiking trail across Wisconsin.

From Rice Lake to Park Falls, the Tuscobia State Trail travels 74 miles through the Flambeau State Forest and Chequamegon National Forest in northern Wisconsin. Enjoy the rugged wilderness of the Blue Hills from a nearly-level former rail grade. Trail users can hike, mountain bike, snowmobile, use ATVs and visit quaint shops in small villages along the trail.

About midway along the trail in the village of Winter, is the restored Winter Railroad Depot. The Depot serves as a trailhead, Visitor Welcome Center, Historical Museum, and offices for Friends of the Tuscobia Trail, a 501c3 nonprofit that cares for the trail. The building, dating back to 1905, is adjacent to what was once the Chicago, St. Paul, Minneapolis & Omaha Railway line on which the trail now travels.



TrailLink
by Rails-to-Trails Conservancy

TrailLink.com



Tuscobia State Trail

Wisconsin

States: Wisconsin

Counties: Barron, Price, Sawyer, Washburn

Length: 74 miles

Trail end points: 9th Ave. at 7th Ave. (Park Falls) to Co Hwy SS (Rice Lake)

Trail surfaces: Crushed Stone, Dirt, Grass

Trail category: Rail-Trail

Trail activities: ATV, Fishing, Horseback Riding, Mountain

Biking, Snowmobiling, Walking, Cross Country

Skiing

Parking & Trail Access

Parking is available at either end of the trail in Rice Lake (west end) and Park Falls (east end). The Park Falls trailhead is located at 15400 Park Lane; restrooms and a picnic area are also available here.



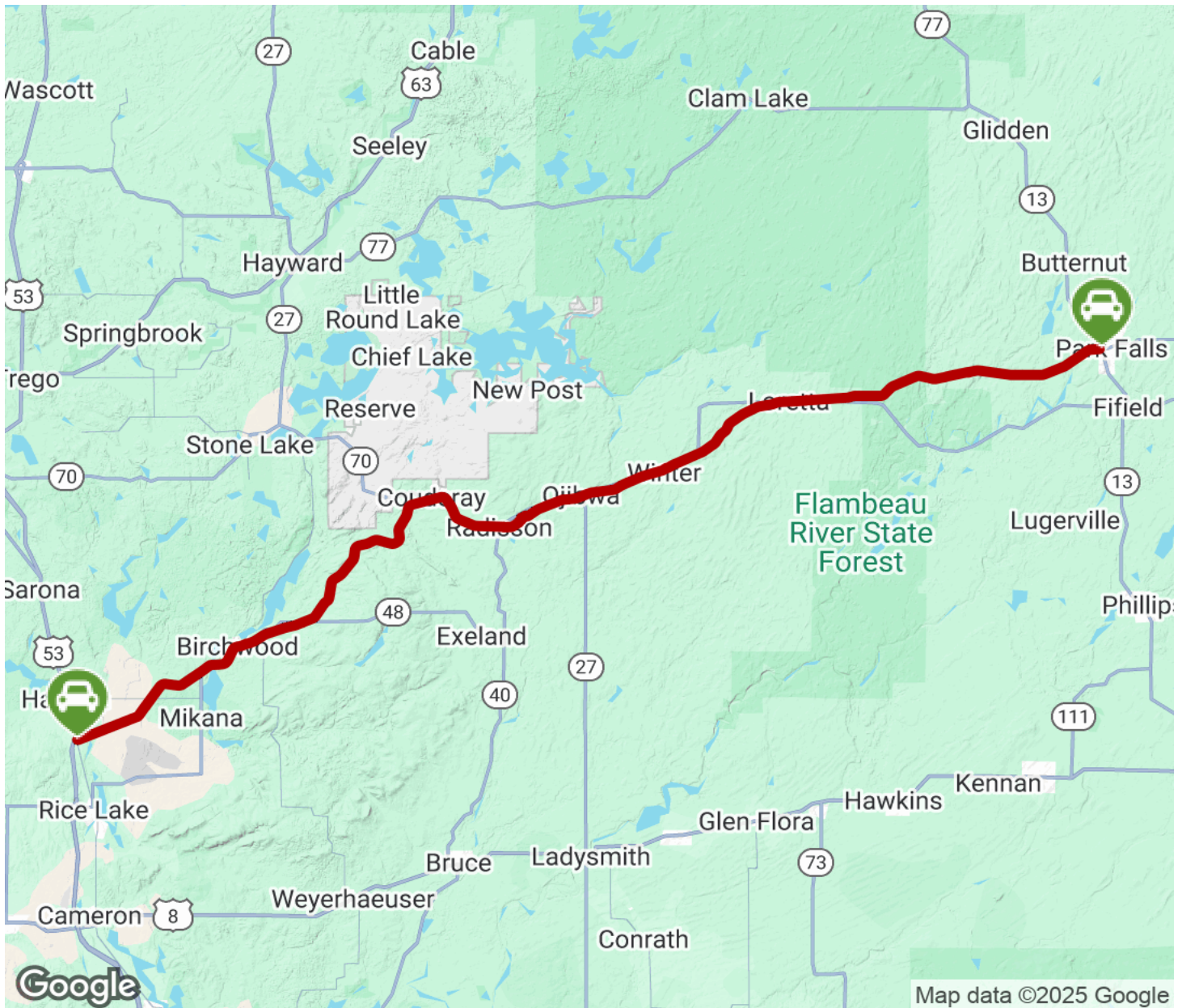
TrailLink
by Rails-to-Trails Conservancy

TrailLink.com



Tuscobia State Trail

Wisconsin



Trailhead



Restroom



Parking



Water Fountain



Tunnel



TrailLink
by Rails-to-Trails Conservancy

TrailLink.com