



2025

TrailLink Unlimited 

Guides



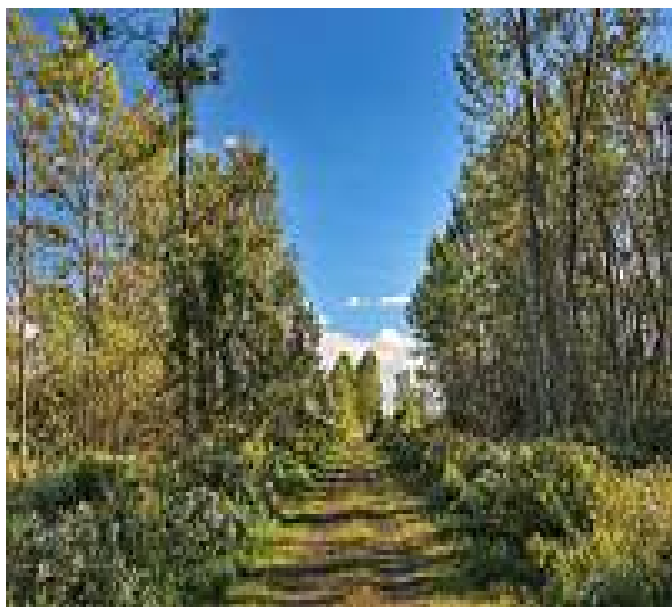
**Ahnapee State  
Park Trail**  
*Wisconsin*



## Ahnapee State Park Trail

Wisconsin

*The Ahnapee State Trail in northeast Wisconsin provides a scenic nearly 52-mile journey between Sturgeon Bay and Kewaunee,*



The Ahnapee State Trail in northeast Wisconsin provides a scenic nearly 52-mile journey between Sturgeon Bay and Kewaunee, featuring a tour of water bodies along the Door Peninsula.

The trail also overlaps with two sections of the Ice Age National Scenic Trail (totaling about 17 miles): from Kewaunee to just shy of Luxemburg, and from Algoma on the shores of Lake Michigan to Sturgeon Bay. The Ice Age Trail is a 1,200-mile hiking route across the state and a National Scenic Trail.

### About the Route

Trail users can start their journey at the northernmost trail endpoint in Sturgeon Bay, home to a variety of

restaurants and cafés. The northernmost 11.5 miles to the town of Forestville traverse agricultural fields and forested areas. At Forestville Dam County Park, trail users will have access to parking, restrooms, and the first views of the Ahnapee River through the trees to the west. The trail follows the Ahnapee River south another 6.1 miles to the town of Algoma, where the river flows into Lake Michigan.

Trail users should note that south of Leeward St., there is another spur trail that leads north across the Bayview Bridge which leads to a secondary northern endpoint on the other side of Sturgeon Bay. The main route continues south.

The route detours briefly in Algoma to Navarino Street, where, to continue south, trail users must take several blocks on-road to the lakefront. Crescent Beach and its attractive boardwalk are located just farther south, along Lake Street. To bypass Algoma, make a sharp right turn to stay on the trail, just past Birch Street.

About 10.5 miles south of Algoma, just beyond Casco, trail users can detour west to the town of Luxemburg or head east along the Kewaunee River, which playfully disappears and reappears along the remaining 12.3 miles of trail. This segment of the trail features fields of sunflowers and apple orchards that sometimes shed their bounty on the trail (a favorite of horses).

Bruemmer Park, located just outside of Kewaunee, offers shady spots to rest and a small zoo, which is open from 7 a.m. to sunset year-round and offers free admission. As you reach the southern end of the trail, it curves north and splits, with one prong leading to Main Street, just above two marinas, and the other leading to the trail's southern terminus where the Kewaunee River empties into Lake Michigan.

Here, a nearby old train depot has been converted into a public pavilion with parking. Explore the old clock tower on the depot for a piece of history or enjoy the lake and the



# Ahnapee State Park Trail

Wisconsin

**States:** Wisconsin

**Counties:** Door, Kewaunee

Length: 51.8 miles

**Trail end points:** S Lansing Ave & Green Bay Rd (Sturgeon Bay) to Miller St & Milwaukee St (Kewaunee)

**Trail surfaces:** Asphalt, Crushed Stone

**Trail category:** Rail-Trail

**Trail activities:** Fishing, Horseback

Riding, Mountain

Biking, Snowmobiling, Walking, Cross Country

## Parking & Trail Access

The Ahnapee State Park Trail runs between S Lansing Ave & Green Bay Rd (Sturgeon Bay) and Miller St & Milwaukee St (Kewaunee), with parking at either end.

Parking is also available at:

- Cherry Blossom Park, 919 S Lansing Ave. (Sturgeon Bay)
- N8290 Co Rd M (Algoma)
- Harold Reckelberg Park, E2344 Sunset Rd (Luxemburg)

Please see [TrailLink Map](#) for all parking options and detailed directions.



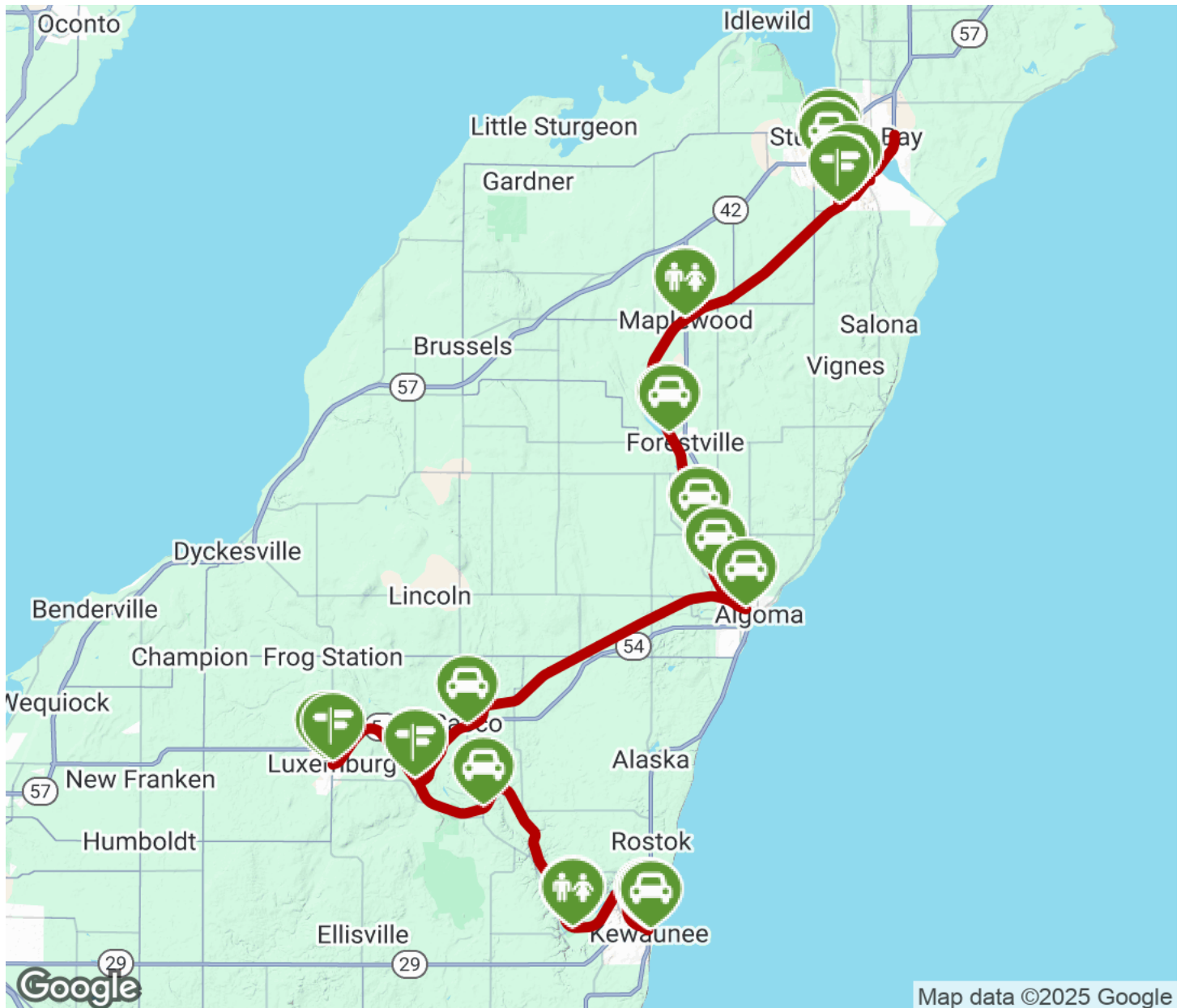
**TrailLink**  
by Rails-to-Trails Conservancy

**TrailLink.com**



# Ahnapee State Park Trail

Wisconsin



Trailhead



Restroom



Parking



Water Fountain



Tunnel



**TrailLink**  
by Rails-to-Trails Conservancy

**TrailLink.com**