



2026

TrailLink Unlimited 

Guides



**Possession
Camp Trail**
West Virginia



Possession Camp Trail

West Virginia

The Monongahela National Forest's Otter Creek Wilderness has many trails, mostly for hiking through the scenic landscape of



Like all of the trails in the Otter Creek Wilderness, attention has been given to keeping the Possession Camp Trail very primitive. There are no signs or blazes. However, confusing sections are marked with stone cairns. This rail-trail is not for the faint of heart, but it is worth the hike if you are up for a challenge.

The Monongahela National Forest's Otter Creek Wilderness has many trails, mostly for hiking through the scenic landscape of rhododendron, timber and mosses. Biking is prohibited on the trails, but horses are allowed in some areas.

The Possession Camp Trail extends northeast from a junction with the [Otter Creek Trail](#)—the spine of the trail system in the Otter Creek Wilderness—and the [Moore Run Trail](#). In the north, the trail ends at the scenic [Green Mountain Trail](#). So although the trail itself is roughly 3 miles long, there is some considerable hiking to get to the start of the trail. The trail can best be accessed by hiking in from the Moore Run Trailhead or either of the trailheads for the Otter Creek Trail.



Possession Camp Trail

West Virginia

States: West Virginia

Counties: Randolph, Tucker

Length: 3.2miles

Trail end points: Otter Creek Trail to Green Mountain Trail

Trail surfaces: Dirt

Trail category: Rail-Trail

Trail activities: Walking

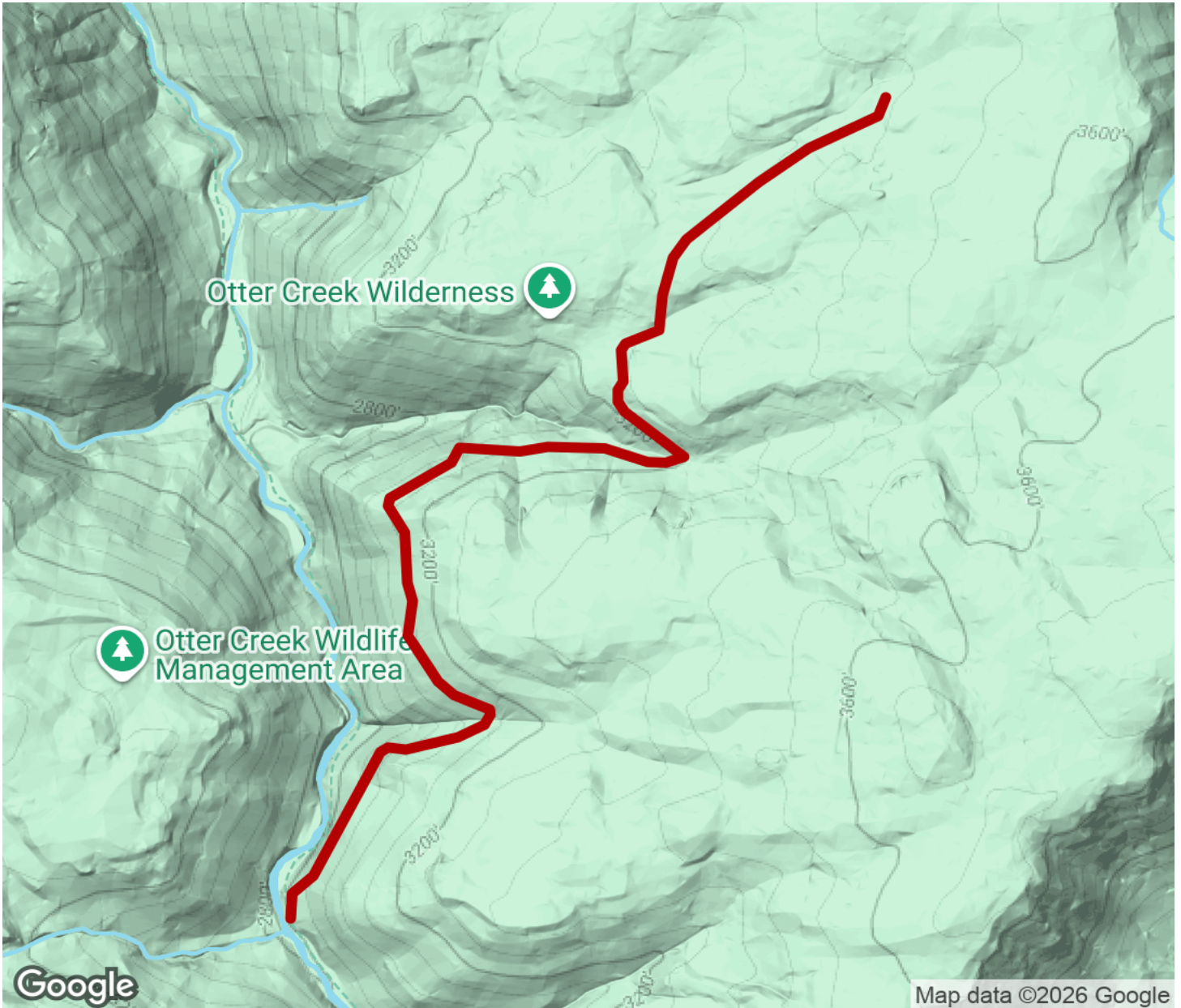
Parking & Trail Access

There is no parking available alongside the Possession Camp Trail.



Possession Camp Trail

West Virginia



Trailhead



Restroom



Parking



Water Fountain



Tunnel



TrailLink
by Rails-to-Trails Conservancy

TrailLink.com