



2026

TrailLink Unlimited



Guides



**Clarence  
Pathways**  
*New York*



## Clarence Pathways

New York

*Two former rival railroad corridors that crossed in Buffalo's eastern suburbs now form a 20.5-mile paved trail system called*



Two former rival railroad corridors that crossed in Buffalo's eastern suburbs now form a 20.5-mile paved trail system called Clarence Pathways in Clarence, Newstead, and Akron.

### About the Route

Five trails make up Clarence Pathways: West Shore Trail/Newstead-Akron Bike Path, Peanut Line Trail, Waterford Trail, and Spaulding Green Trail. They connect suburban neighborhoods with parks, town centers, and local workplaces. In the winter, snowmobiling is allowed on two of these routes: the Peanut Line Trail between Goodrich Road and Salt Road, and the West Shore Trail/Newstead--Akron Bike Path between Salt Road in Clarence and Cedar Street in Akron. The longest stretch is known as the West

### Shore Trail/Newstead-Akron Bike Path.

Starting on the West Shore Trail on Wehrle Drive in Clarence, the trail passes through a forest to a crossing at Gunnville Road in 0.9 mile; this is the former site of a railroad station. For the next couple of miles, trees screen the trail from Clarence High School and a residential neighborhood before coming to Main Street Town Park. Here the trail passes the Clarence Historical Museum and the Goodrich-Landow Log Cabin, moved from Goodrich Road, where it was built in 1825. In another 1.3 miles, the trail name changes to Newstead-Akron Bike Path as it crosses Davison Road.

At a fork at Akron Junction in 2.5 miles, go left onto the Peanut Line Trail, which heads to the East Amherst boundary in 8.3 miles, or go right to remain on the Newstead-Akron Bike Path, which ends in Akron in 2.1 miles.

Heading right, the trail ends on Cedar Street, just a couple of blocks south of regional ice cream maker Perry's. Perry's doesn't offer tours, but products are served locally at a pastry shop on Akron's Main Street, located 0.2 mile south.

The left fork heads west on a rail corridor that once carried vacationers to Niagara Falls. The Peanut Line Trail passes through farmland for the first 2.2 miles and then reenters Clarence and continues through forest and farmland as it arrives at Memorial Park, 4 miles past the fork.

About 2 miles past the park, the paved trail on the left is the Waterford Trail, which passes through the Northwoods community. In 2.3 miles, the trail passes residential neighborhoods before arriving at the trail's northwest end in East Amherst, where there is a drive-in diner just to the north.

Disconnected from the other trails in the system, the Spaulding Green Trail links the Clarence Town Hall and public library on Goodrich Road to the Spaulding Green housing project, built around an old quarry.



# Clarence Pathways

New York

**States:** New York

**Counties:** Erie

Length: 20.5miles

**Trail end points:** Clarence Pathways (East Amherst) to Wehrle Dr (Clarence); Cedar St (Akron)

**Trail surfaces:** Asphalt

**Trail category:** Rail-Trail

**Trail activities:** Bike,Inline

Skating,Snowmobiling,Walking,Wheelchair

Accessible,Cross Country Skiing

## Parking & Trail Access

The Clarence Pathways runs between Clarence Pathways (East Amherst); Wehrle Dr (Clarence), where there is parking; and Cedar St (Akron), where there is parking.

Parking is also available at:

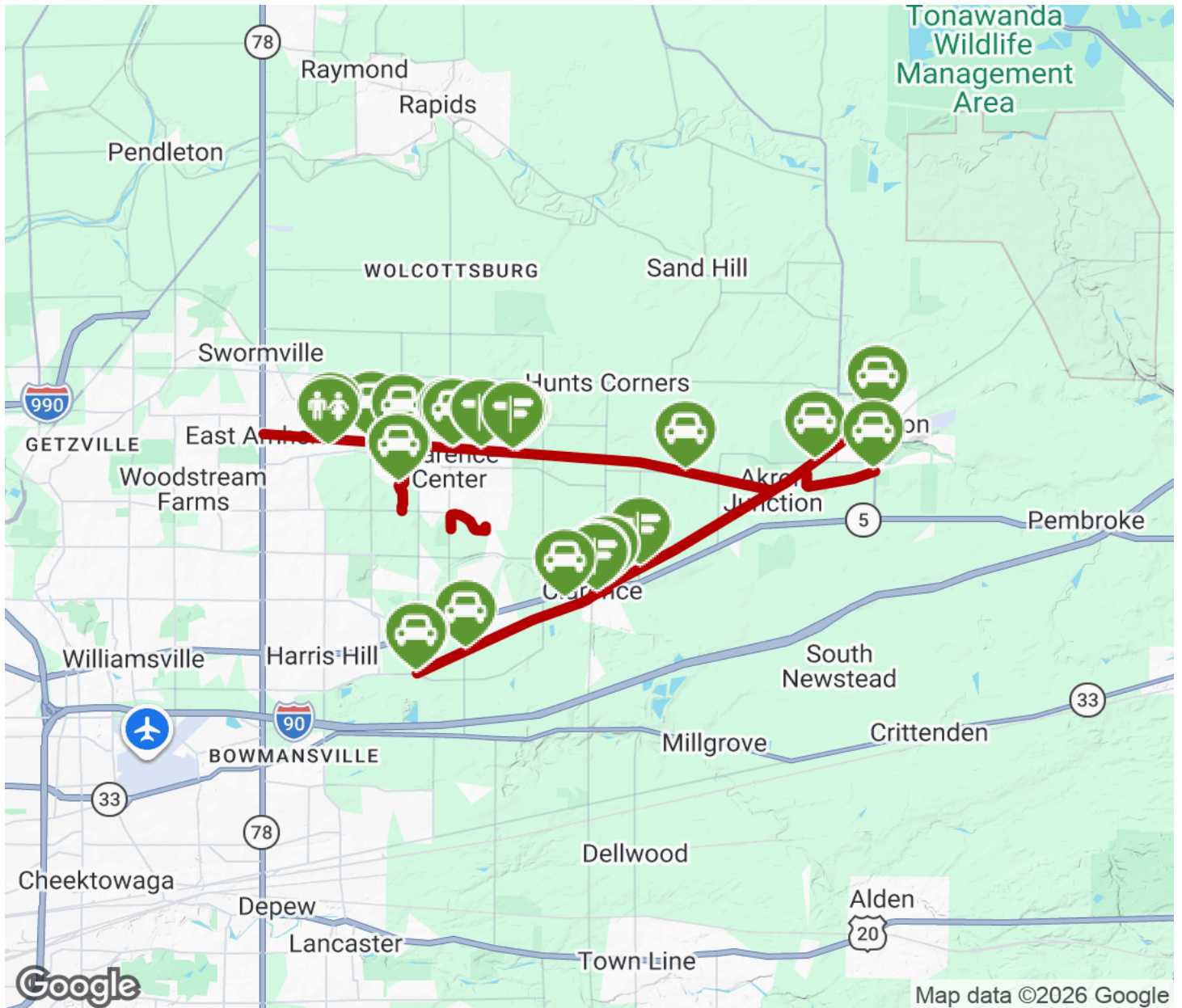
- Meadow Lakes Park, 8550 Clarence Center Rd (Clarence Center)

There are numerous parking options along the route, please visit the [TrailLink map](#) for all parking options and detailed directions.



# Clarence Pathways

New York



Trailhead



Restroom



Parking



Water Fountain



Tunnel



**TrailLink**  
by Rails-to-Trails Conservancy

**TrailLink.com**