



2026

TrailLink Unlimited 

Guides



Arkansas River Trail

Arkansas



Arkansas River Trail

Arkansas

Spanning 22.71 miles, the Arkansas River Trail runs riverside through Little Rock and North Little Rock. About the Route On the



River. Spanning 4,226 feet, it is the longest pedestrian bridge in North America that has not been previously used by trains or motor vehicles.

The other river crossings include two former railroad bridges converted for pedestrian use: the Clinton Presidential Park Bridge (which spans 1,600 feet and overlooks lush wetlands) and the Junction Bridge, dating back to the late 1800s and spanning 360 feet.

On the north shore, Burns Park is undoubtedly a highlight. It covers 1,700 acres and includes a historical log cabin, covered bridge, fishing pier, campgrounds, a 36-hole golf course and disc golf course, athletic facilities, and even a seasonal amusement park.

Spanning 22.71 miles, the Arkansas River Trail runs riverside through Little Rock and North Little Rock.

About the Route

On the southern bank, the trail extends east to the Clinton Presidential Library and west to Two Rivers Park, with another short spur that runs further west along Pinnacle Valley Rd. The trail inside Two River Park is a recreational highlight of the route; the park's 1,000-acre expanse offers wooded wetlands and open fields to explore on foot, by bike, or on horseback. Trail users can reach the park here by crossing the beautiful Two Rivers Park Bridge.

Three other bridges are part of the trail, most notably the Big Dam Bridge, which rises 90 feet above the Arkansas



Arkansas River Trail

Arkansas

States: Arkansas

Counties: Pulaski

Length: 22.71miles

Trail end points: Maumelle Park, 9009

Pinnacle Valley Rd (Little Rock) to E 2nd St.
(Little Rock)

Trail surfaces: Asphalt, Concrete

Trail category: Rail-Trail

Trail activities: Bike, Fishing, Inline

Skating, Walking, Wheelchair Accessible

Parking & Trail Access

The Arkansas River Trail runs between Maumelle Park, 9009 Pinnacle Valley Rd (Little Rock), and E 2nd St. (Little Rock), with parking at both ends.

Parking is also available at:

- Two Rivers Park, 6900 Two Rivers Park Road (Little Rock)
- Murray Park, 5900 Rebsamen Park Rd (Little Rock)
- 120 Riverfront Park Dr (North Little Rock)

Please see [TrailLink Map](#) for all parking options and detailed directions.



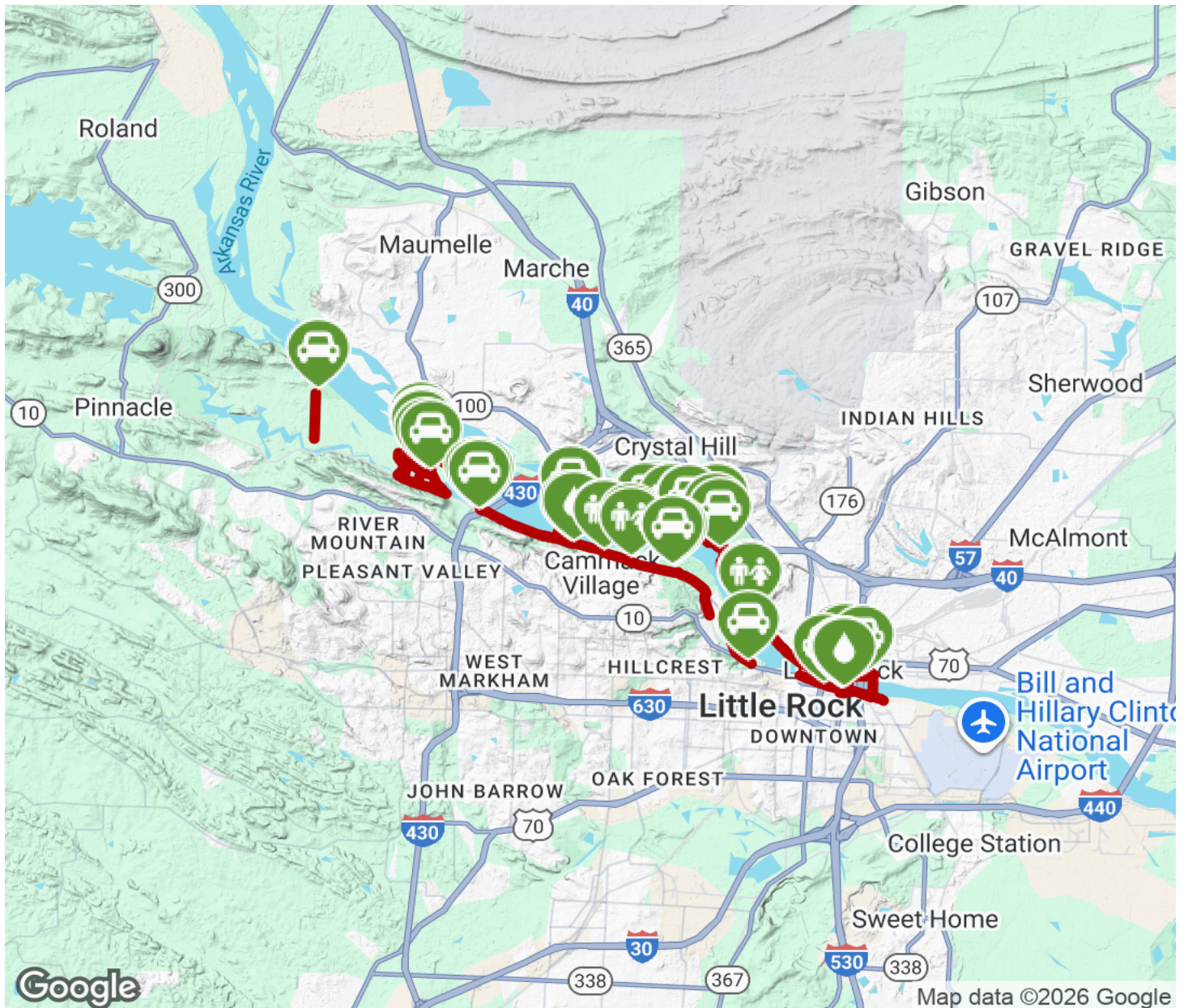
TrailLink
by Rails-to-Trails Conservancy

TrailLink.com



Arkansas River Trail

Arkansas



Trailhead



Restroom



Parking



Water Fountain



Tunnel



TrailLink
by Rails-to-Trails Conservancy

TrailLink.com