



2024

TrailLink Unlimited



Guides



**MCT  
Watershed  
Trail**  
*Illinois*



## MCT Watershed Trail

Illinois

*The Madison Count Transit (MCT) Watershed Trail is all about trains, bridges and waterways. It follows an abandoned rail*



The Madison Count Transit (MCT) Watershed Trail is all about trains, bridges and waterways. It follows an abandoned rail corridor built in 1868, the first to serve the city of Edwardsville, itself the third oldest city in Illinois. Later the line became part of the Illinois Traction System of electric trains; later still, the Illinois Terminal Railroad.

The trail starts at the junction with the [MCT Goshen Trail](#). Then it's on to a scenic overlook of the Watershed Nature Center and finally downtown Edwardsville. The trail is short and lends itself to leisurely enjoyment. It's flat and mostly tree covered, with just a handful of quiet roads and streets to cross.



# MCT Watershed Trail

*Illinois*

**States:** Illinois

**Counties:** Madison

Length: 1.3miles

**Trail end points:** MCT Goshen Trail to High St.  
(Edwardsville)

**Trail surfaces:** Asphalt

**Trail category:** Rail-Trail

**Trail activities:** Bike, Inline  
Skating, Wheelchair Accessible, Walking

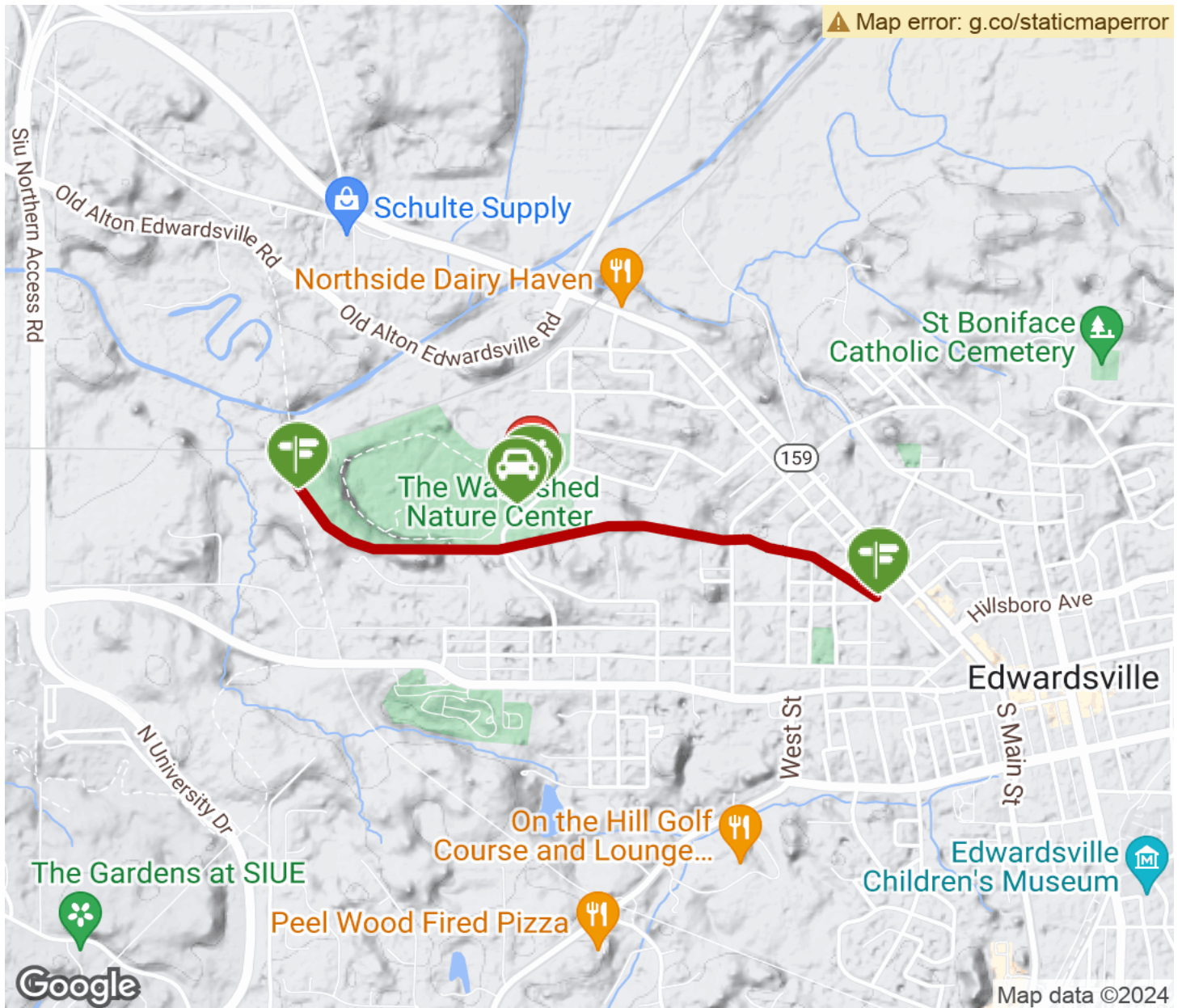
## Parking & Trail Access

Parking is at the Watershed Nature Center, 1591 Tower Avenue.



# MCT Watershed Trail

Illinois



Trailhead



Restroom



Parking



Water Fountain



Tunnel



**TrailLink**  
by Rails-to-Trails Conservancy

**TrailLink.com**