



2025

TrailLink Unlimited 

Guides



**MCT
Watershed
Trail**
Illinois



MCT Watershed Trail

Illinois

The Madison Count Transit (MCT) Watershed Trail is all about trains, bridges and waterways. It follows an abandoned rail



The Madison Count Transit (MCT) Watershed Trail is all about trains, bridges and waterways. It follows an abandoned rail corridor built in 1868, the first to serve the city of Edwardsville, itself the third oldest city in Illinois. Later the line became part of the Illinois Traction System of electric trains; later still, the Illinois Terminal Railroad.

The trail starts at the junction with the [MCT Goshen Trail](#). Then it's on to a scenic overlook of the Watershed Nature Center and finally downtown Edwardsville. The trail is short and lends itself to leisurely enjoyment. It's flat and mostly tree covered, with just a handful of quiet roads and streets to cross.



TrailLink
by Rails-to-Trails Conservancy

TrailLink.com



MCT Watershed Trail

Illinois

States: Illinois

Counties: Madison

Length: 1.3miles

Trail end points: MCT Goshen Trail to High St.
(Edwardsville)

Trail surfaces: Asphalt

Trail category: Rail-Trail

Trail activities: Bike, Inline

Skating, Wheelchair Accessible, Walking

Parking & Trail Access

Parking is at the Watershed Nature Center, 1591 Tower Avenue.



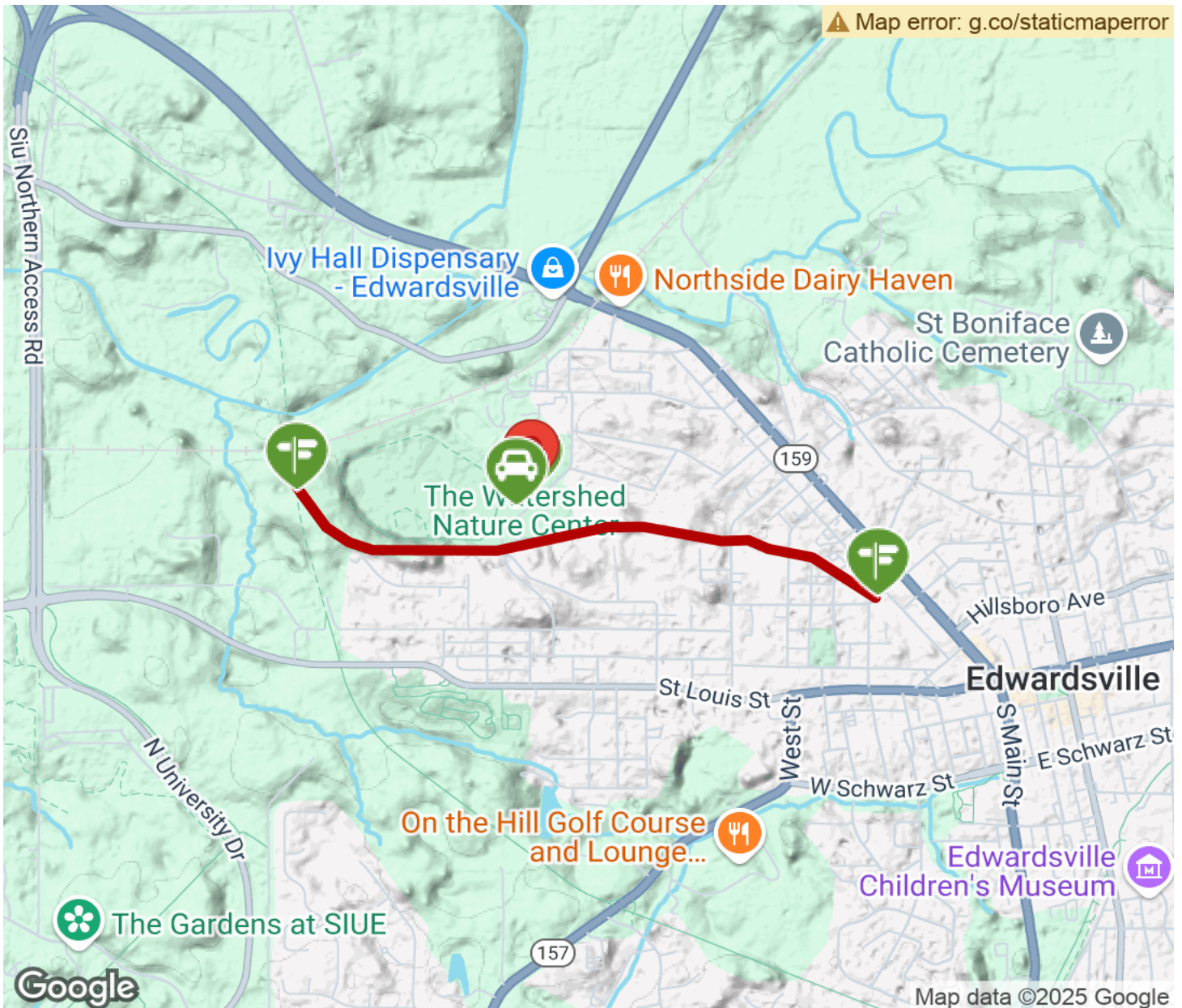
TrailLink
by Rails-to-Trails Conservancy

TrailLink.com



MCT Watershed Trail

Illinois



Trailhead



Restroom



Parking



Water Fountain



Tunnel



TrailLink
by Rails-to-Trails Conservancy

TrailLink.com