



2025

TrailLink Unlimited 

Guides



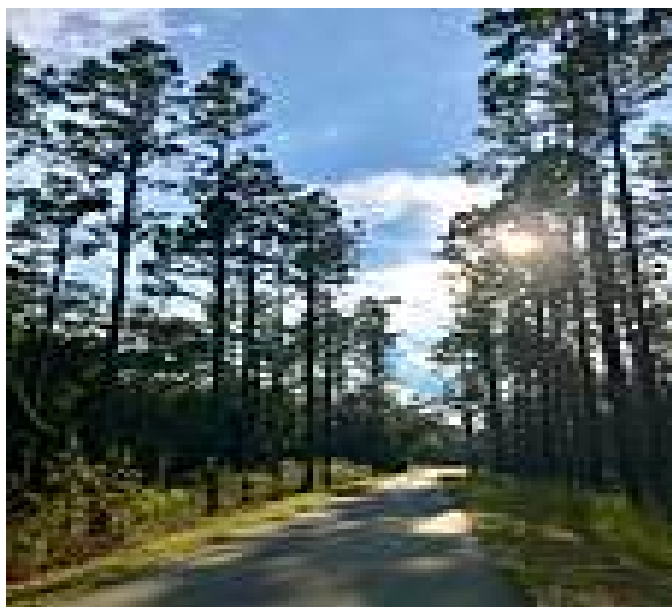
**Good
Neighbor
Trail**
Florida



Good Neighbor Trail

Florida

Overview The Good Neighbor Trail runs for 10 miles between Brooksville and Withlacoochee State Forest, following the former



small residential areas. Be sure to watch for wildlife as the trail passes through Croom Wildlife Management Area inside of Withlacoochee State Forest. The Good Neighbor Trail's eastern endpoint is in Croom, which is inside of the state forest.

Connections

At the trail's eastern endpoint, the Good Neighbor Trail intersects with the [Withlacoochee State Trail](#).

Overview

The Good Neighbor Trail runs for 10 miles between Brooksville and Withlacoochee State Forest, following the former Florida Southern Railroad Line. The paved path offers a scenic, tree-lined path through western Florida.

About the Route

The western endpoint of the Good Neighbor Trail is in downtown Brooksville, south of Russell Street, in what was once a railroad switching yard. Here, the Brooksville Train Depot, dating back to 1885, is open a few days a week for visitors. Inside are historical exhibits and model trains with an 1880s rail car and picnic pavilions outside. As the trail heads east out of Brooksville, the trail passes a few



Good Neighbor Trail

Florida

States: Florida

Counties: Hernando

Length: 10.4miles

Trail end points: Russell Street Trailhead (Brooksville) to Withlacoochee State Trail (Croom)

Trail surfaces: Asphalt

Trail category: Rail-Trail

Trail activities: Bike,Inline

Skating, Wheelchair Accessible, Walking

Parking & Trail Access

The Good Neighbor Trail runs between Russell Street Trailhead (Brooksville) and Withlacoochee State Trail (Croom) with parking available at the western endpoint.

Please see the [TrailLink Map](#) for all parking options and detailed directions.



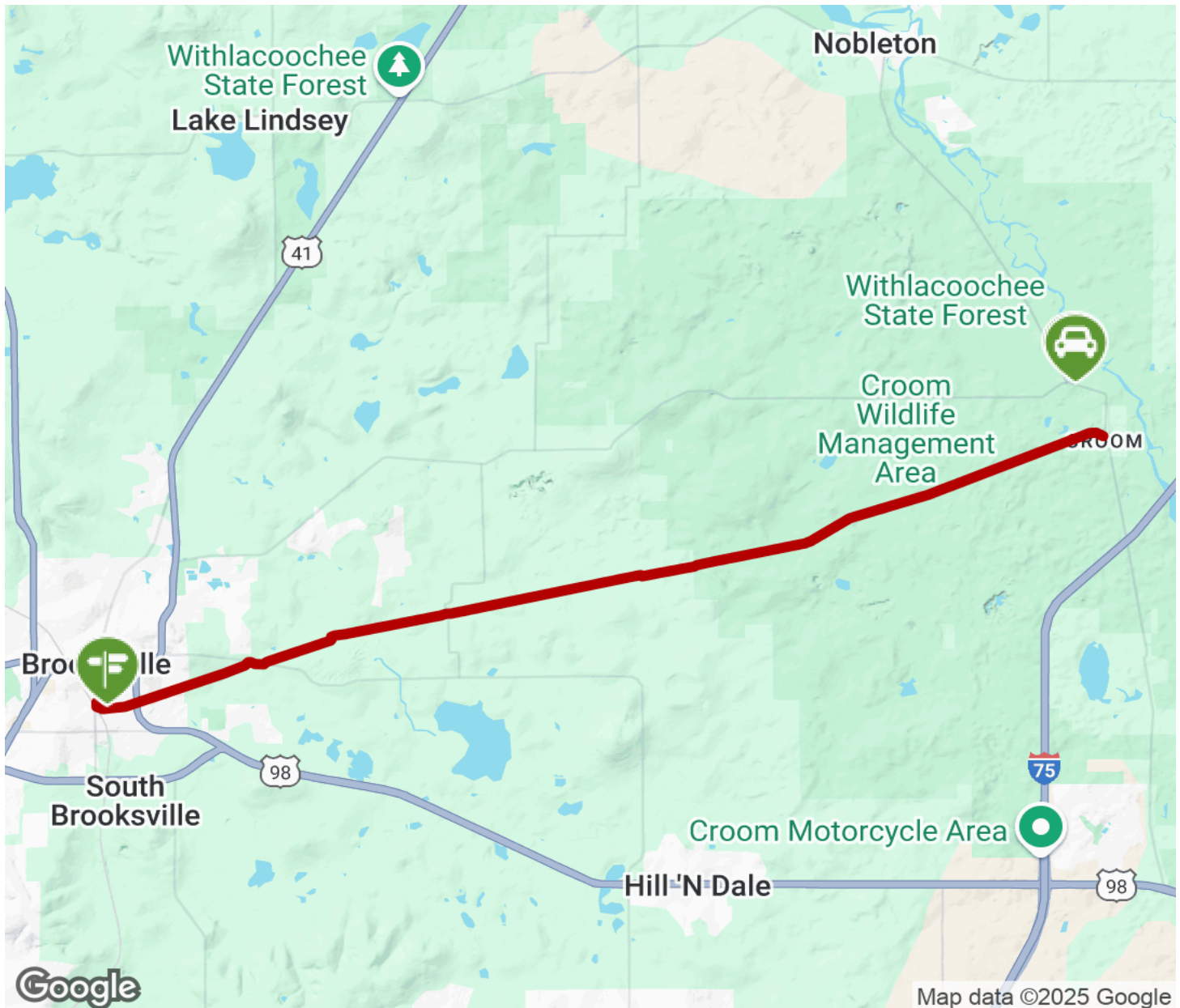
TrailLink
by Rails-to-Trails Conservancy

TrailLink.com



Good Neighbor Trail

Florida



Trailhead



Restroom



Parking



Water Fountain



Tunnel



TrailLink
by Rails-to-Trails Conservancy

TrailLink.com