



2025

TrailLink Unlimited 

Guides



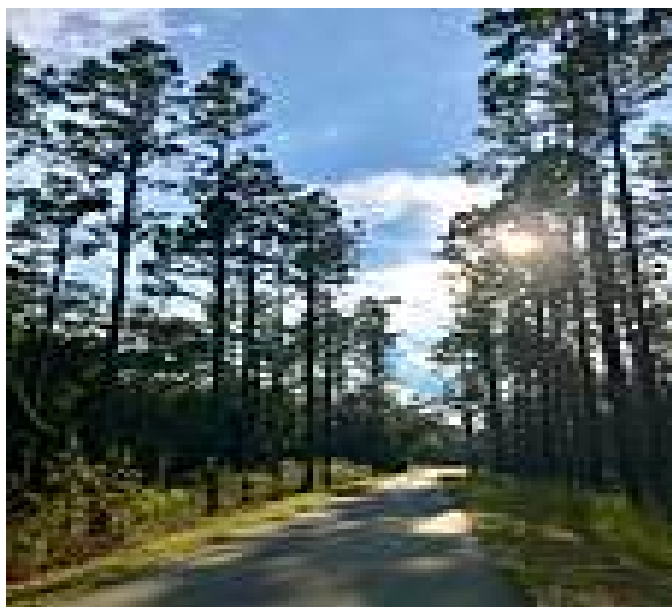
**Good  
Neighbor  
Trail**  
*Florida*



## Good Neighbor Trail

Florida

*The Good Neighbor Trail runs for 10 miles between Brooksville and Withlacoochee State Forest, following the former Florida Southern*



inside of Withlacoochee State Forest. The Good Neighbor Trail's eastern endpoint is in Croom, which is inside of the state forest.

### Connections

At the trail's eastern endpoint, the Good Neighbor Trail intersects with the [Withlacoochee State Trail](#).

The Good Neighbor Trail runs for 10 miles between Brooksville and Withlacoochee State Forest, following the former Florida Southern Railroad Line. The paved path offers a scenic, tree-lined path through western Florida.

### About the Route

The western endpoint of the Good Neighbor Trail is in downtown Brooksville, south of Russell Street, in what was once a railroad switching yard. Here, the Brooksville Train Depot, dating back to 1885, is open a few days a week for visitors. Inside are historical exhibits and model trains with an 1880s rail car and picnic pavilions outside. As the trail heads east out of Brooksville, the trail passes a few small residential areas. Be sure to watch for wildlife as the trail passes through Croom Wildlife Management Area



# Good Neighbor Trail

*Florida*

**States:** Florida

**Counties:** Hernando

Length: 10.4 miles

**Trail end points:** Russell Street Trailhead (Brooksville) to Withlacoochee State Trail (Croom)

**Trail surfaces:** Asphalt

**Trail category:** Rail-Trail

**Trail activities:** Bike, Inline

Skating, Walking, Wheelchair Accessible

## Parking & Trail Access

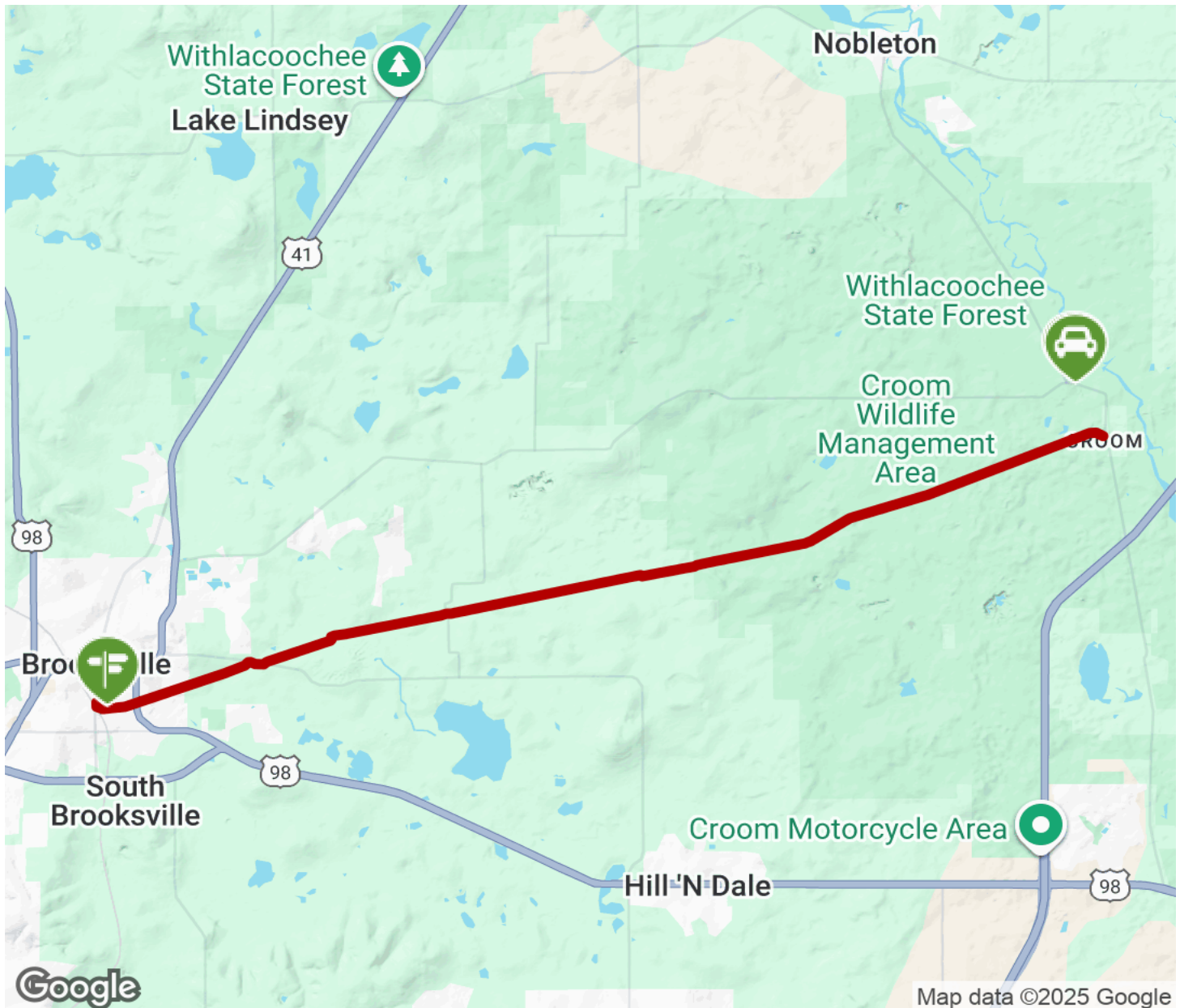
The Good Neighbor Trail runs between Russell Street Trailhead (Brooksville) and Withlacoochee State Trail (Croom) with parking available at the western endpoint.

Please see the [TrailLink Map](#) for all parking options and detailed directions.



# Good Neighbor Trail

Florida



Trailhead



Restroom



Parking



Water Fountain



Tunnel



**TrailLink**  
by Rails-to-Trails Conservancy

**TrailLink.com**