



2025

TrailLink Unlimited 

Guides



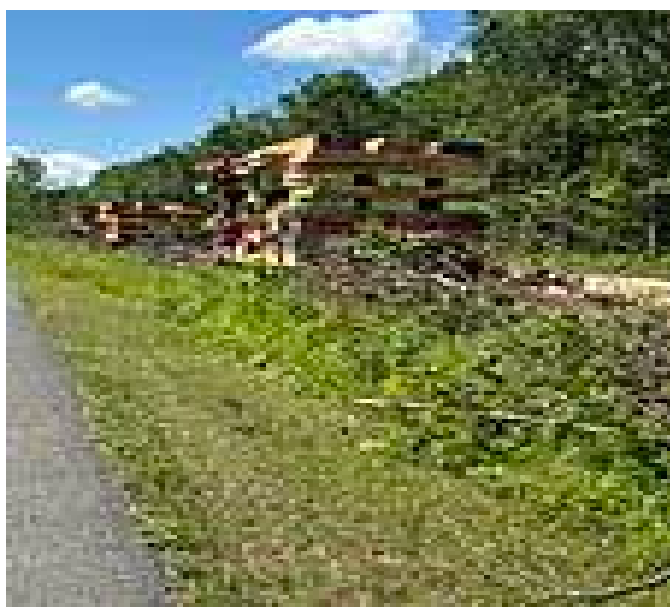
**Ballston
Veterans Bike
Path**
New York



Ballston Veterans Bike Path

New York

This asphalt trail is the legacy of an inter-urban trolley system operated by Schenectady Railway Company (SRC) in the early



York 146A, a main route into town. The bike path will someday link up with an emerging network of multi-use trails in Saratoga County.

At the trailhead on Main Street watch for a monument dedicated to veterans from the town. Trees border much of the trail on one side, giving way for a time to scrub growth that allows a pleasing view of pastures and woods beyond. On the other side, a berm with sumac, holly and other shrubs separates the path from an active rail line. The Canadian Pacific tracks parallel the trail for most of its length. The path is open overhead so don't forget sunscreen.

Parking at Outlet Road is limited. Across the road, the trolley corridor—overgrown—appears to continue. For now, however, you'll need to retrace your route back to the start. If you brought your fishing rod and license, turn on Outlet Road and look for the sign for the fishing pier.

This asphalt trail is the legacy of an inter-urban trolley system operated by Schenectady Railway Company (SRC) in the early 1900s. To attract visitors on weekends, SRC built an amusement park at Ballston Lake with a beachfront, some baseball fields and oval tracks for bike races and footraces. Passengers paid 25 cents to ride the wooden trolley car from Schenectady to Ballston Lake and beyond, even to Saratoga Springs. The trolley ceased operation in 1940, and the amusement park is just a memory now. There's good bass fishing at the fishing pier on Ballston Lake, not far from the Outlet Road trailhead.

The Ballston Veterans Bike Path has a lot to offer. Informative signs fill you in on the trail corridor's history. Every quarter mile, mileage markers help you track your progress. The trail is conveniently reached from New



Ballston Veterans Bike Path

New York

States: New York

Counties: Saratoga

Length: 3.5miles

Trail end points: Outlet Road at Powers Lane to
SR 146A at Firemen's Lane

Trail surfaces: Asphalt

Trail category: Rail-Trail

Trail activities: Bike,Inline

Skating,Fishing,Wheelchair

Accessible,Walking,Cross Country Skiing

Parking & Trail Access

For the Route 146A trailhead, take Exit 9 off I-87 and head west on State Route 146. Take Route 146A north for about 6.5 miles to the Village of Ballston Lake. Shortly after crossing the railroad tracks, you'll spot the parking area for the bike path on your right.



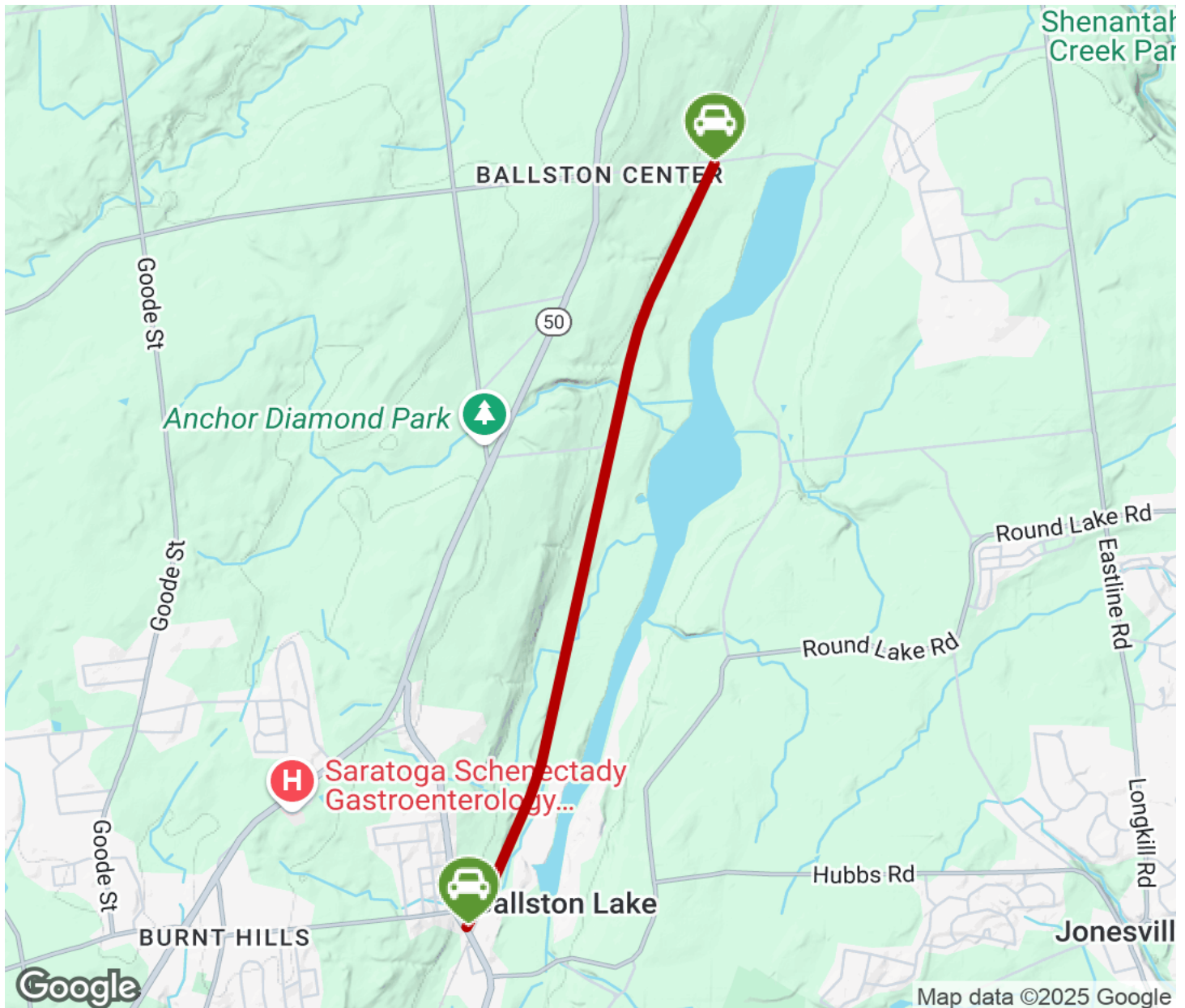
TrailLink
by Rails-to-Trails Conservancy

TrailLink.com



Ballston Veterans Bike Path

New York



Trailhead



Restroom



Parking



Water Fountain



Tunnel



TrailLink
by Rails-to-Trails Conservancy

TrailLink.com