



2025

TrailLink Unlimited 

Guides



**Old Chain of
Rocks Bridge**
Illinois, Missouri



Old Chain of Rocks Bridge

Illinois, Missouri

Overview The Old Chain of Rocks Bridge links two states—Illinois and Missouri—as the mile-long bridge crosses the Mississippi



At the bridge's Missouri side, the bridge intersects with the [St. Louis Riverfront Trail](#).

Trail History

The Old Chain of Rocks Bridge was part of the renowned Route 66 and gets its name from the river's 17 miles of rocky shoals south of the bridge, now covered by a low-water dam. The bridge was originally going to be built as a straight shot across the river, but after multiple discussions with captains on the river, both parties decided the bridge needed to bend. Crews began construction on the bridge in 1927, and after a series of floods and ice, the bridge was opened to vehicle traffic in July 1929. Route 66 was rerouted over the bridge in 1936, but 32 years later, officials closed the Old Chain of Rocks Bridge to traffic.

Overview

The Old Chain of Rocks Bridge links two states—Illinois and Missouri—as the mile-long bridge crosses the Mississippi River. The bridge carries bikes and pedestrians between the two states.

About the Route

The Old Chain of Rocks Bridge offers a scenic view of the Mississippi River, the St. Louis skyline, and the water intake towers in the river. The bridge opened to traffic in 1929 and takes a 30-degree turn midway through while it sits more than 60 feet above the Mississippi River.

Connections



TrailLink
by Rails-to-Trails Conservancy

TrailLink.com



Old Chain of Rocks Bridge

Illinois, Missouri

States: Illinois, Missouri

Counties: Madison, St. Louis

Length: 1miles

Trail end points: Chain of Rocks Rd. on
Chouteau Island (Madison, IL) to St. Louis
Riverfront Trail at Riverview Dr. (St. Louis, MO)

Trail surfaces: Concrete

Trail category: Greenway/Non-RT

Trail activities: Bike, Inline

Skating, Wheelchair Accessible, Walking

Parking & Trail Access

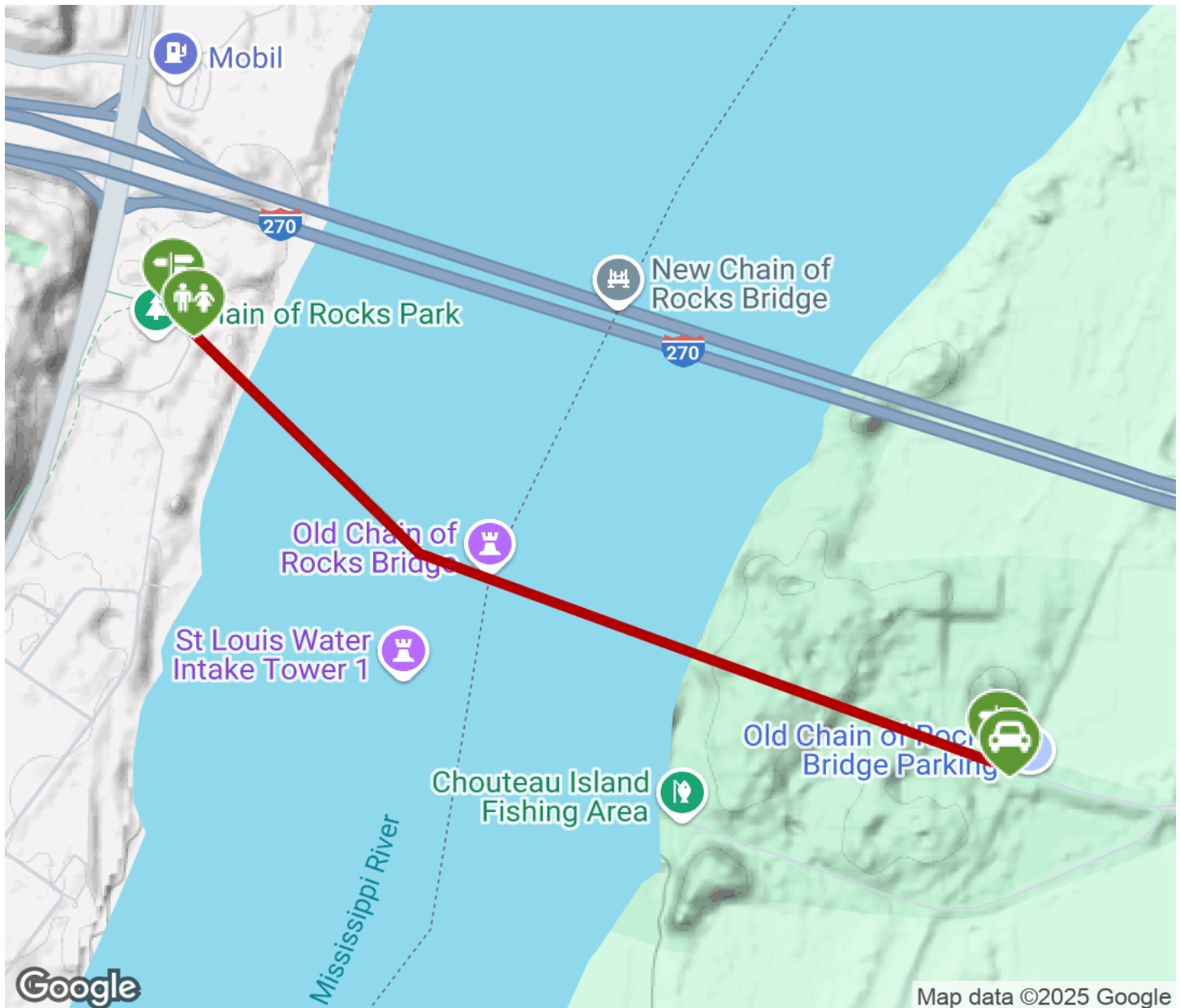
The Old Chain of Rocks Bridge runs between St. Louis, Missouri, and Madison, Illinois. Parking is available on the Illinois side at 4205-4207 Chain of Rocks Rd.

Please see the [TrailLink Map](#) for detailed directions.



Old Chain of Rocks Bridge

Illinois, Missouri



Trailhead



Restroom



Parking



Water Fountain



Tunnel



TrailLink
by Rails-to-Trails Conservancy

TrailLink.com