



2026

TrailLink Unlimited



Guides



**Old Chain of  
Rocks Bridge**  
*Illinois, Missouri*



# Old Chain of Rocks Bridge

Illinois, Missouri

*The Old Chain of Rocks Bridge links two states—Illinois and Missouri—as the mile-long bridge crosses the Mississippi River.*



the [St. Louis Riverfront Trail](#).

## Trail History

The Old Chain of Rocks Bridge was part of the renowned Route 66 and gets its name from the river's 17 miles of rocky shoals south of the bridge, now covered by a low-water dam. The bridge was originally going to be built as a straight shot across the river, but after multiple discussions with captains on the river, both parties decided the bridge needed to bend. Crews began construction on the bridge in 1927, and after a series of floods and ice, the bridge was opened to vehicle traffic in July 1929. Route 66 was rerouted over the bridge in 1936, but 32 years later, officials closed the Old Chain of Rocks Bridge to traffic.

The Old Chain of Rocks Bridge links two states—Illinois and Missouri—as the mile-long bridge crosses the Mississippi River. The bridge carries bikes and pedestrians between the two states.

## About the Route

The Old Chain of Rocks Bridge offers a scenic view of the Mississippi River, the St. Louis skyline, and the water intake towers in the river. The bridge opened to traffic in 1929 and takes a 30-degree turn midway through while it sits more than 60 feet above the Mississippi River.

## Connections

At the bridge's Missouri side, the bridge intersects with



# Old Chain of Rocks Bridge

*Illinois, Missouri*

**States:** Illinois, Missouri

**Counties:** Madison, St. Louis

Length: 1miles

**Trail end points:** Chain of Rocks Rd. on  
Chouteau Island (Madison, IL) to St. Louis  
Riverfront Trail at Riverview Dr. (St. Louis, MO)

**Trail surfaces:** Concrete

**Trail category:** Greenway/Non-RT

**Trail activities:** Bike, Inline

Skating, Walking, Wheelchair Accessible

## Parking & Trail Access

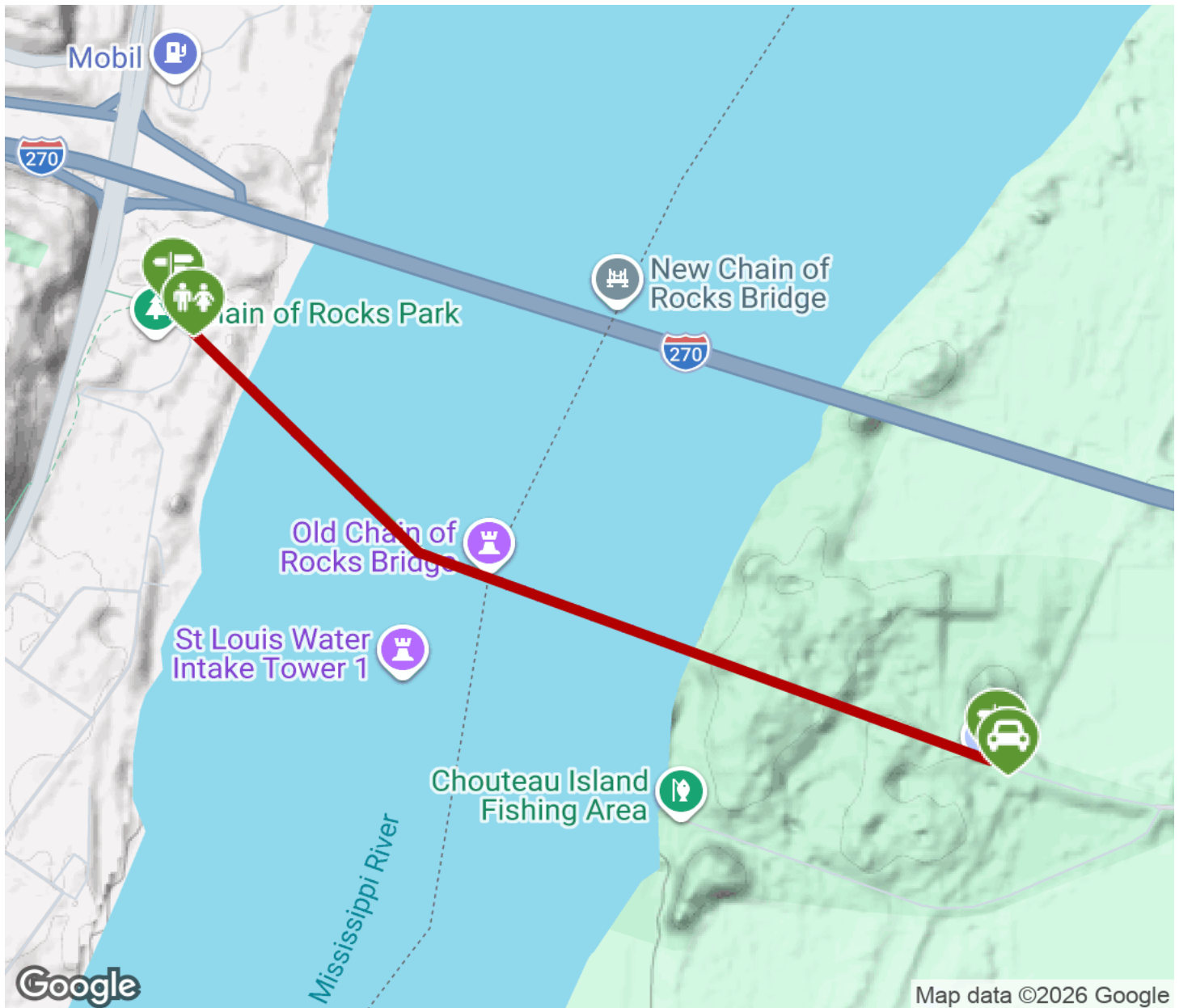
The Old Chain of Rocks Bridge runs between St. Louis, Missouri, and Madison, Illinois. Parking is available on the Illinois side at 4205-4207 Chain of Rocks Rd.

Please see the [TrailLink Map](#) for detailed directions.



# Old Chain of Rocks Bridge

Illinois, Missouri



Trailhead



Restroom



Parking



Water Fountain



Tunnel



**TrailLink**  
by Rails-to-Trails Conservancy

**TrailLink.com**