



2026

TrailLink Unlimited 

Guides



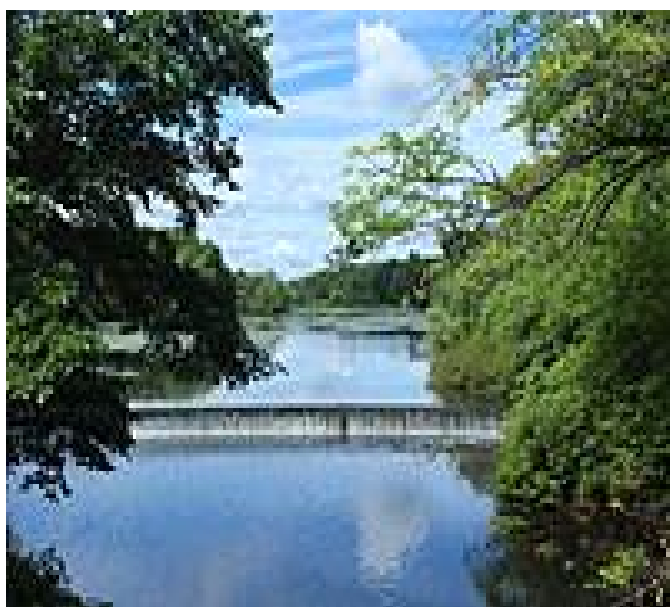
**Ten Mile  
River  
Greenway**  
*Rhode Island*



## Ten Mile River Greenway

Rhode Island

*Ten Mile River Greenway, named for the waterway it parallels and not its length, runs 3 miles through a serene and green corridor*



Ten Mile River Greenway, named for the waterway it parallels and not its length, runs 3 miles through a serene and green corridor connecting the City of East Providence and Pawtucket. The southern end of the paved pathway begins at the Kimberly Ann Rock Memorial Athletic Complex, a popular spot for local sporting events, where trail users will have access to a large parking lot flanked by trees. If a game is playing when you arrive, restrooms will be available, but the bathrooms are otherwise locked. The trail also does not offer any drinking fountains, so be sure to pack water.

### About the Route

From the trail's southern endpoint, the greenway heads north, loosely paralleling the state's border with

Massachusetts, and winds through leafy woodlands with an occasional pine tree. To the right, the adjacent river glimmers through the leaves. At intermittent spots along the trail, trail users can hop off their bikes and walk down to the waterfront, where one might see swans gliding through the calm water. Interpretative signage about the area's flora and fauna can be found trailside.

Nearing the 2-mile mark, the trail approaches the Slater Memorial Park on the left, with a large parking lot, picnic tables, and portable toilets. Continuing forward, keep your eyes peeled for a tan building just off the trail to the left; the trail users won't want to miss it, as it houses a beautiful Looff Carousel built in 1895. In addition to leaping horses with bejeweled saddles, it offers lions, dogs, and a giraffe to ride. Inside, trail users can buy tickets, snacks, and cold drinks. At the nearby boathouse on the banks of a large pond, swan- and dragon-shaped paddleboats are also available to rent and enjoy on the water.

A little farther on is the trail's only street crossing at Armistice Boulevard. Beyond it, the last mile of the trail has a few gentle climbs and curves that vary the experience. The pathway reaches its northern endpoint at another large parking lot, this one for the Doreen Ann Tomlinson Sports Complex.



# Ten Mile River Greenway

*Rhode Island*

**States:** Rhode Island

**Counties:** Providence

Length: 3miles

**Trail end points:** Kimberly Ann Rock Memorial Athletic Fields (East Providence) to 401 Daggett Ave. (Pawtucket)

**Trail surfaces:** Asphalt

**Trail category:** Greenway/Non-RT

**Trail activities:** Bike,Fishing,Inline Skating,Walking,Wheelchair Accessible,Cross Country Skiing

## Parking & Trail Access

The Ten Mile River Greenway runs between Kimberly Ann Rock Memorial Athletic Fields (East Providence) and 401 Daggett Ave. (Pawtucket), with parking available at both ends.

Parking is also available at:

- Slate Park, 150 Naushon Rd. (Pawtucket)

Please see [TrailLink Map](#) for all parking options and detailed directions.



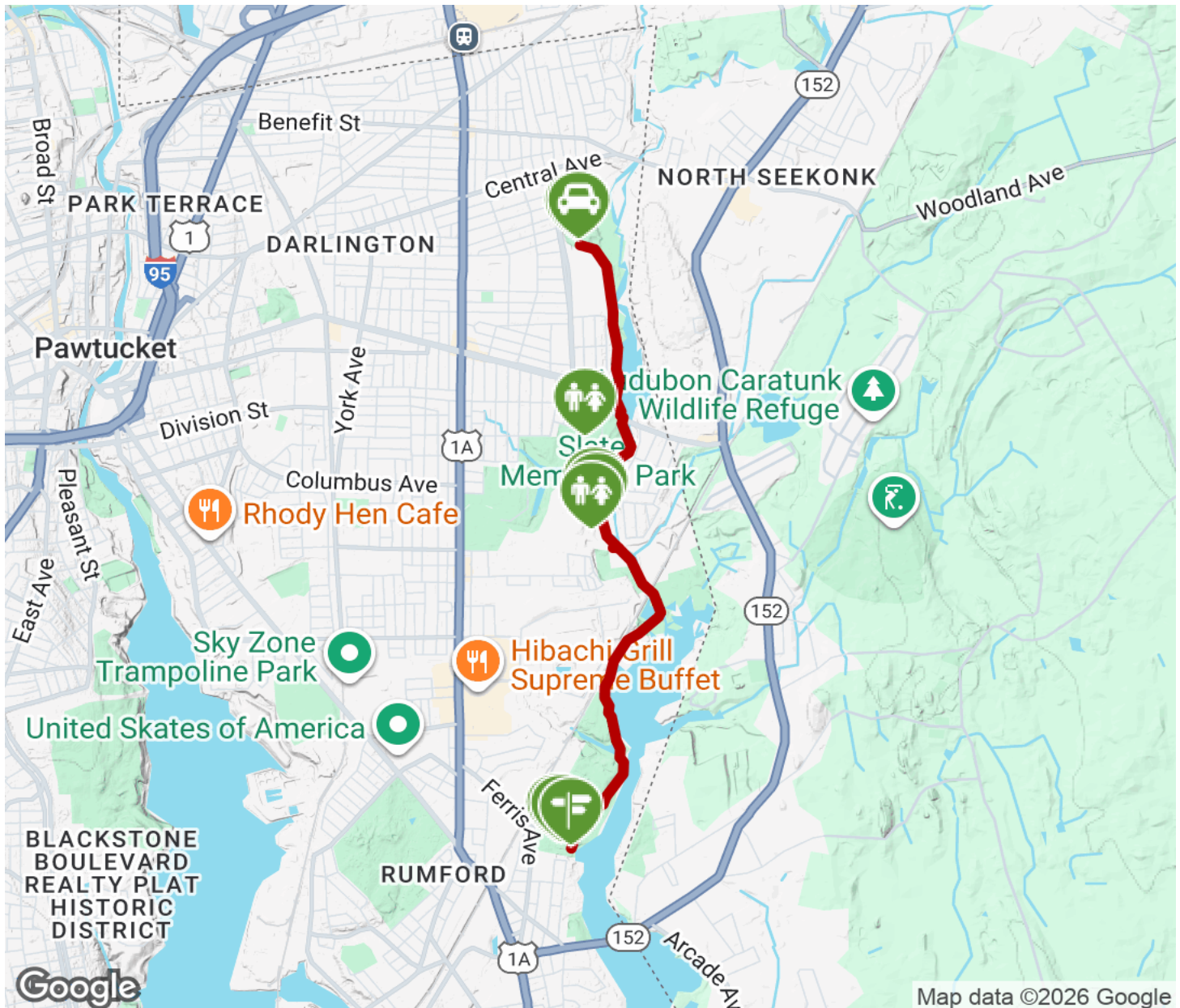
**TrailLink**  
by Rails-to-Trails Conservancy

**TrailLink.com**



# Ten Mile River Greenway

Rhode Island



Trailhead



Restroom



Parking



Water Fountain



Tunnel



**TrailLink**  
by Rails-to-Trails Conservancy

**TrailLink.com**