



2025

TrailLink Unlimited 

Guides



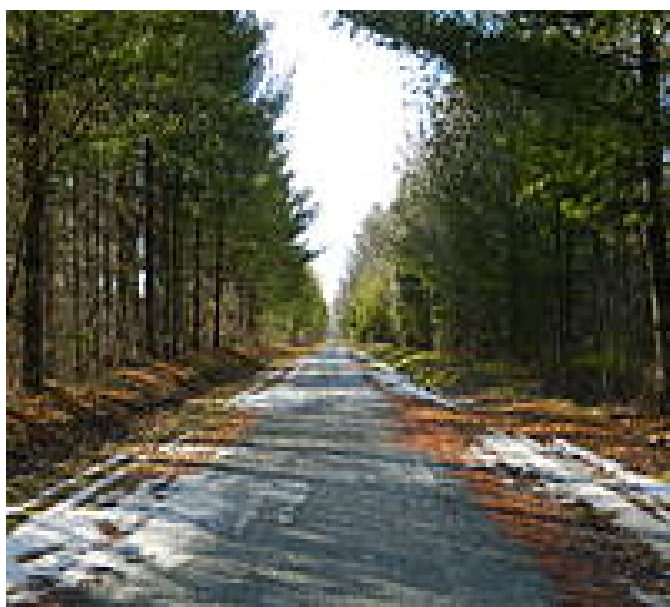
**Zim Smith**  
**Mid-County**  
**Trail**  
*New York*



# Zim Smith Mid-County Trail

New York

*Overview The Zim Smith Mid-County Trail runs for 11.3 miles between Ballston-Spa and Mechanicville. The paved trail is*



Shenantaha Creek Park. The name means “deer water” in Iroquois, and the trail passes a flax mill ruins there. The park also has restrooms, a drinking fountain, and other recreational amenities.

The path rolls through remote woodland for another 1.5 miles until it passes beneath I-87 and beside a dirt trail on the left known as the Zim Smith Connector. The connector goes 1.2 miles east to US 9 in Malta, where it connects to a paved trail system serving the Luther Forest Technology Campus, home of chip makers and other tech companies.

In another mile, a handsome white-frame church and other period buildings signal the trail's arrival in Round Lake Village, which is listed on the National Register of Historic Places. The Victorian village, with quiet streets and gingerbread cottages featuring long porches, recalls a time when it served as a Methodist camp meeting site with thousands of visitors every summer. The Round Lake Auditorium, dating from the late 1800s on Wesley Avenue, is home to a working 1,900-pipe organ named National Historic Landmark in 2017.

## Overview

The Zim Smith Mid-County Trail runs for 11.3 miles between Ballston-Spa and Mechanicville. The paved trail is considered the backbone of a growing trail system, with connections to major tech companies and hiking trails.

## About the Route

The northern endpoint of the Zim Smith Mid-County Trail is located in Ballston Spa. At one time, four railroads passed through the village, founded near a mineral spring known for its curative powers. The paved trail starts out along an active railroad for a short distance, a configuration known as rail-with-trail, before veering into the woods, passing an industrial park, and arriving at

Leaving Round Lake, the trail crosses US 9 in 0.7 miles. The trail passes bird-viewing spots in the wetlands, and there is a trailhead at Coons Crossing Road in Halfmoon. The Mechanicville extension travels about 3 miles along the south side of the railroad yard to Elizabeth Street Extension in Mechanicville.

## Trail History

The trail follows an old railroad corridor completed as the Rensselaer and Saratoga Railroad between Ballston Spa and Troy in 1836. Leased by the Delaware & Hudson (D&H) Railroad beginning in 1871, it was acquired by D&H in 1945.



# Zim Smith Mid-County Trail

*New York*

**States:** New York

**Counties:** Saratoga

Length: 11.3miles

**Trail end points:** Oak St., 0.3 mile south of E. High St. (Ballston Spa) to Elizabeth Street (Mechanicville)

**Trail surfaces:** Asphalt

**Trail category:** Rail-Trail

**Trail activities:** Bike,Inline

Skating,Wheelchair

Accessible,Snowmobiling,Walking,Cross

## Parking & Trail Access

The Zim Smith Mid-County Trail runs between Oak St., 0.3 miles south of E. High St. (Ballston Spa), and Elizabeth Street (Mechanicville), with parking available at both endpoints.

Parking is also available at:

- 3 Curry Rd. (Round Lake)

Please see the [TrailLink Map](#) for all parking options and detailed directions.



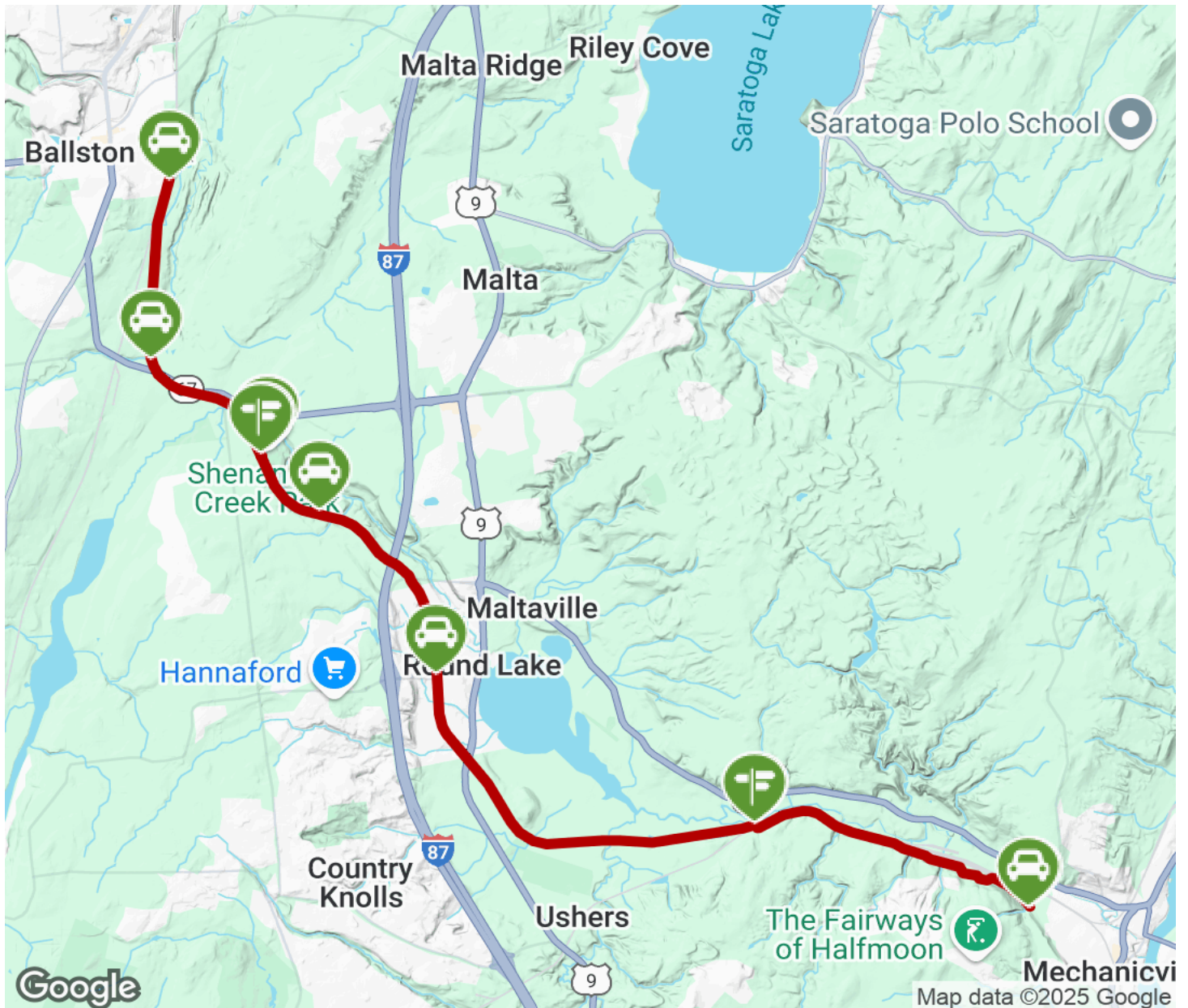
**TrailLink**  
by Rails-to-Trails Conservancy

**TrailLink.com**



# Zim Smith Mid-County Trail

New York



Trailhead



Restroom



Parking



Water Fountain



Tunnel



**TrailLink**  
by Rails-to-Trails Conservancy

**TrailLink.com**