



2026

TrailLink Unlimited 

Guides



**Preston  
Railroad Trail**  
*Washington*



## Preston Railroad Trail

Washington

*The Preston Railroad Trail, located within Tiger Mountain State Forest, is popular with mountain bikers. The rolling trail follows a*



The Preston Railroad Trail, located within Tiger Mountain State Forest, is popular with mountain bikers. The rolling trail follows a contour line around East Tiger Mountain and can be bumpy in places with tree roots and rocks. The trail provides nearly 1,000 vertical feet of hill on switchbacks. Other trails in the area include the [Iverson Railroad Grade](#) and the [Northwest Timber Trail](#).

Often the trails are closed between October 15 and April 15. Check with Tiger Mountain State Forest for details.



**TrailLink**  
by Rails-to-Trails Conservancy

**TrailLink.com**



# Preston Railroad Trail

*Washington*

**States:** Washington

**Counties:** King

Length: 3.2miles

**Trail end points:** Tiger Mountain State Forest  
to North Bend

**Trail surfaces:** Crushed Stone,Dirt,Gravel

**Trail category:** Rail-Trail

**Trail activities:** Horseback Riding,Mountain  
Biking,Walking

## Parking & Trail Access

Parking for the Preston Railroad Trail is available at East Tiger Summit.

Note: Parking fees apply.



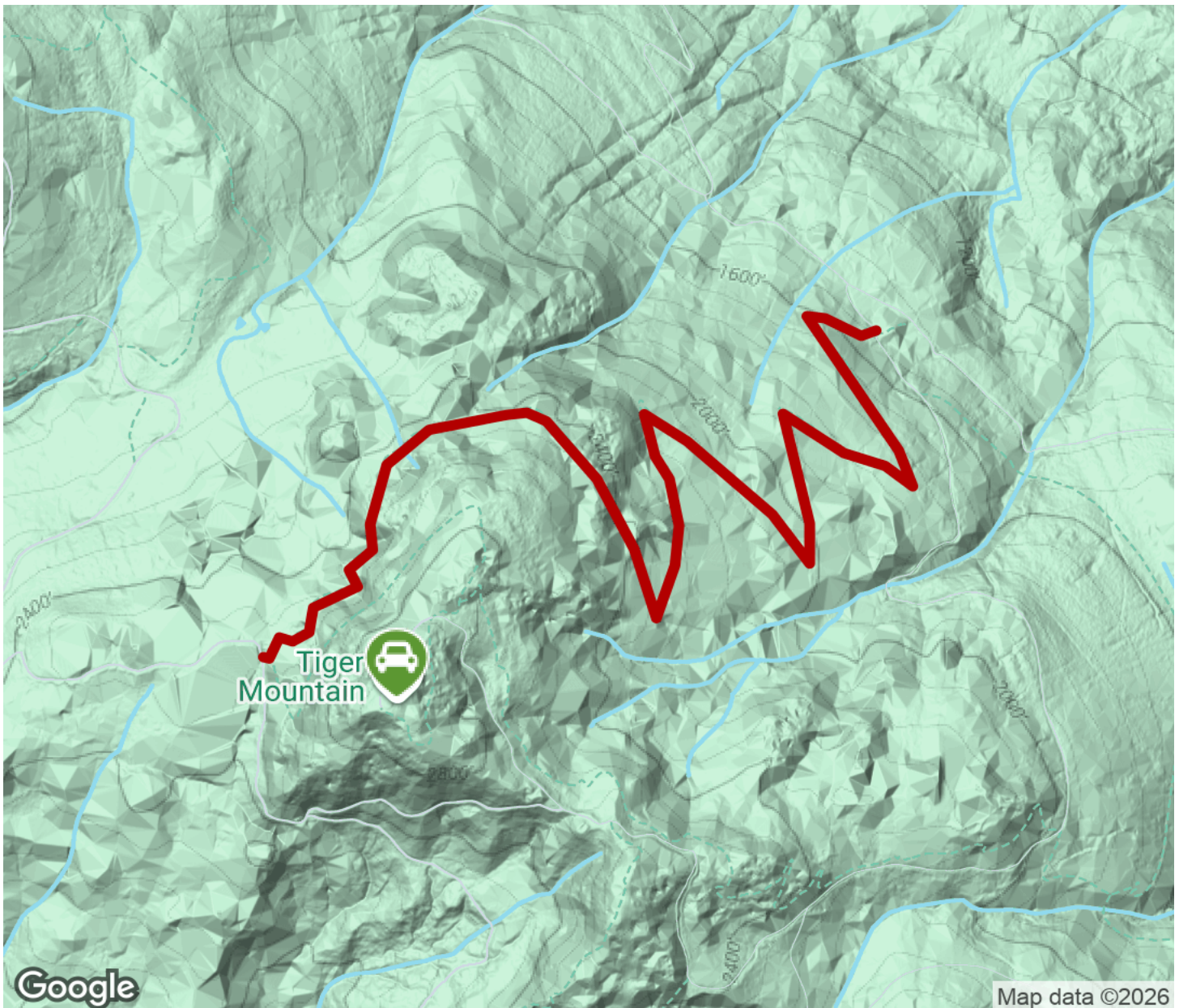
**TrailLink**  
by Rails-to-Trails Conservancy

**TrailLink.com**



# Preston Railroad Trail

Washington



Trailhead



Restroom



Parking



Water Fountain



Tunnel



**TrailLink**  
by Rails-to-Trails Conservancy

**TrailLink.com**