



2026

TrailLink Unlimited



Guides



**Preston
Railroad Trail**
Washington



Preston Railroad Trail

Washington

The Preston Railroad Trail, located within Tiger Mountain State Forest, is popular with mountain bikers. The rolling trail follows a



The Preston Railroad Trail, located within Tiger Mountain State Forest, is popular with mountain bikers. The rolling trail follows a contour line around East Tiger Mountain and can be bumpy in places with tree roots and rocks. The trail provides nearly 1,000 vertical feet of hill on switchbacks. Other trails in the area include the [Iverson Railroad Grade](#) and the [Northwest Timber Trail](#).

Often the trails are closed between October 15 and April 15. Check with Tiger Mountain State Forest for details.



Preston Railroad Trail

Washington

States: Washington

Counties: King

Length: 3.2miles

Trail end points: Tiger Mountain State Forest
to North Bend

Trail surfaces: Crushed Stone,Dirt,Gravel

Trail category: Rail-Trail

Trail activities: Horseback Riding,Mountain
Biking,Walking

Parking & Trail Access

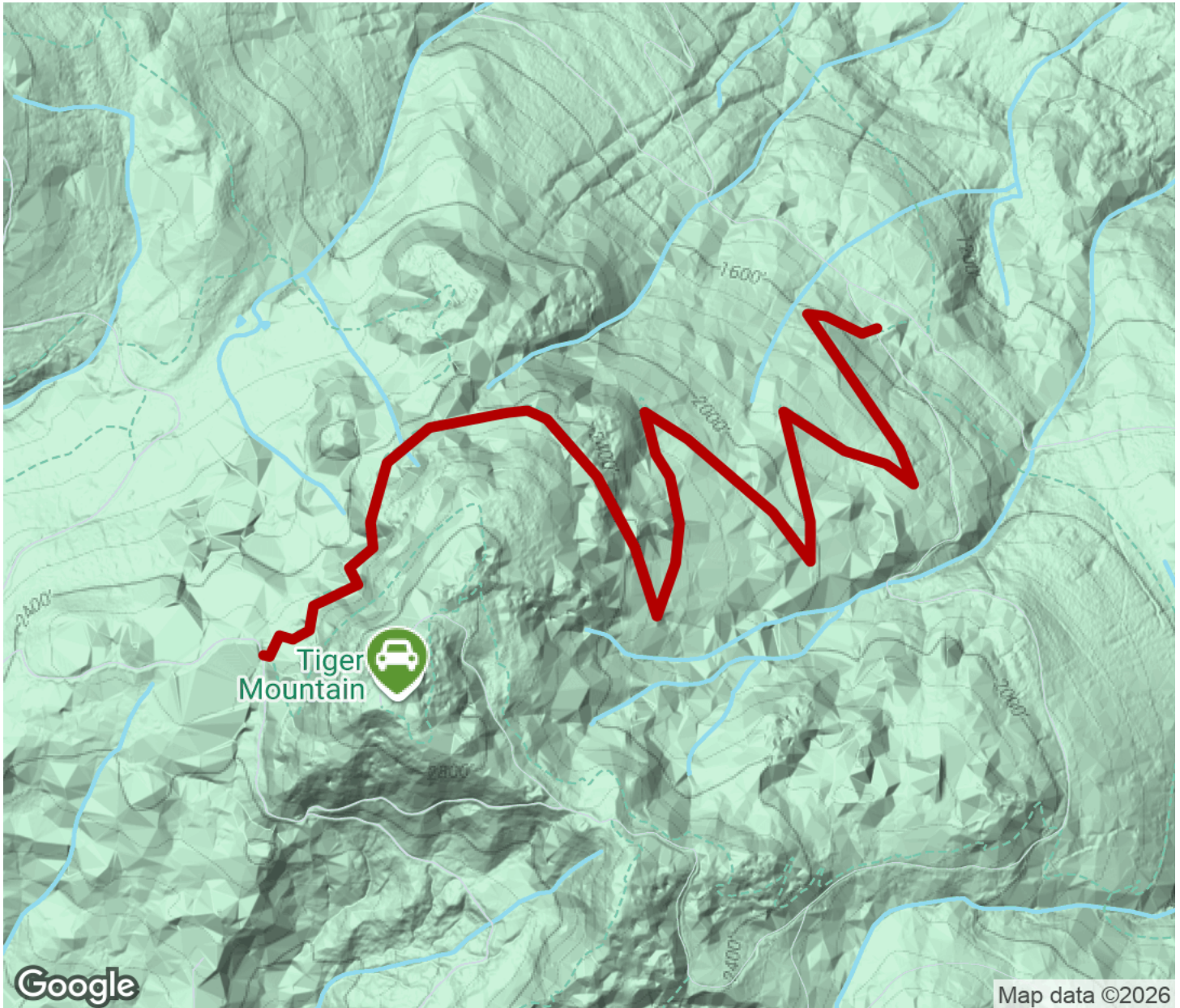
Parking for the Preston Railroad Trail is available at East Tiger Summit.

Note: Parking fees apply.



Preston Railroad Trail

Washington



Trailhead



Restroom



Parking



Water Fountain



Tunnel



TrailLink
by Rails-to-Trails Conservancy

TrailLink.com