



2024

TrailLink Unlimited



Guides



# Sumpter Valley Interpretive Trail

*Oregon*



## Sumpter Valley Interpretive Trail

Oregon

*The Sumpter Valley Interpretive Trail is a short hiking trail open on a portion of the historic Sumpter Valley Railway, which once*



The Sumpter Valley Interpretive Trail is a short hiking trail open on a portion of the historic Sumpter Valley Railway, which once linked Prairie City with Baker City. The trail, located approximately 8 miles east of Prairie City, overlooks the switchbacks the railroad used to descend into the John Day Valley. Interpretive signs line the trail, providing information on the history of the narrow-gauge railroad that once served the local lumber industry.



# Sumpter Valley Interpretive Trail

Oregon

**States:** Oregon

**Counties:** Grant

Length: 0.25miles

**Trail end points:** US 26 near Dixie Summit (8 miles east of Prairie City) to Malheur National Forest

**Trail surfaces:** Dirt

**Trail category:** Rail-Trail

**Trail activities:** Walking

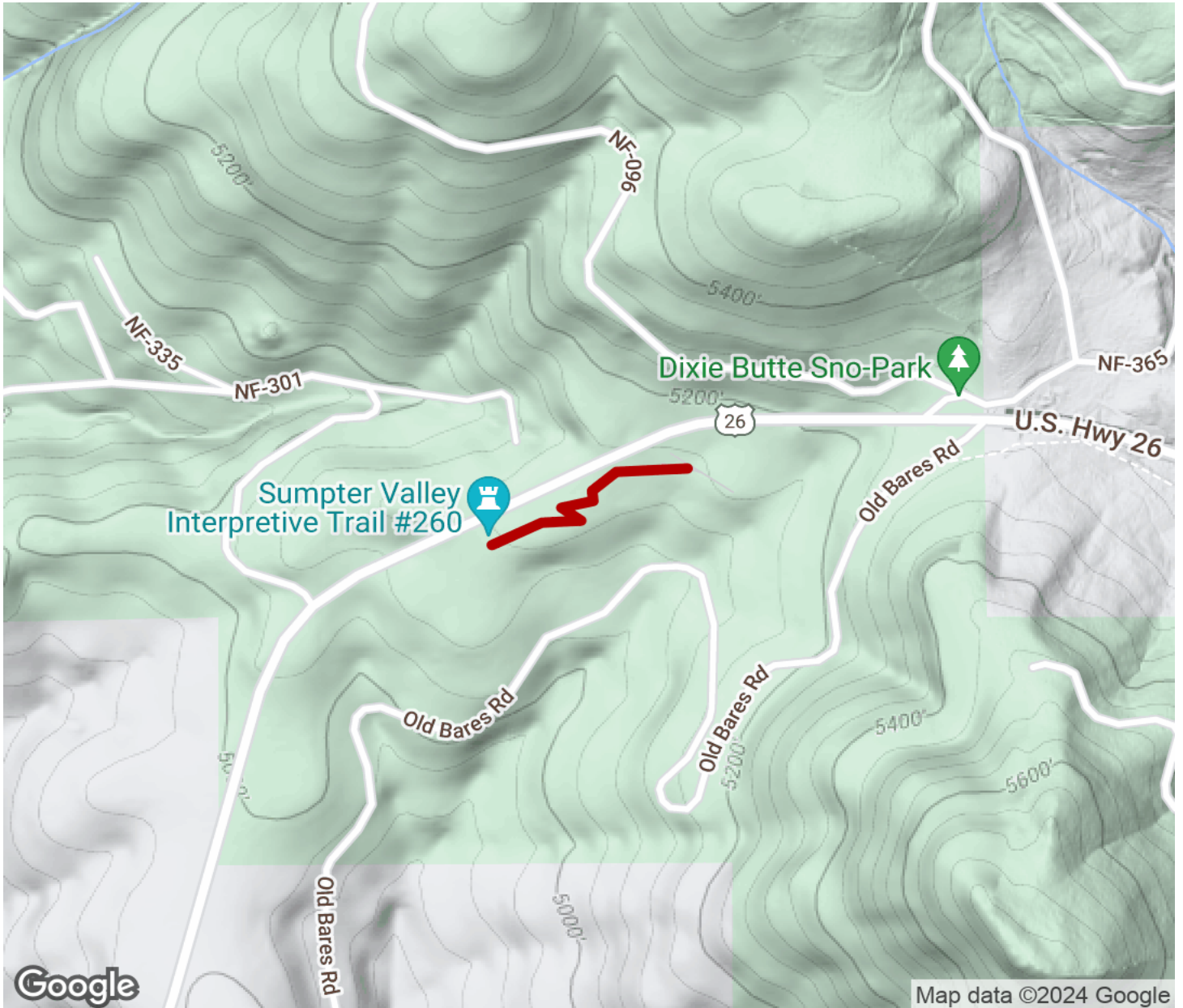
## Parking & Trail Access

The trailhead is located on US 26, approximately 8 miles east of Prairie City. A paved parking area is on the right side of the road shortly before Dixie Summit.



# Sumpter Valley Interpretive Trail

Oregon



Trailhead



Restroom



Parking



Water Fountain



Tunnel



**TrailLink**  
by Rails-to-Trails Conservancy

**TrailLink.com**