



2025

TrailLink Unlimited



Guides



City of Snoqualmie Centennial Trail

Washington



City of Snoqualmie Centennial Trail

Washington

Snoqualmie's half-mile, paved trail runs parallel to railroad tracks and SR 202 through downtown. The scenic trail provides a nice



Snoqualmie's half-mile, paved trail runs parallel to railroad tracks and SR 202 through downtown. The scenic trail provides a nice break for a short walk or ride. The city's trail also meets the [Snoqualmie Valley Trail](#), which provides over 31 additional miles of trail to enjoy. In addition, there is a train collection along the highway that ends at the old railroad depot, now the [Northwest Railway Museum](#). This is a must-see for any train lover or railroad history buff.



City of Snoqualmie Centennial Trail

Washington

States: Washington

Counties: King

Length: 0.5miles

Trail end points: SE 69th Pl. at Railroad Ave. to
Railroad Community Park (Snoqualmie)

Trail surfaces: Asphalt

Trail category: Rail-Trail

Trail activities: Bike, Inline

Skating, Walking, Wheelchair Accessible, Cross
Country Skiing

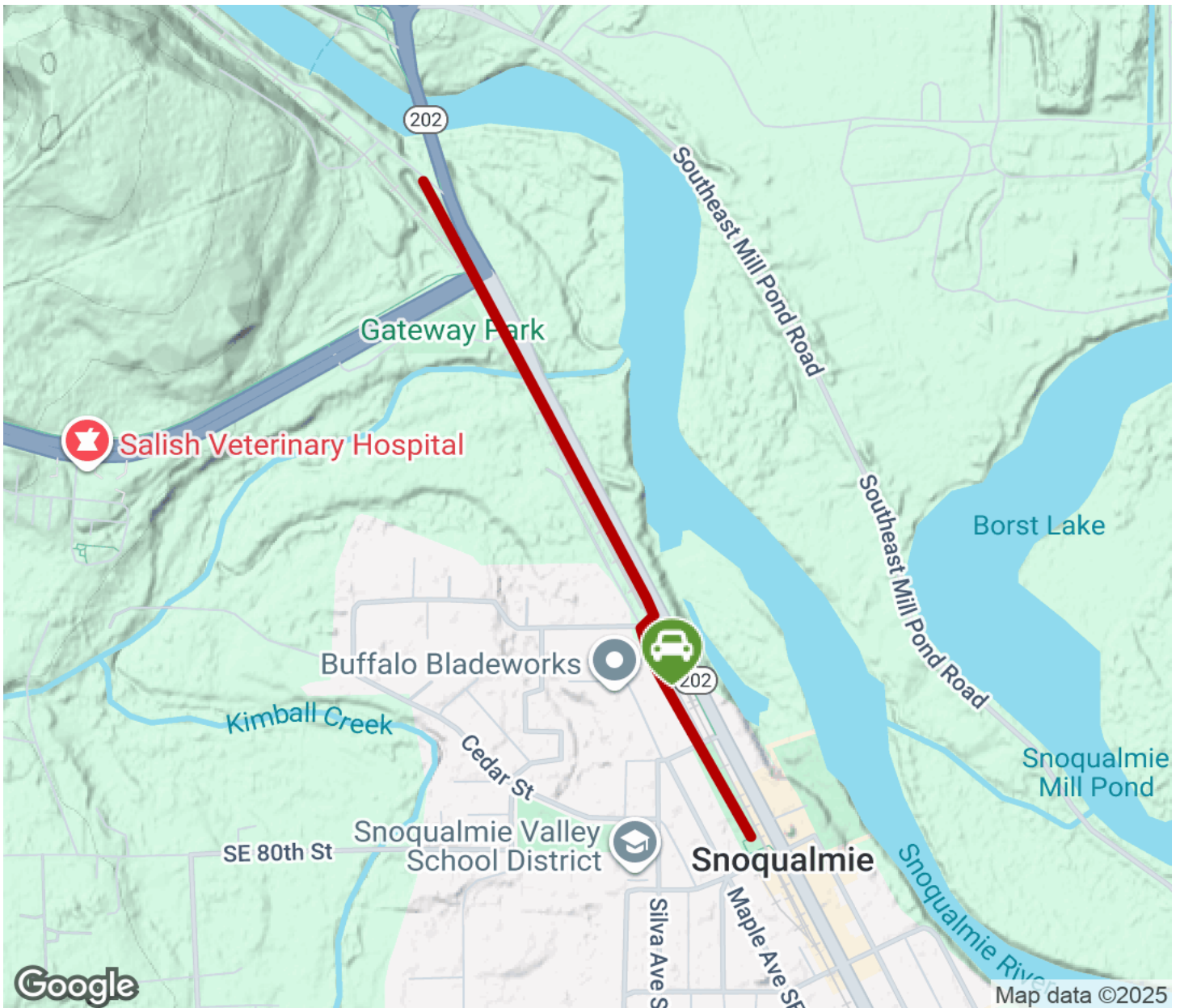
Parking & Trail Access

Park along Railroad Place SE between Northern St. and Fir St.



City of Snoqualmie Centennial Trail

Washington



Trailhead



Restroom



Parking



Water Fountain



Tunnel



TrailLink
by Rails-to-Trails Conservancy

TrailLink.com