



2024

TrailLink Unlimited



Guides



Colfax Trail

Washington



Colfax Trail

Washington

The Colfax Trail follows an abandoned rail corridor, which snakes along the river northwest of the town of Colfax. Along the way you'll



The Colfax Trail follows an abandoned rail corridor, which snakes along the river northwest of the town of Colfax. Along the way you'll likely see wildlife in the surrounding Palouse hills and the river bottom.



Colfax Trail

Washington

States: Washington

Counties: Whitman

Length: 3miles

Trail end points: W. River Drive (Colfax) to
river northwest of town

Trail surfaces: Dirt

Trail category: Rail-Trail

Trail activities: Horseback Riding, Mountain
Biking, Walking, Cross Country Skiing

Parking & Trail Access

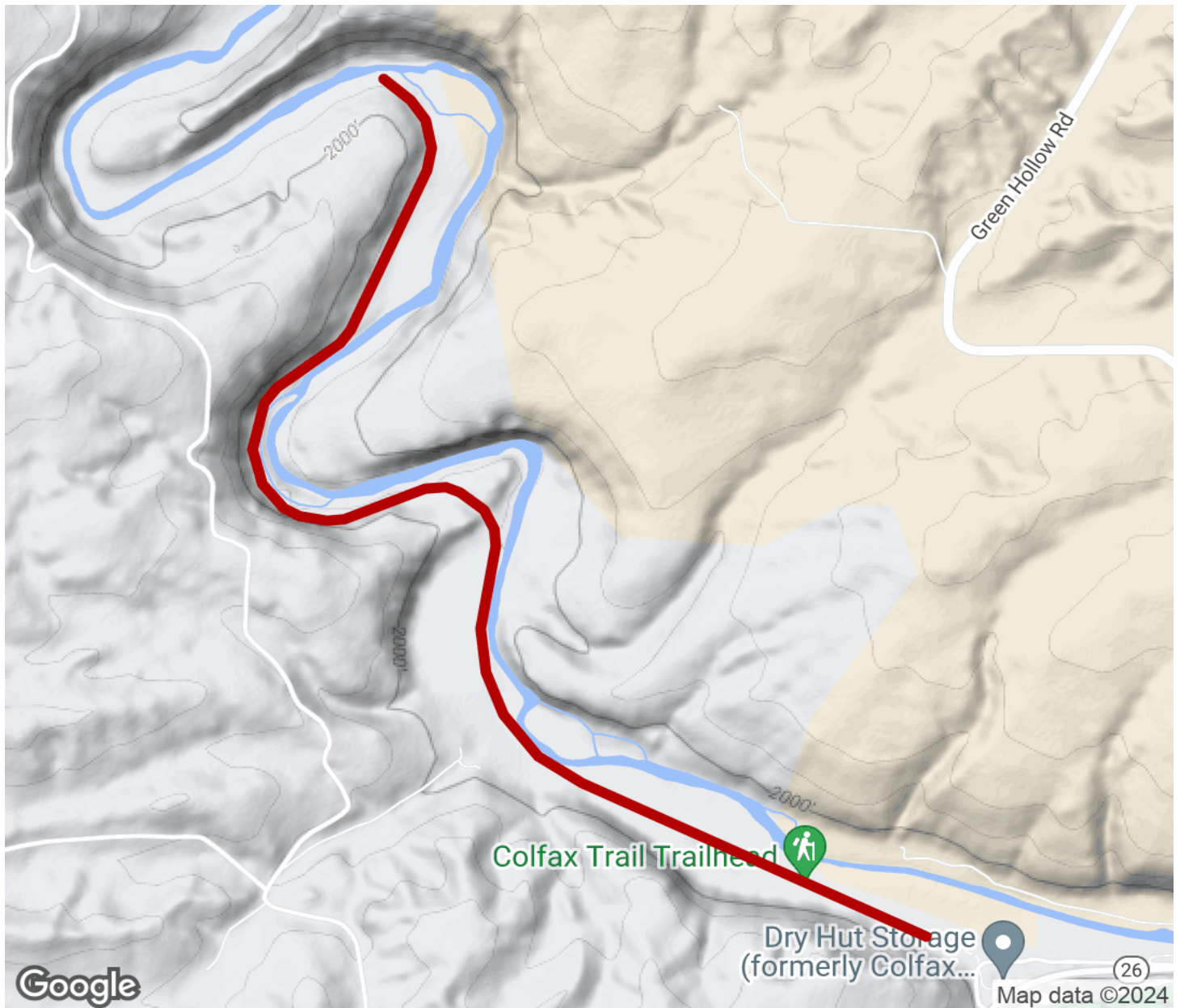
From town, take SR 26 (Walla Walla Highway) west and bear right on W. River Drive. Continue through the industrial site to the trailhead at the other end.

While dogs are allowed on the trail, they should remain leashed at all times.



Colfax Trail

Washington



Trailhead



Restroom



Parking



Water Fountain



Tunnel



TrailLink
by Rails-to-Trails Conservancy

TrailLink.com