



2025

TrailLink Unlimited 

Guides



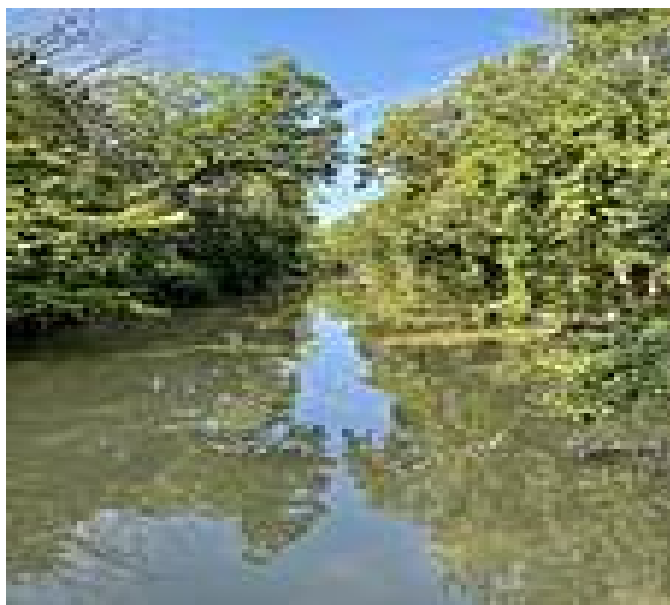
**Hines Park  
Trail/Rouge  
River Gateway**  
*Michigan*



# Hines Park Trail/Rouge River Gateway

Michigan

*This trail is actually composed of two trails: the 17.5-mile Hines Park Trail is the 2-mile Rouge River Gateway Greenway, which*



This trail is actually composed of two trails: the 17.5-mile Hines Park Trail is the 2-mile Rouge River Gateway Greenway, which creates a seamless 20-mile connection between Dearborn and Northville.

## About the Route

Starting at the Michigan Avenue trailhead in Dearborn, the Rouge River Gateway Greenway winds north through the University of Michigan–Dearborn campus for 2 miles. Just south is Henry Ford’s popular yesteryear tourist attraction, Greenfield Village, an 80-acre open-air

museum featuring seven historic districts covering 300 years of American life.

Heading north toward the university, the trail crosses the Lower Rouge River and Fair Lane Drive, where the historic Henry Ford Estate sits to the trail's left. The trail then runs along Fair Lane Drive and past the university and its affiliated environmental interpretive center, and then crosses the Rouge River again near Kingfisher Bluff—a bend in the river that is now a storm-water management project with an observation overlook and interpretive signage.

Crossing over Ford Road, the trail turns into the Hines Park Trail, which takes trail users 17.5 miles to Northville. Automotive history is not confined to Greenfield Village, as classic-car buffs tend to flock to Edward N. Hines Drive, which runs adjacent to the trail, for official and unofficial events; don’t be surprised to see Model T Fords and flashy cars of all vintages along this historic stretch of trail.

The trail travels through Wayne County’s linear Hines Park, which has a dog park and plentiful picnic facilities, gazebos, sports fields, exercise equipment, ponds, playgrounds, restrooms, and parking. Near the middle of the trail, just before reaching Ann Arbor Trail, is historic Nankin Mills, a gristmill turned natural and cultural interpretive center, which has indoor restrooms and tanks with local wildlife, such as turtles. Trail users can also rent bikes and Segways and purchase snacks at the private establishment next to the gristmill.



**TrailLink**  
by Rails-to-Trails Conservancy

**TrailLink.com**



# Hines Park Trail/Rogue River Gateway

*Michigan*

**States:** Michigan

**Counties:** Wayne

Length: 20miles

**Trail end points:** Michigan Ave. (Dearborn) to 7 mile Rd. (Northville)

**Trail surfaces:** Asphalt

**Trail category:** Greenway/Non-RT

**Trail activities:** Bike,Inline Skating,Walking

## Parking & Trail Access

The Hines Park Trail/Rogue River Gateway runs between Michigan Ave. (Dearborn) and 7 Mile Rd. (Northville), with parking available at either end.

Parking is also available at:

- Parkland Recreation Area, 6378-14366 Edward N Hines Dr. (Dearborn Heights)
- Nankin Mills Recreation Area, 33259-33325 Edward N Hines Dr. (Westland)
- 13352 Edward N Hines Dr. (Plymouth)

Please see [TrailLink Map](#) for all parking options and detailed directions.



# Hines Park Trail/Rouge River Gateway

Michigan



Trailhead



Restroom



Parking



Water Fountain



Tunnel



**TrailLink**  
by Rails-to-Trails Conservancy

**TrailLink.com**