



2025

TrailLink Unlimited 

Guides



## Grosse Ile Trail

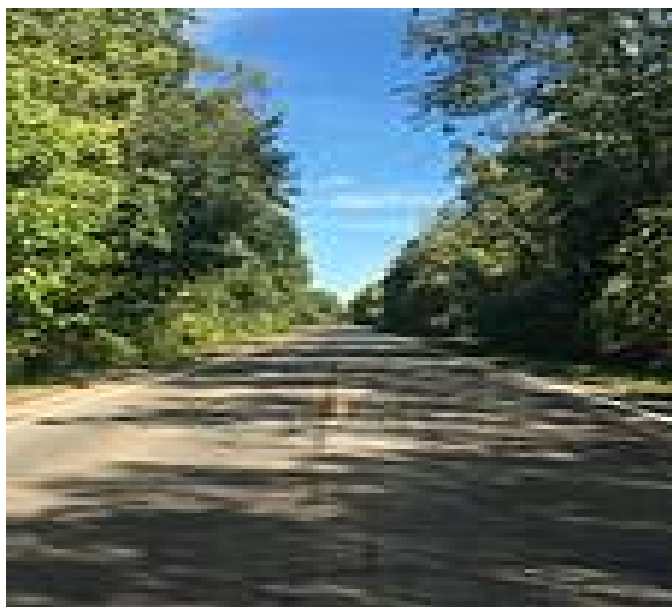
*Michigan*



## Grosse Ile Trail

Michigan

*The Grosse Ile Trail is a smooth, paved route running nearly the entire north–south length of Grosse Ile, which rests in the Detroit*



home to the island's sole rail line. Canada Southern Railway built the line to transport passengers and freight from Michigan to points east via a ferry from Stony Island to Ontario. Later, the Michigan Central Railroad operated a train on the line for residents and tourists between Grosse Ile and Trenton.

Trail users interested in railroad history will want to take the recommended on-road loop to see the Michigan Central train depot—now home to the Grosse Ile Historical Society Museum—at the intersection of E. River Road and Grosse Ile Parkway.

The Grosse Ile Trail is a smooth, paved route running nearly the entire north–south length of Grosse Ile, which rests in the Detroit River between mainland Michigan and Ontario, Canada. The trail primarily parallels Meridian Road, with portions on the southern end following Groh Road and South Pointe Drive.

Grosse Ile Township has long been considered a desirable place to live by Michigan's upper class, so the scenery along the trail primarily consists of kempt—and often lavish—homes. Cyclists looking for a longer journey and water views can complete a recommended loop via Horsemill Road and E. River Road.

While the Grosse Ile Trail is not a rail-trail, the path does cross Grosse Ile Parkway, which occupies a corridor once



# Grosse Ile Trail

*Michigan*

**States:** Michigan

**Counties:** Wayne

Length: 6.2miles

**Trail end points:** Meridian Rd. and Voigt Ave.  
to Groh Rd. and E. River Rd.; South Pointe Dr.  
and Boucher Rd.

**Trail surfaces:** Asphalt

**Trail category:** Greenway/Non-RT

**Trail activities:** Bike,Inline Skating,Walking

## Parking & Trail Access

Parking for the Grosse Ile Trail is available at Grosse Ile Township Hall (9601 Groh Road).



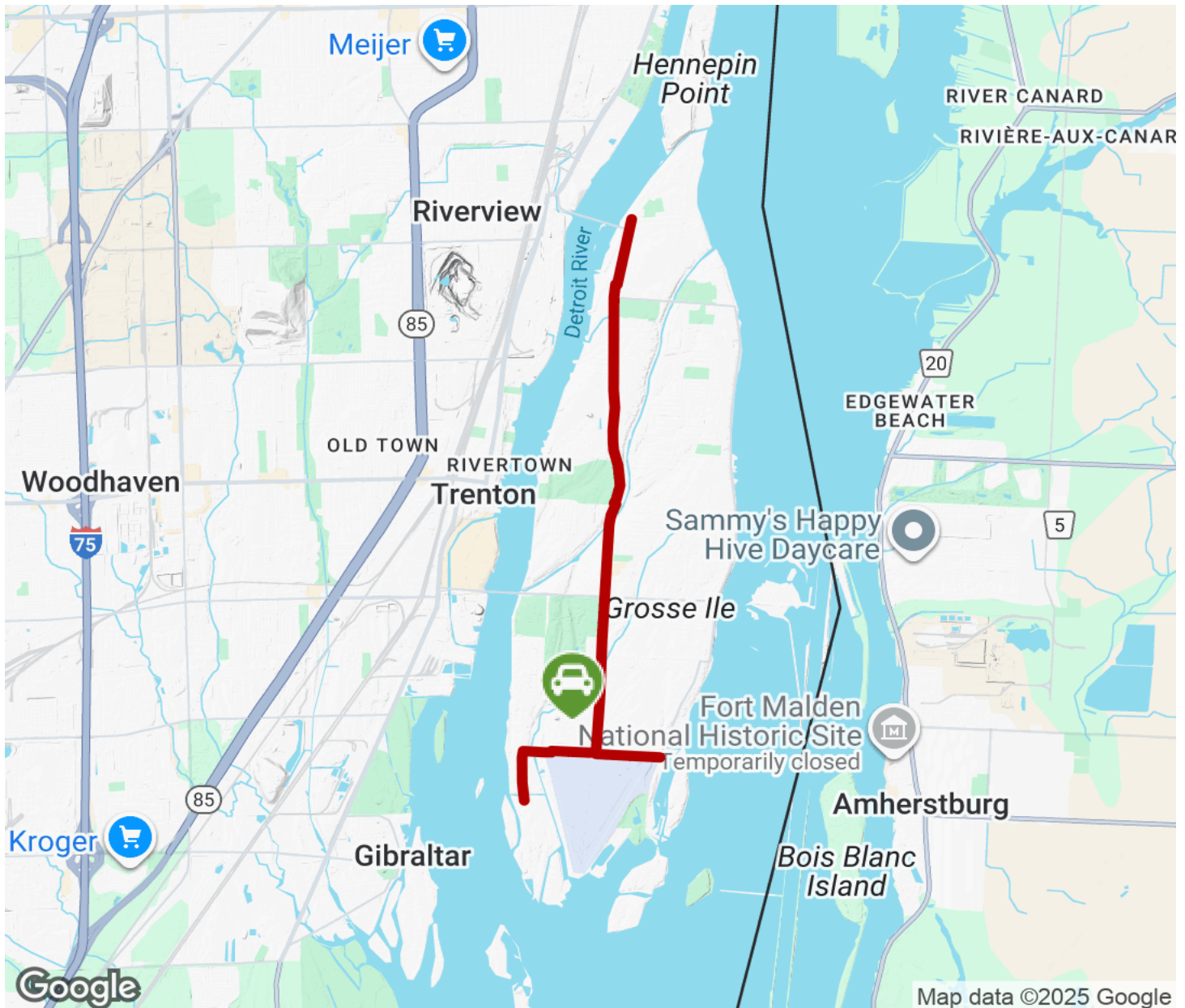
**TrailLink**  
by Rails-to-Trails Conservancy

**TrailLink.com**



# Grosse Ile Trail

Michigan



Trailhead



Restroom



Parking



Water Fountain



Tunnel



**TrailLink**  
by Rails-to-Trails Conservancy

**TrailLink.com**