



2024

TrailLink Unlimited



Guides



Salisbury Point Ghost Trail

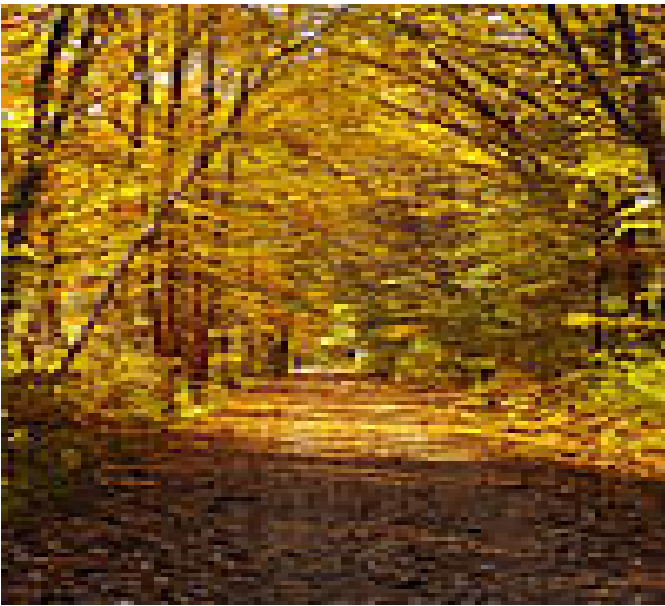
Massachusetts



Salisbury Point Ghost Trail

Massachusetts

Overview Currently just over two miles long, the Salisbury Point Ghost Trail provides a peaceful journey through the woods. About



which has a variety of sports fields and courts, a playground, picnic tables, restrooms, and parking.

Connections

The route is one part of the larger Coastal Trails Network of rail-trails linking the coastal towns of Amesbury, Salisbury, Newburyport and Newbury.

Trail History

Sharing railroad history with the [Amesbury Riverwalk](#), the Salisbury Point Ghost Trail got its name because the train cars transported carriages and early auto bodies covered with white muslin shrouds. The trains passed through Salisbury with their "ghostly" freight on their way to Boston, Detroit and New York. Passenger service was also popular on the Salisbury rail line, and people could travel throughout New England, or even make a transcontinental journey from Salisbury. In 1936 passenger service was discontinued.

Overview

Currently just over two miles long, the Salisbury Point Ghost Trail provides a peaceful journey through the woods.

About the Route

From its western end on Elm Street in Amesbury, the trail heads east and crosses under I-95 via a highway underpass. Continuing east, the trail enters Salisbury and crosses Rabbit Road. The trail is paved between Elm Street and Rabbit Road, where it becomes a well-maintained stone-dust trail.

The trail heads east through Salisbury to Lions Park,



Salisbury Point Ghost Trail

Massachusetts

States: Massachusetts

Counties: Essex

Length: 2.2miles

Trail end points: Elm St (Amesbury) to Lions Park (Salisbury)

Trail surfaces: Asphalt, Crushed Stone

Trail category: Rail-Trail

Trail activities: Bike, Wheelchair Accessible, Mountain Biking, Walking

Parking & Trail Access

The Salisbury Point Ghost Trail runs between Elm St (Amesbury) and Lions Park (Salisbury). Access the trail from three convenient parking areas:

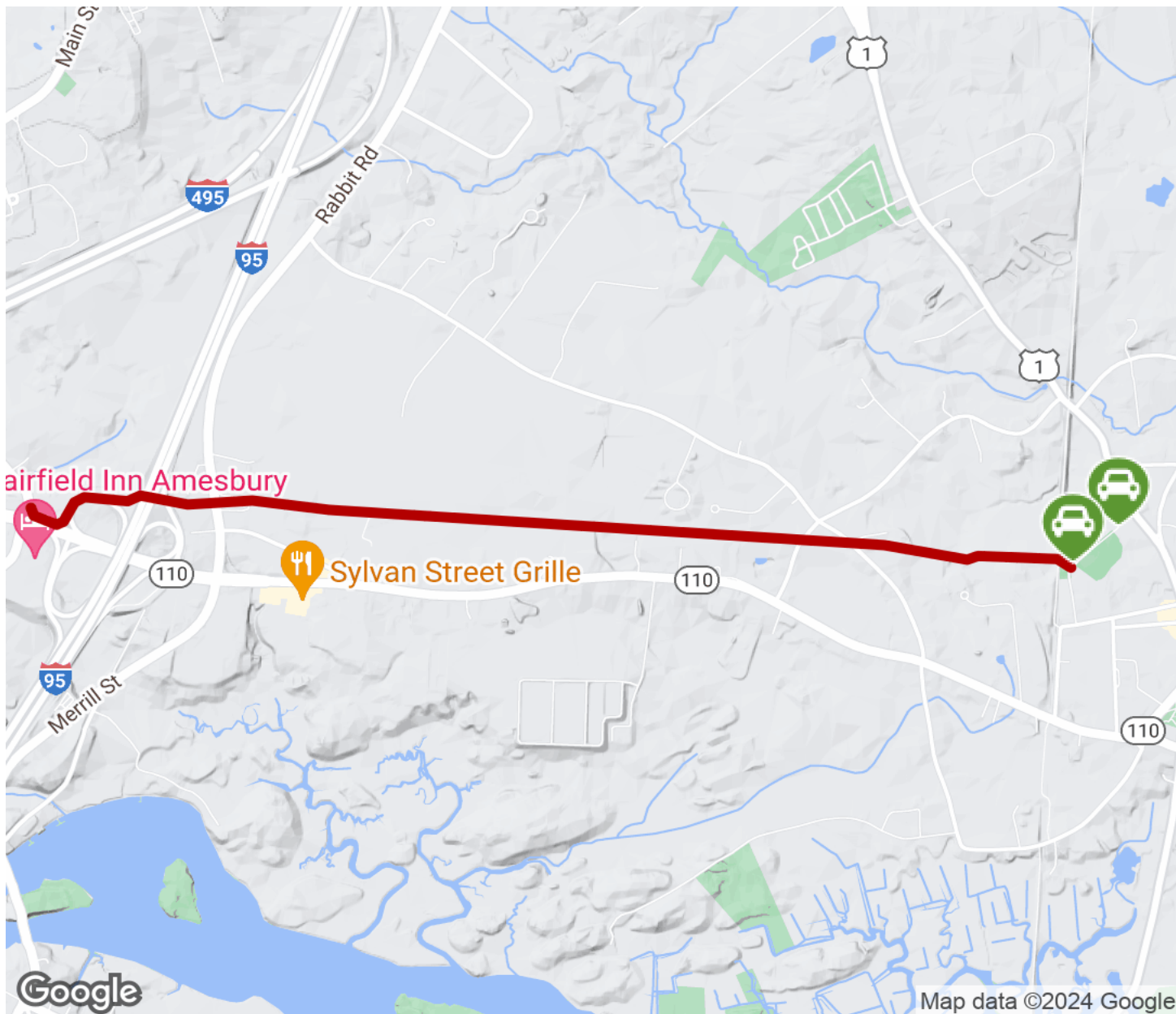
- Rabbit Road Trailhead (Rabbit Rd, Salisbury)
- Bartlett Street Trailhead (Bartlett St, Salisbury)
- Lion's Park Trailhead (Lions Way, Salisbury)

Visit the [TrailLink map](#) for detailed directions.



Salisbury Point Ghost Trail

Massachusetts



Trailhead



Restroom



Parking



Water Fountain



Tunnel



TrailLink
by Rails-to-Trails Conservancy

TrailLink.com