



2025

TrailLink Unlimited 

Guides



## Salisbury Point Ghost Trail

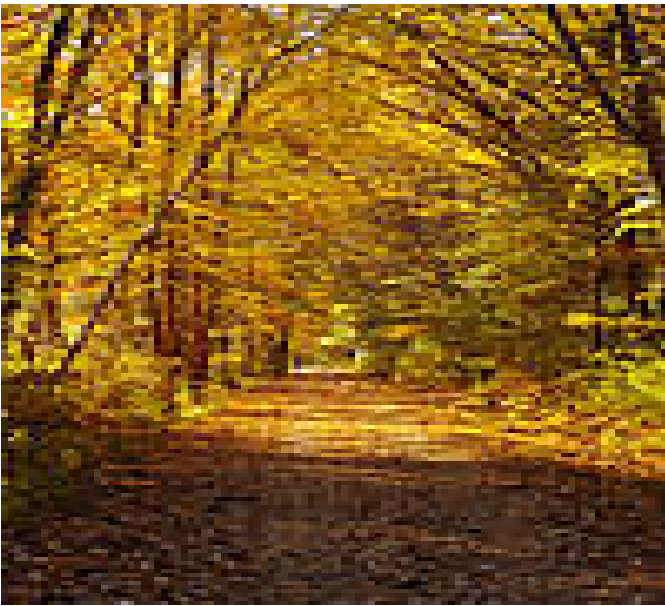
*Massachusetts*



## Salisbury Point Ghost Trail

Massachusetts

*Currently just over two miles long, the Salisbury Point Ghost Trail provides a peaceful journey through the woods. About the Route*



### Connections

The route is one part of the larger Coastal Trails Network of rail-trails linking the coastal towns of Amesbury, Salisbury, Newburyport and Newbury.

### Trail History

Sharing railroad history with the [Amesbury Riverwalk](#), the Salisbury Point Ghost Trail got its name because the train cars transported carriages and early auto bodies covered with white muslin shrouds. The trains passed through Salisbury with their "ghostly" freight on their way to Boston, Detroit and New York. Passenger service was also popular on the Salisbury rail line, and people could travel throughout New England, or even make a transcontinental journey from Salisbury. In 1936 passenger service was discontinued.

Currently just over two miles long, the Salisbury Point Ghost Trail provides a peaceful journey through the woods.

### About the Route

From its western end on Elm Street in Amesbury, the trail heads east and crosses under I-95 via a highway underpass. Continuing east, the trail enters Salisbury and crosses Rabbit Road. The trail is paved between Elm Street and Rabbit Road, where it becomes a well-maintained stone-dust trail.

The trail heads east through Salisbury to Lions Park, which has a variety of sports fields and courts, a playground, picnic tables, restrooms, and parking.



# Salisbury Point Ghost Trail

*Massachusetts*

**States:** Massachusetts

**Counties:** Essex

Length: 2.2miles

**Trail end points:** Elm St (Amesbury) to Lions Park (Salisbury)

**Trail surfaces:** Asphalt, Crushed Stone

**Trail category:** Rail-Trail

**Trail activities:** Bike, Wheelchair Accessible, Mountain Biking, Walking

## Parking & Trail Access

The Salisbury Point Ghost Trail runs between Elm St (Amesbury) and Lion's Park (Salisbury), where there is parking.

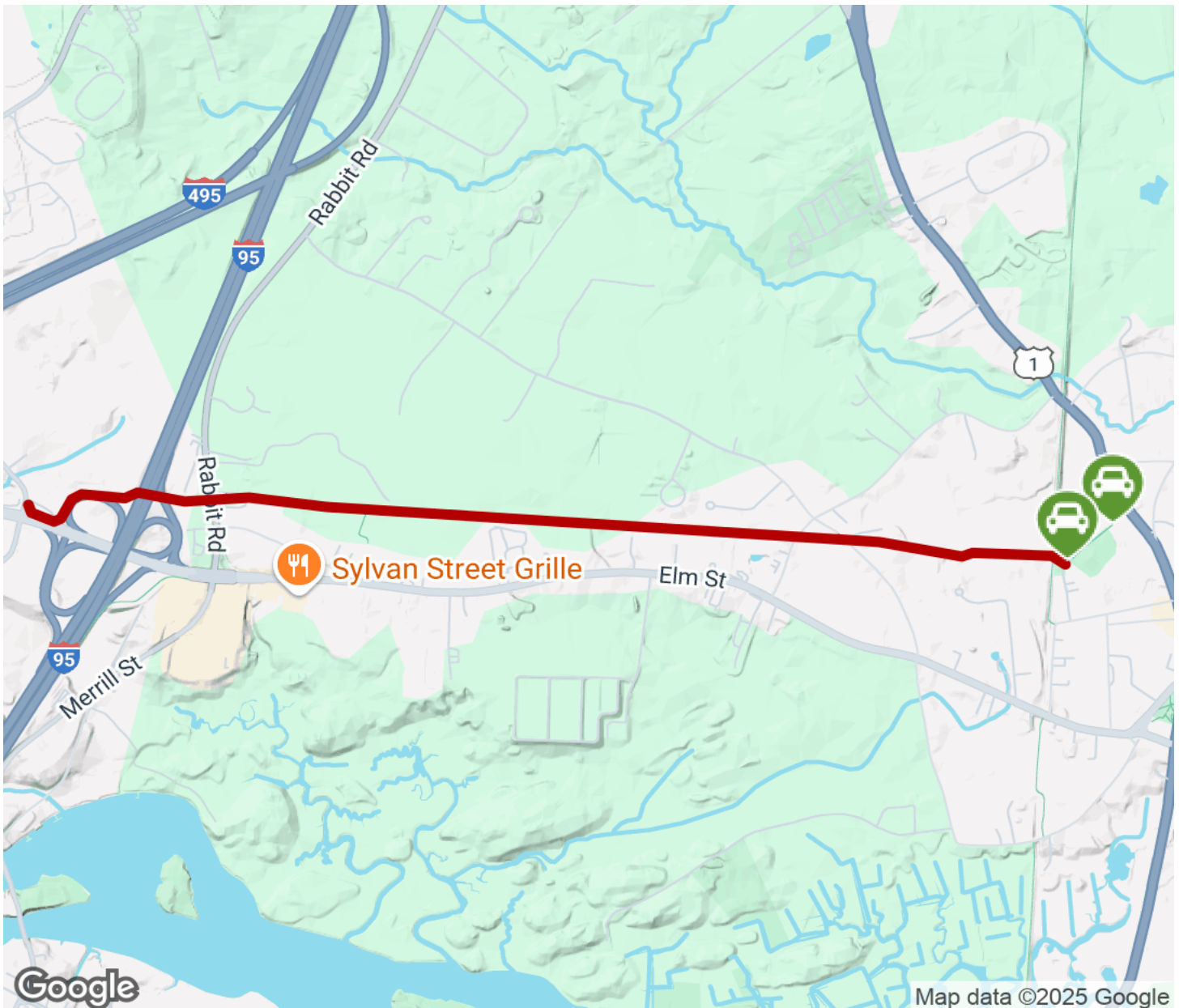
- Rabbit Road Trailhead, Rabbit Rd (Salisbury)
- Bartlett Street Trailhead, Bartlett St (Salisbury)

These are not official addresses, visit the [TrailLink map](#) for more detailed directions.



# Salisbury Point Ghost Trail

Massachusetts



Map data ©2025 Google



Trailhead



Restroom



Parking



Water Fountain



Tunnel



**TrailLink**  
by Rails-to-Trails Conservancy

**TrailLink.com**