



2025

TrailLink Unlimited 

Guides   



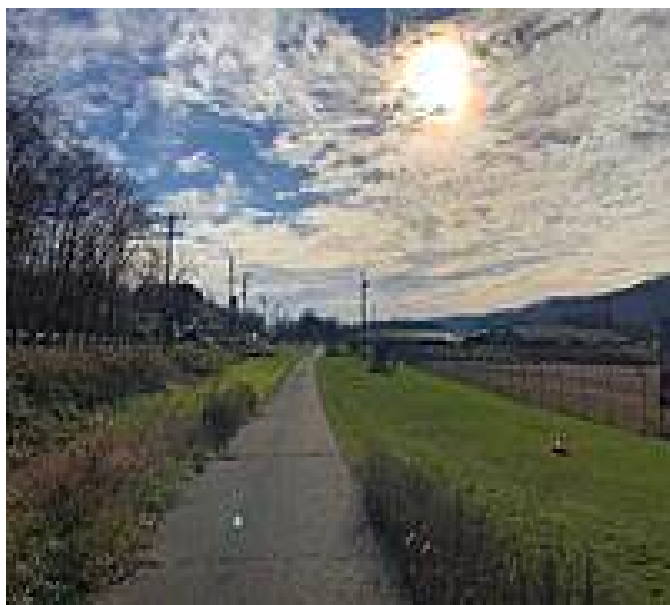
**Brooke
Pioneer Trail**
West Virginia



Brooke Pioneer Trail

West Virginia

Overview The Brooke Pioneer Trail rolls along the woodsy eastern bank of the Ohio River, a waterway that once carried early settlers'



Overview

The Brooke Pioneer Trail rolls along the woodsy eastern bank of the Ohio River, a waterway that once carried early settlers' flatboats to lands in the west. The trail provides access to the bridge's shared-used path that will carry walkers and bicyclists westward into Ohio.

About the Route

The paved trail runs for 6.7 miles between the southern city limits of Wellsburg and the Ohio County line at Short Creek, where it meets the [Wheeling Heritage Trails](#). Both trails are paved and provide 18 miles of scenic walking or bicycling along the Ohio River.

The northern end of the trail begins at the southern limits of Wellsburg and the southern terminus of the 2.2-mile [Wellsburg Yankee Trail](#) that passes through downtown. Continuing south from Wellsburg, you'll cross Buffalo Creek on a restored railroad trestle paralleling WV 2.

In about a mile, you'll come to the Wellsburg Bridge, which opened in September 2023. There is a connector from the trail to the bridge, which has a shared-use path for pedestrians and cyclists. The bridge leads to Brilliant, Ohio on the northwest side of the river.

The trail is wedged between WV 2 and the Ohio River for its entire length. The mostly wooded corridor obscures the view of both the road and the river, though occasional openings reveal vistas of the powerful river and the hilly western shore. The woods are home to deer, ground-hogs, and other critters.

The southern end of the trail is at a pedestrian bridge over Short Creek, where the route seamlessly continues south as the [Wheeling Heritage Trails](#).

There are pit toilets at Ruby Park (south of Beech Bottom) and at Ironmen Park (at Short Creek Rd). Please note that there may not be toilet paper available.

Connections

At its northern end, the Brooke Pioneer Trail connects to the southern terminus of the 2.2-mile [Wellsburg Yankee Trail](#). At its southern end, the Brooke Pioneer Trail connects seamlessly to the [Wheeling Heritage Trails](#).

Trail History

History buffs will be interested to learn that human habitation along the river dates back thousands of years. Scientists excavating an earthen mound in the town of Beech Bottom, about 3.5 miles south of Wellsburg, found artifacts dating to



Brooke Pioneer Trail

West Virginia

States: West Virginia

Counties: Brooke

Length: 6.7miles

Trail end points: Charles St & 2nd St
(Wellsburg) to Wheeling Heritage Trails at
Warwood Ave/WV 2 & Stone Shannon (Short
Creek)

Trail surfaces: Asphalt

Trail category: Rail-Trail

Trail activities: Bike,Inline
Skating,Fishing,Wheelchair

Parking & Trail Access

The Brooke Pioneer Trail runs between Charles St & 2nd St (Wellsburg) and the Wheeling Heritage Trails at Warwood Ave/WV 2 & Stone Shannon (Short Creek).

In Wellsburg, park just south of the trestle off SR 2 south of town, beside a gas station. Limited parking is also available just off the trail in Beech Bottom (WV 2 & Carolina Ave).

In Windsor Heights, park just south of the bridge off SR 2 at Stone Shannon Road. Use caution when crossing the highway to access the trail.

In Short Creek, parking is available by Ironmen Park (west side of WV 2 at Short Creek Road/CR 2/2).

Visit the [TrailLink map](#) for detailed directions.



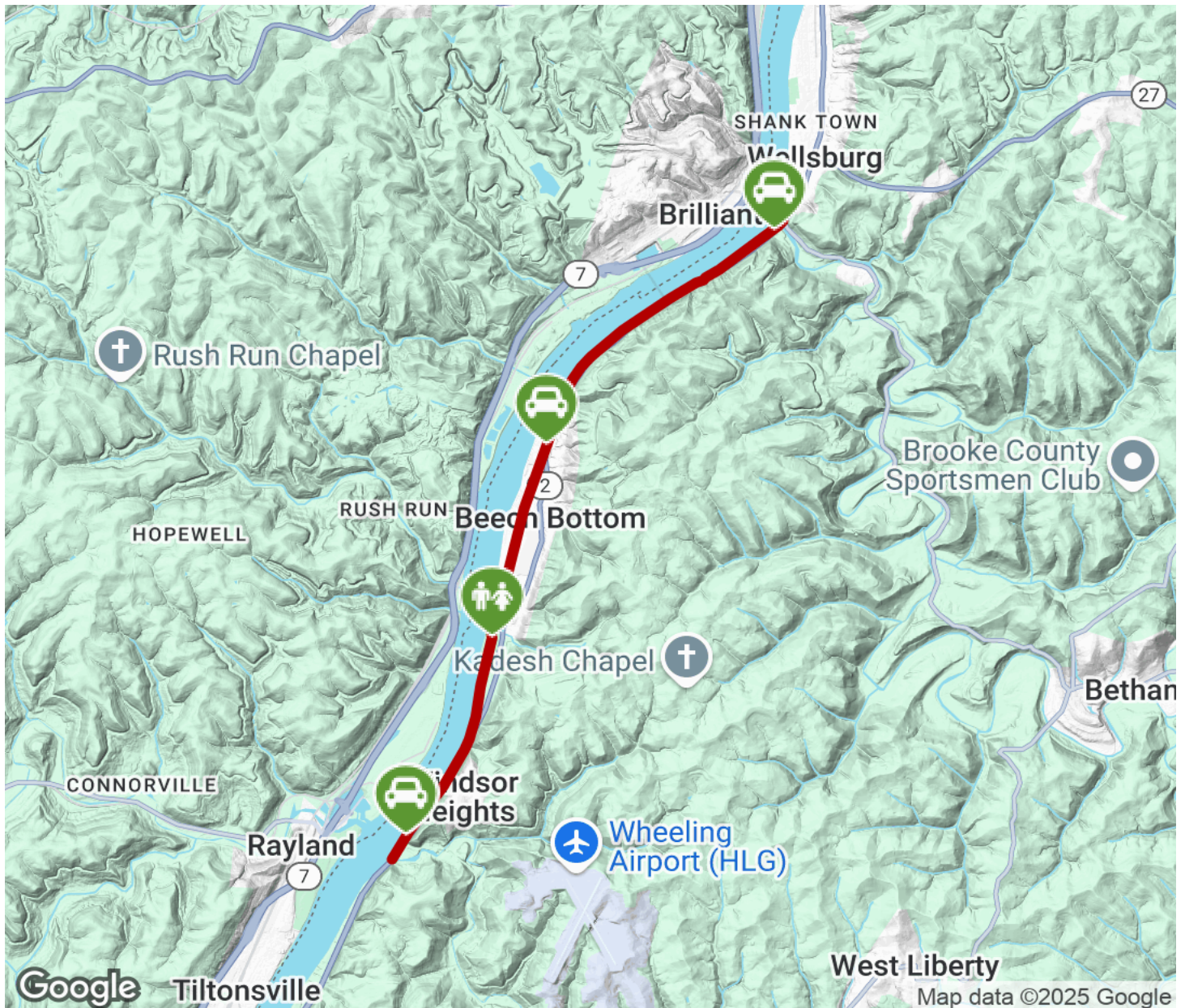
TrailLink
by Rails-to-Trails Conservancy

TrailLink.com



Brooke Pioneer Trail

West Virginia



Trailhead



Restroom



Parking



Water Fountain



Tunnel



TrailLink
by Rails-to-Trails Conservancy

TrailLink.com