



2025

TrailLink Unlimited



Guides



**Blackford  
Pedestrian  
Bridge**  
*Kentucky*



## Blackford Pedestrian Bridge

Kentucky

*The Blackford Pedestrian Bridge qualifies as a rail-trail because it crosses a refurbished railroad bridge over the Tradewater River,*



The Blackford Pedestrian Bridge qualifies as a rail-trail because it crosses a refurbished railroad bridge over the Tradewater River, linking Blackford, in Webster County with Crittenden County. The trail is just under 1 mile long and is locally known as Veteran's Memorial Bridge to honor Korean War POW/MIA PFC Thomas R. Robertson. From the bridge you get scenic views above the river.



**TrailLink**  
by Rails-to-Trails Conservancy

**TrailLink.com**



# Blackford Pedestrian Bridge

*Kentucky*

**States:** Kentucky

**Counties:** Crittenden, Webster

Length: 0.9 miles

**Trail end points:** Crittenden County to  
Blackford Sullivan Rd. (Webster County)

**Trail surfaces:** Asphalt

**Trail category:** Rail-Trail

**Trail activities:** Bike, Fishing, Horseback  
Riding, Inline Skating, Walking, Wheelchair  
Accessible

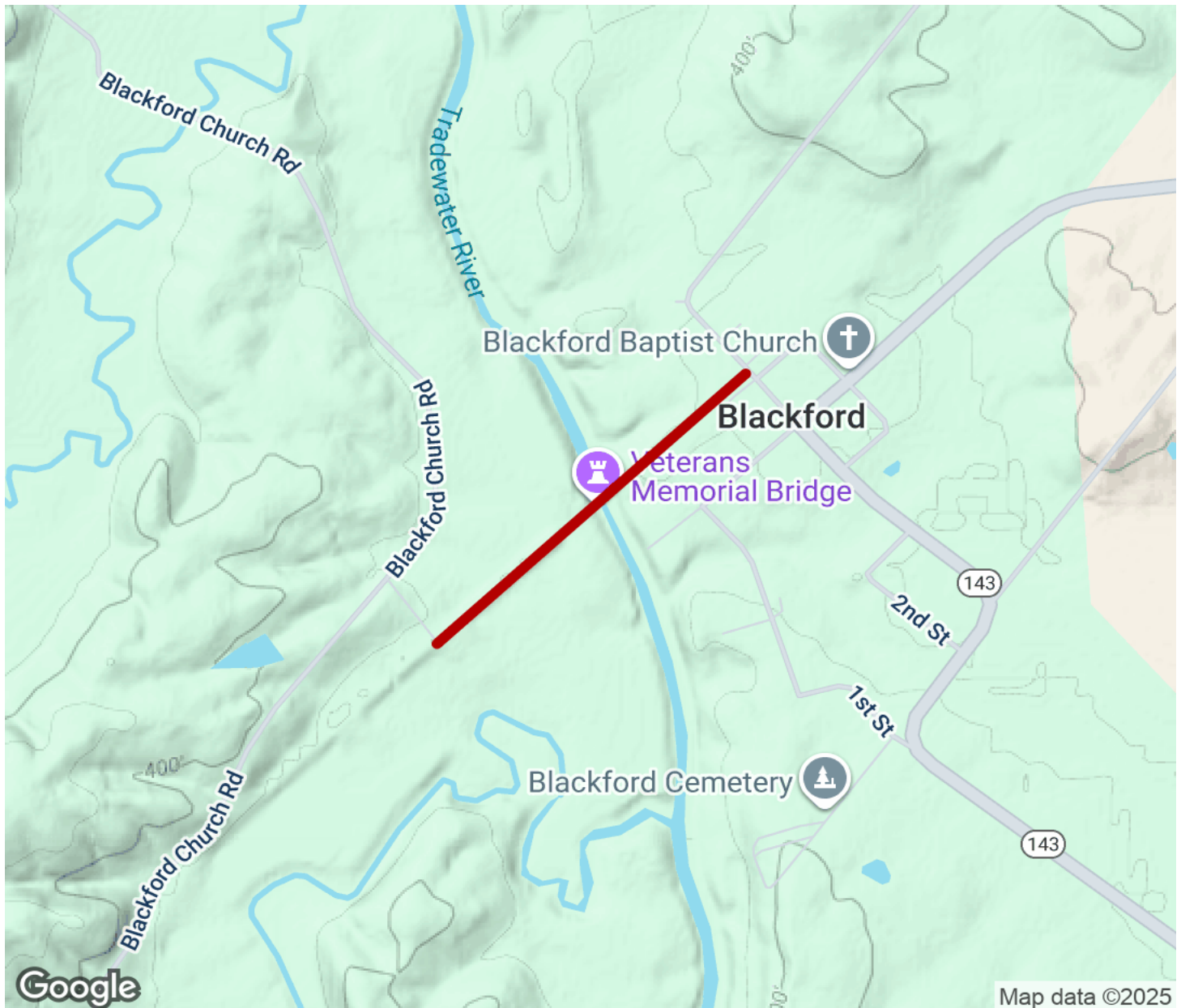
## Parking & Trail Access

Street parking is available in Blackford.



# Blackford Pedestrian Bridge

Kentucky



Trailhead



Restroom



Parking



Water Fountain



Tunnel



**TrailLink**  
by Rails-to-Trails Conservancy

**TrailLink.com**