



2026

TrailLink Unlimited 

Guides



**Blackford
Pedestrian
Bridge**
Kentucky



Blackford Pedestrian Bridge

Kentucky

The Blackford Pedestrian Bridge qualifies as a rail-trail because it crosses a refurbished railroad bridge over the Tradewater River,



The Blackford Pedestrian Bridge qualifies as a rail-trail because it crosses a refurbished railroad bridge over the Tradewater River, linking Blackford, in Webster County with Crittenden County. The trail is just under 1 mile long and is locally known as Veteran's Memorial Bridge to honor Korean War POW/MIA PFC Thomas R. Robertson. From the bridge you get scenic views above the river.



TrailLink
by Rails-to-Trails Conservancy

TrailLink.com



Blackford Pedestrian Bridge

Kentucky

States: Kentucky

Counties: Crittenden, Webster

Length: 0.9 miles

Trail end points: Crittenden County to
Blackford Sullivan Rd. (Webster County)

Trail surfaces: Asphalt

Trail category: Rail-Trail

Trail activities: Bike, Fishing, Horseback
Riding, Inline Skating, Walking, Wheelchair
Accessible

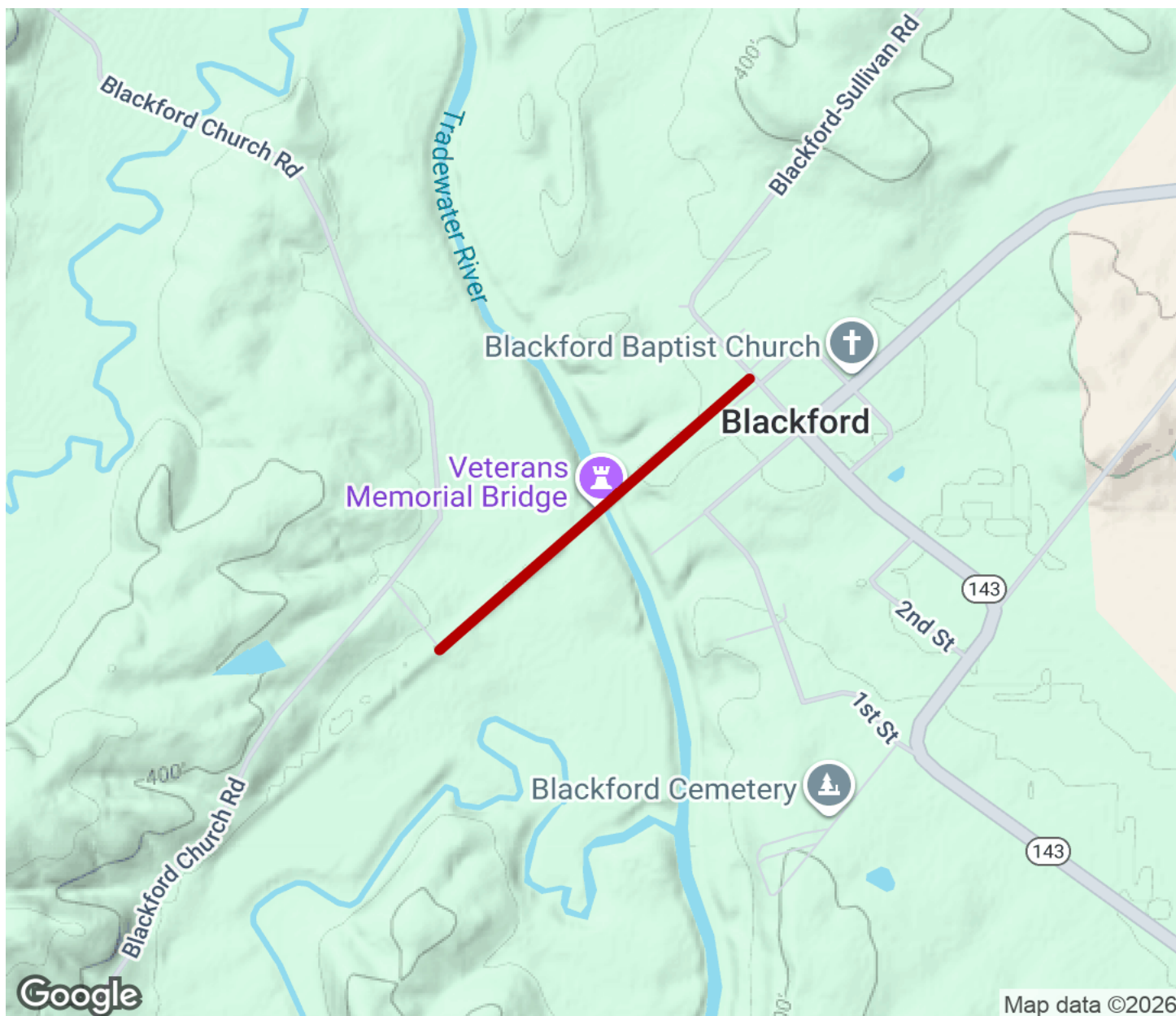
Parking & Trail Access

Street parking is available in Blackford.



Blackford Pedestrian Bridge

Kentucky



Trailhead



Restroom



Parking



Water Fountain



Tunnel



TrailLink
by Rails-to-Trails Conservancy

TrailLink.com