



2025

TrailLink Unlimited



Guides



Painted Post Trail

New York



Painted Post Trail

New York

If you are near Corning, New York, and need a nice walk, check out this charming respite. The Painted Post Trail connects schools,



A restored railroad depot sits along the trail near Steuben Street. It serves as a railroad museum staffed by volunteers. After crossing Steuben Street the trail skirts the High Street Cemetery. A bridge takes you over a small creek, then the trail goes under Interstate 86 and ends at the intersection of Western Lane and Cutler Avenue.

The Painted Post Trail is a vital part of the community. Many events are held along the trail throughout the year, including the well-known Wine Glass Marathon, which has been taking place for several decades.

If you are near Corning, New York, and need a nice walk, check out this charming respite. The Painted Post Trail connects schools, playgrounds, other trails and residential neighborhoods west of Corning. The wide right-of-way (nearly 100 feet) accommodates the trail's interesting design: instead of following the straight line of the railroad track, the trail gently weaves through a grassy park setting.

The trail begins just past the community swimming pool in Craig Park, named for former village Mayor Charles Craig. The park has basketball and tennis courts, a sand volleyball court, a skateboard park and numerous picnic tables and grills. The rail-trail passes some homes before shooting through an underpass of the combination Victory Highway and New York Route 415.



Painted Post Trail

New York

States: New York

Counties: Steuben

Length: 1.1miles

Trail end points: Craig Park to Cutler Ave. at Western Ln.

Trail surfaces: Asphalt

Trail category: Rail-Trail

Trail activities: Bike,Inline

Skating,Wheelchair Accessible,Walking,Cross Country Skiing

Parking & Trail Access

To reach the trailhead in Craig Park from I-86, take Route 15 to Exit 43 on the west side of Corning. Exit east onto High Street (toward Corning and Painted Post). Pass West High School and turn right immediately onto a drive that leads into Craig Park. Follow the road past the swimming pool, through the parking area and to the trailhead.



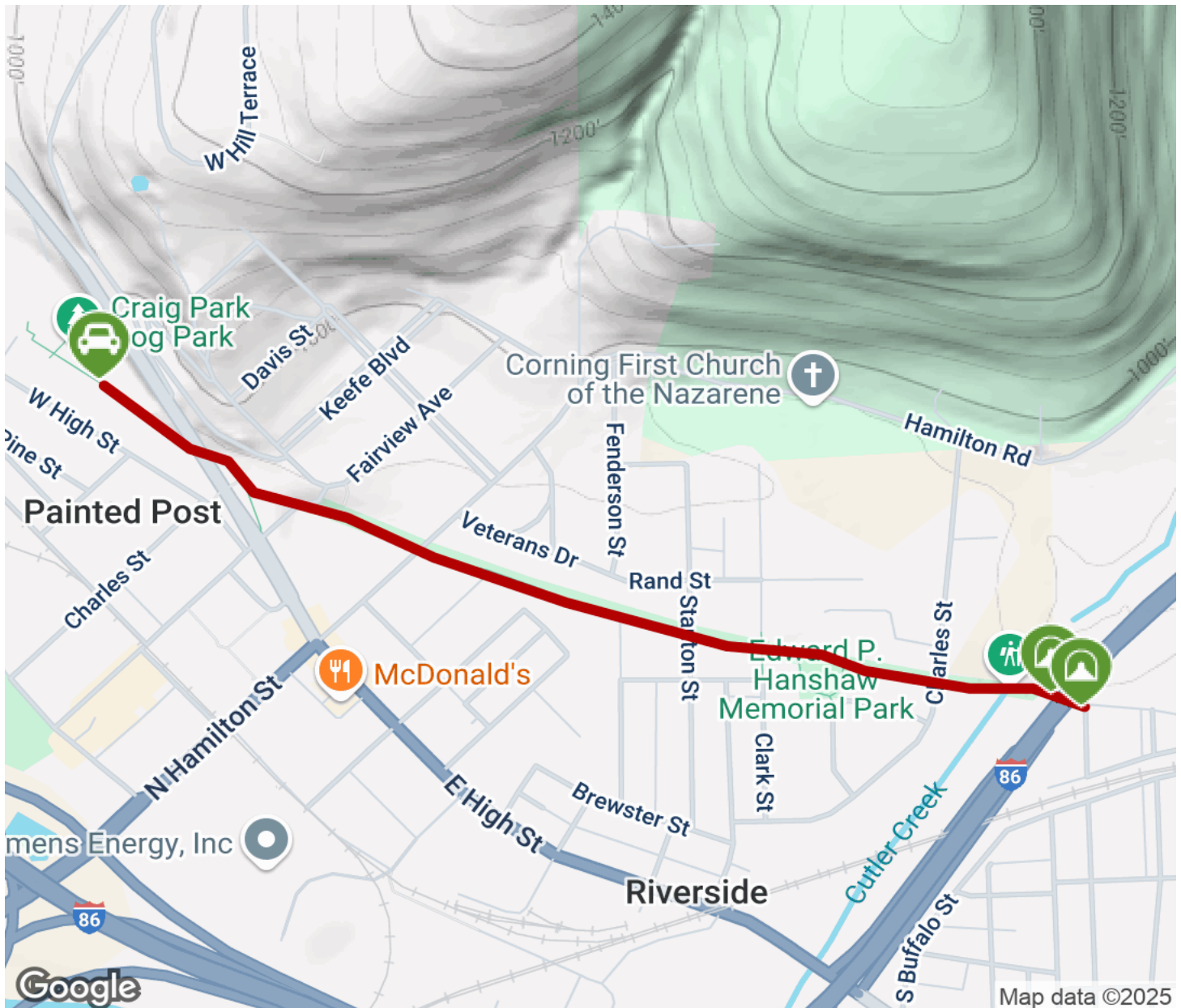
TrailLink
by Rails-to-Trails Conservancy

TrailLink.com



Painted Post Trail

New York



Trailhead



Restroom



Parking



Water Fountain



Tunnel



TrailLink
by Rails-to-Trails Conservancy

TrailLink.com