



2026

TrailLink Unlimited 

Guides



**Old Town
Creek Trail**
Ohio



Old Town Creek Trail

Ohio

The Old Town Creek Trail is a short but scenic pathway in Logan, the gateway to the Hocking Hills region of southeast Ohio. The trail



picks up an old railroad grade. The historic aqueduct arch bridge visible from the pathway makes for an awesome entrance to the final short stretch of trail, which ends abruptly along the creek at an active railroad line.

The Old Town Creek Trail is a short but scenic pathway in Logan, the gateway to the Hocking Hills region of southeast Ohio. The trail links the county fairgrounds not far from Logan's downtown to Aqueduct Park along Front Street.

Extending south from the fairgrounds along a crushed gravel surface, the trail travels just over 0.3 mile through the Old Town Creek Preserve, 56 acres of woodlands that were protected as part of this trail development. The gravel trail turns into an asphalt trail after crossing Front Street south of the restored Old Town Creek Bridge.

The paved trail segment extends just 0.2 mile along Front Street to the parking lot and entrance to Aqueduct Park. There the trail turns south on a grassy ballast surface as it



TrailLink
by Rails-to-Trails Conservancy

TrailLink.com



Old Town Creek Trail

Ohio

States: Ohio

Counties: Hocking

Length: 1miles

Trail end points: Hocking County Fairgrounds on California Ave. to Aqueduct Park on E. Front St.

Trail surfaces: Asphalt,Crushed Stone

Trail category: Rail-Trail

Trail activities: Bike,Mountain

Biking,Walking,Wheelchair Accessible

Parking & Trail Access

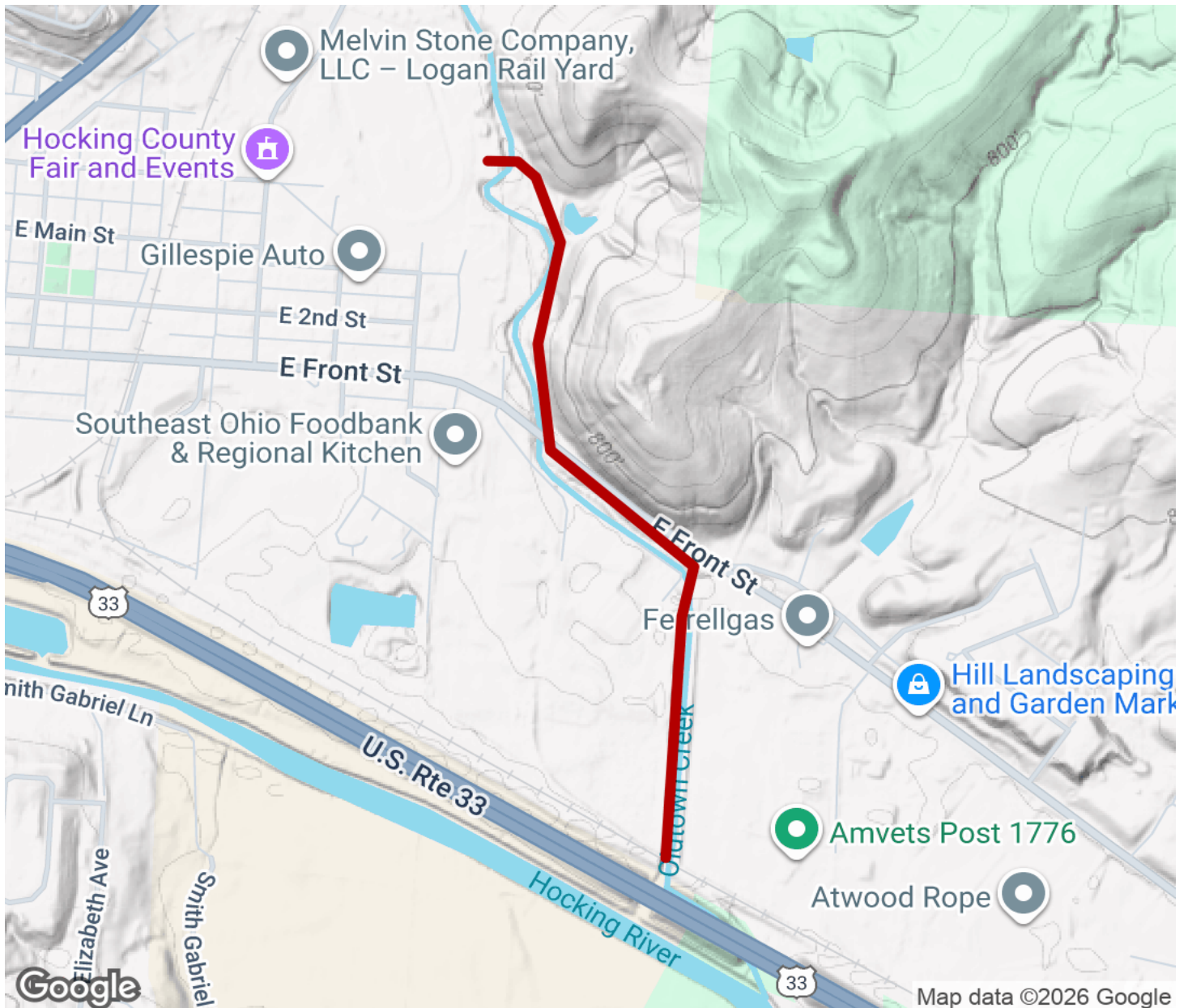
Parking for the Old Town Creek Trail is available at the Hocking County Fairgrounds in Logan. From US 33, take the exit for County Road 93/Mulberry Street and take a right into town. Then turn right onto E. Hunter Street and left onto N. Homer Avenue. That road turns into California Avenue, which skirts the edge of the fairgrounds property. The parking lot is located next to the county animal shelter.

To reach the Aqueduct Park trailhead from US 33, take the exit for County Road 93/Mulberry Street and take a right into town. Then take a right at the first traffic light onto Front Street. After 0.7 mile (just after the road crosses the creek), look for the parking lot on the right side of the road.



Old Town Creek Trail

Ohio



Trailhead



Restroom



Parking



Water Fountain



Tunnel



TrailLink
by Rails-to-Trails Conservancy

TrailLink.com