



2025

TrailLink Unlimited 

Guides   



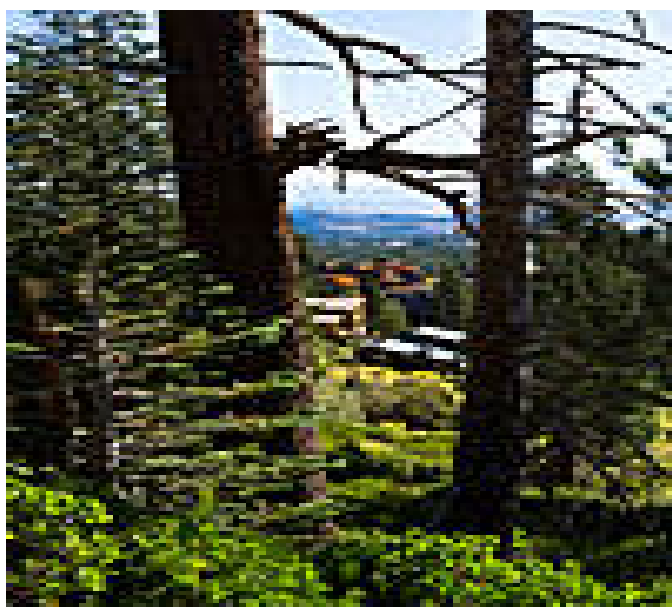
**Lodestar  
Connector**  
*California*



## Lodestar Connector

California

*The Lodestar Connector is a short link between neighborhoods of western Mammoth Lakes and the popular Town Loop, which*



The Lodestar Connector is a short link between neighborhoods of western Mammoth Lakes and the popular [Town Loop](#), which encircles the community. As its name suggests, the path parallels Lodestar Drive for most of its route. Like many of Mammoth Lakes' trails, the Lodestar Connector features smooth pavement and a stunning backdrop of mountains and woodlands.



**TrailLink**  
by Rails-to-Trails Conservancy

**TrailLink.com**



## Lodestar Connector

California

**States:** California

**Counties:** Mono

Length: 0.5miles

**Trail end points:** Majestic Pines Dr. to Town Loop at Lodestar Dr. and Meridian Blvd.

**Trail surfaces:** Asphalt

**Trail category:** Greenway/Non-RT

**Trail activities:** Bike,Inline

Skating,Wheelchair Accessible,Walking,Cross Country Skiing

## Parking & Trail Access

There are no parking areas for the Lodestar Connector. The trail can be accessed from the Town Loop at the intersection of Lodestar Drive and Meridian Boulevard or from Majestic Pines Drive.



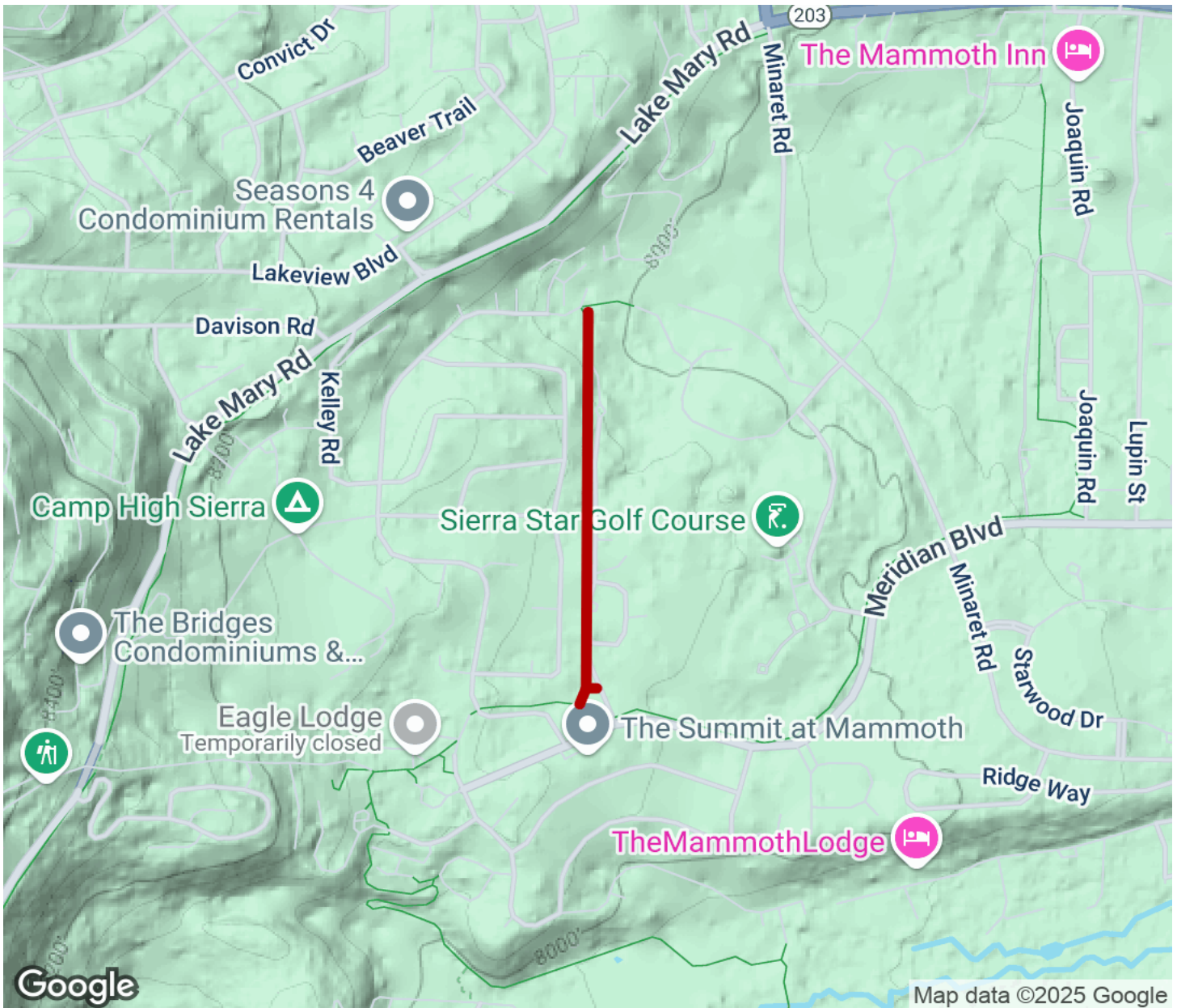
**TrailLink**  
by Rails-to-Trails Conservancy

**TrailLink.com**



# Lodestar Connector

California



Trailhead



Restroom



Parking



Water Fountain



Tunnel



**TrailLink**  
by Rails-to-Trails Conservancy

**TrailLink.com**