



2026

TrailLink Unlimited 

Guides



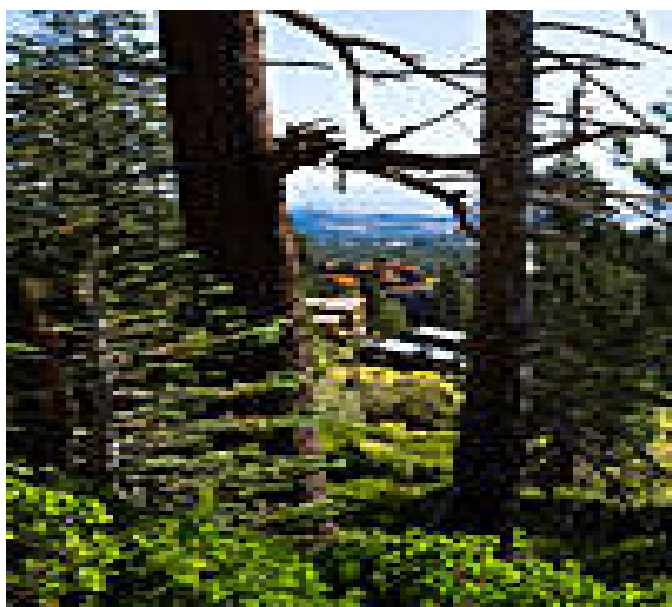
**Lodestar
Connector**
California



Lodestar Connector

California

The Lodestar Connector is a short link between neighborhoods of western Mammoth Lakes and the popular Town Loop, which



The Lodestar Connector is a short link between neighborhoods of western Mammoth Lakes and the popular [Town Loop](#), which encircles the community. As its name suggests, the path parallels Lodestar Drive for most of its route. Like many of Mammoth Lakes' trails, the Lodestar Connector features smooth pavement and a stunning backdrop of mountains and woodlands.



TrailLink
by Rails-to-Trails Conservancy

TrailLink.com



Lodestar Connector

California

States: California

Counties: Mono

Length: 0.5miles

Trail end points: Majestic Pines Dr. to Town Loop at Lodestar Dr. and Meridian Blvd.

Trail surfaces: Asphalt

Trail category: Greenway/Non-RT

Trail activities: Bike,Inline

Skating,Walking,Wheelchair Accessible,Cross Country Skiing

Parking & Trail Access

There are no parking areas for the Lodestar Connector. The trail can be accessed from the Town Loop at the intersection of Lodestar Drive and Meridian Boulevard or from Majestic Pines Drive.



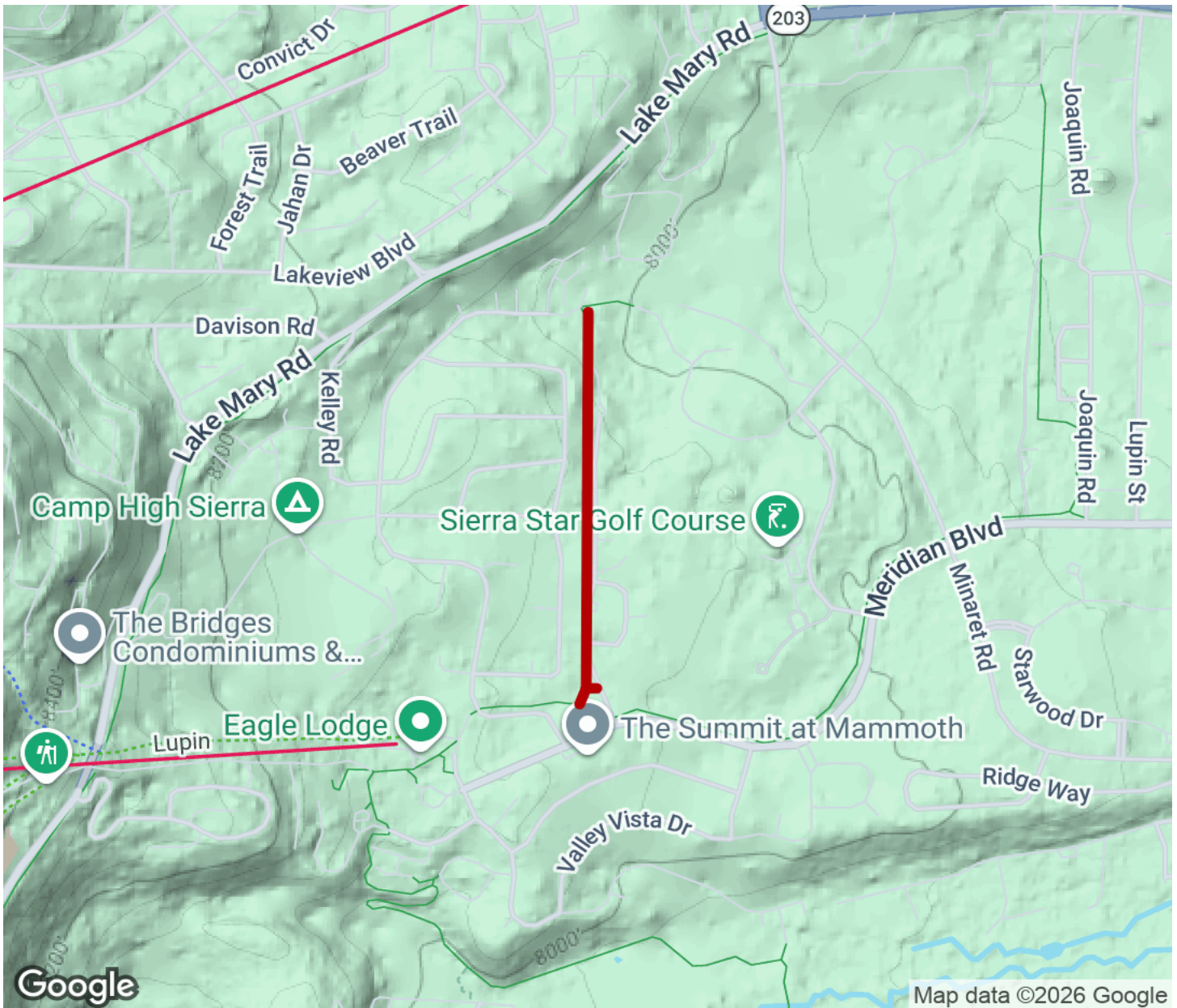
TrailLink
by Rails-to-Trails Conservancy

TrailLink.com



Lodestar Connector

California



- Trailhead
- Restroom
- Parking
- Water Fountain
- Tunnel