



2025

TrailLink Unlimited 

Guides



**Lord Fairfax  
Community  
College  
Connector  
Trail**  
*Virginia*



## Lord Fairfax Community College Connector Trail

Virginia

*Opened in 2009, the short Lord Fairfax Community College Connector Trail extends from the parking lot of the junior college to*



Opened in 2009, the short Lord Fairfax Community College Connector Trail extends from the parking lot of the junior college to its temporary endpoint in a scenic wildlife area. Eventually, an extended [Warrenton Branch Greenway](#) will connect to the trail, providing a valuable off-road link from Lord Fairfax Community College to downtown Warrenton.



# Lord Fairfax Community College Connector Trail

## Virginia

**States:** Virginia

**Counties:** Fauquier

**Length:** 0.3miles

**Trail end points:** Lord Fairfax Community College to Lord Fairfax Community College

**Trail surfaces:** Crushed Stone

**Trail category:** Greenway/Non-RT

**Trail activities:** Bike, Wheelchair Accessible, Walking

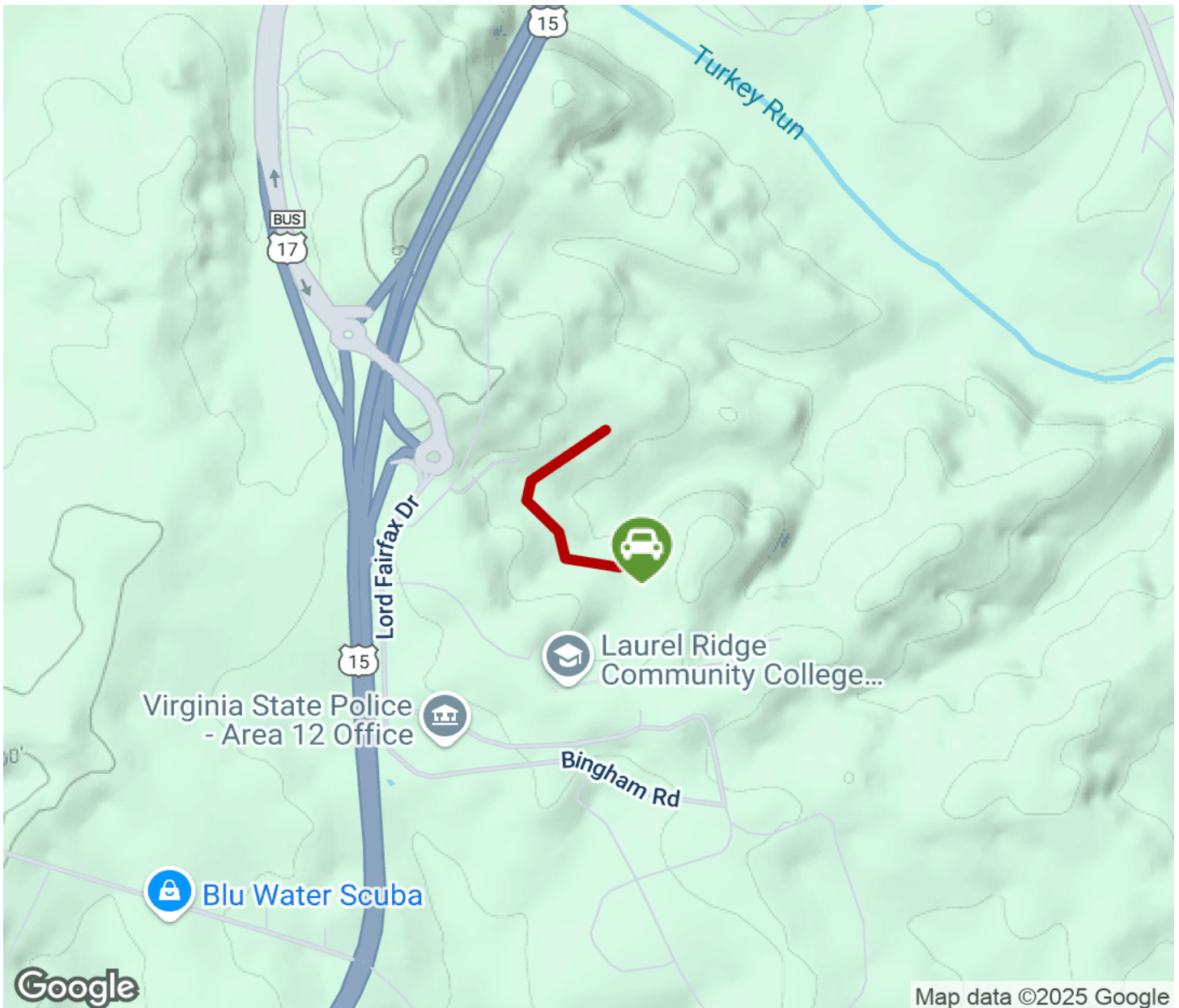
## Parking & Trail Access

Parking for the trail is available at Lord Fairfax Community College. From downtown Warrenton, take US 29 Business south to US 29's main alignment. Cross the highway and continue south on Lord Fairfax Road/Turkey Run Drive. Turn left on College Street to enter the parking lot behind the school. The trailhead is located at the parking lot's northeast corner.



# Lord Fairfax Community College Connector Trail

Virginia



Trailhead



Restroom



Parking



Water Fountain



Tunnel



**TrailLink**  
by Rails-to-Trails Conservancy

**TrailLink.com**