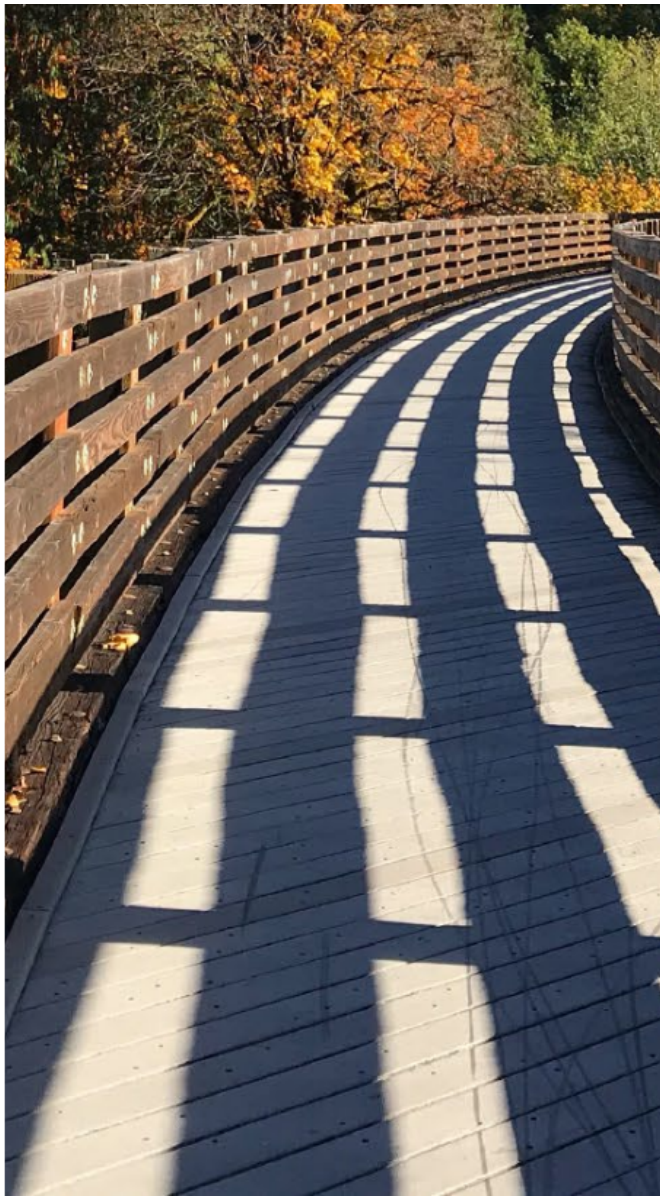




2024

TrailLink Unlimited 

Guides



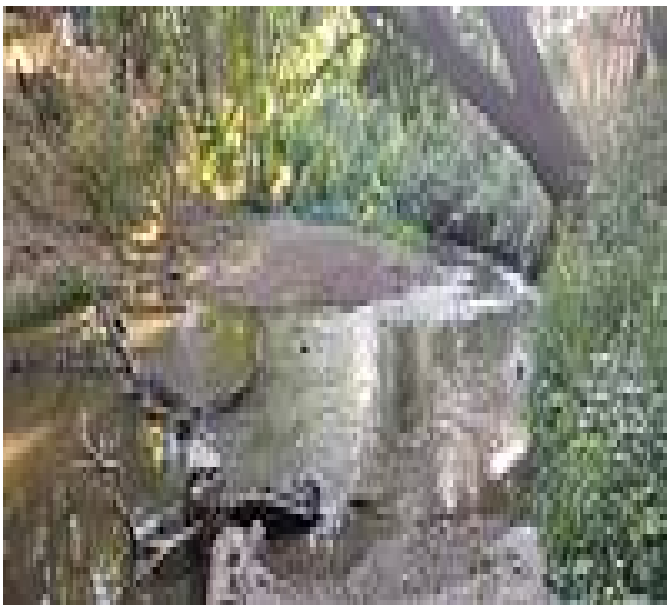
**Dry Creek  
Trail (Peggy  
Mensinger  
Trail)**

*California*



## Dry Creek Trail (Peggy Mensinger Trail) California

*The Peggy Mensinger Trail is a flat, paved, family—friendly greenway that runs west to east. With neighborhoods to the north*



plentiful shade.

There is a second entrance to the trail north of Dry Creek at the intersection of Scenic Drive and Coffee Road, which also features a parking area with an accessible parking spot. The midway point of the trail, East La Loma Park, offers restrooms, a new playground, tennis courts, a parking area, and a 27-hole disc golf course. The landscape starts opening up a bit, making it perfect for unimpeded disc golf. Bring plenty of water, especially in the summertime. Leaving the park as you cross under El Vista Avenue, the landscape changes quite dramatically to sandy soil and low bushes, highlighting the semiarid climate of the area.

Traveling farther east will bring you past the expansive public Creekside Golf Course. Once past here, the landscape changes again to a native oak forest to the north and farmland to the south. When you reach the underpass of Claus Road, you'll turn south to reach the eastern endpoint of the trail.

The Peggy Mensinger Trail is a flat, paved, family—friendly greenway that runs west to east. With neighborhoods to the north and south, it provides a popular gateway for residents. The trail parallels Dry Creek—aptly named, as the rainfall-dependent water flow typically runs quite low. The pathway is narrow, but as the trail meanders from side to side, you never feel restricted. Wildflowers are abundant throughout, and the birdlife is prolific, including yellow-billed magpies, American goldfinches, and Western scrub jays.

If you are planning to drive, the best place to begin is the trail's western endpoint at Moose Park, as the eastern endpoint does not have a parking area. Heading east from the western end, you'll pass through a thick forest of eucalyptus trees running through Kewin Park that offers



# Dry Creek Trail (Peggy Mensinger Trail)

California

**States:** California

**Counties:** Stanislaus

Length: 4.7miles

**Trail end points:** Moose Park on N. Morton Blvd to Claus Rd & Creekwood Dr (Modesto)

**Trail surfaces:** Asphalt

**Trail category:** Greenway/Non-RT

**Trail activities:** Bike, Inline Skating, Wheelchair Accessible, Walking

## Parking & Trail Access

Parking for the Dry Creek Trail is available at Moose Park (512 N. Morton Boulevard) and East La Loma Park (2001 Edgebrook Drive) in Modesto.

Visit the [TrailLink map](#) for detailed directions.



# Dry Creek Trail (Peggy Mensinger Trail)

California



Trailhead



Restroom



Parking



Water Fountain



Tunnel



**TrailLink**  
by Rails-to-Trails Conservancy

**TrailLink.com**