



2025

TrailLink Unlimited 

Guides



**Dry Creek
Trail (Peggy
Mensinger
Trail)**

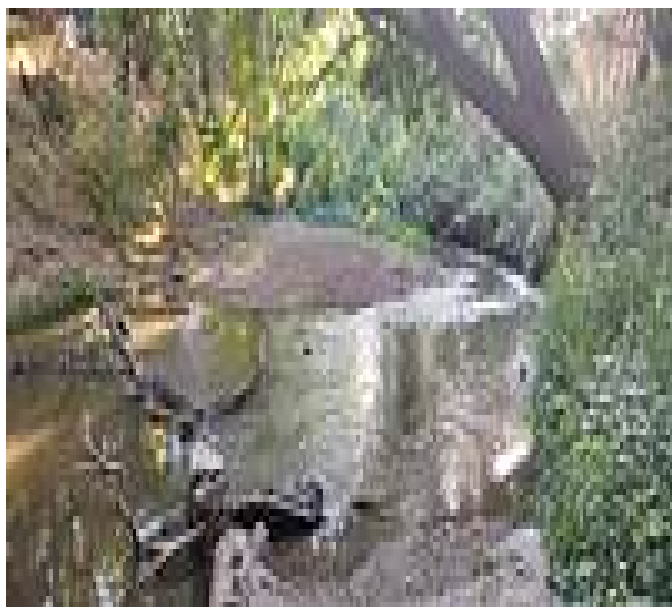
California



Dry Creek Trail (Peggy Mensinger Trail)

California

The 5.6-mile Peggy Mensinger Trail (often called the Dry Creek Trail) is a flat, paved, family—friendly greenway that runs west to



parking area. Heading east from the western end, the trail passes through a thick forest of eucalyptus trees running through Kewin Park that offers plentiful shade.

There is a second entrance to the trail north of Dry Creek at the intersection of Scenic Drive and Coffee Road, which also features a parking area with an accessible parking spot. The midway point of the trail, East La Loma Park, offers restrooms, a new playground, tennis courts, a parking area, and a 27-hole disc golf course. The landscape starts opening up a bit, making it perfect for unimpeded disc golf. Bring plenty of water, especially in the summertime. Leaving the park as the route crosses under El Vista Avenue, the landscape changes quite dramatically to sandy soil and low bushes, highlighting the semiarid climate of the area.

Traveling farther east will bring trail users past the expansive public Creekside Golf Course. Once past here, the landscape changes again to a native oak forest to the north and farmland to the south. When the trail reaches the underpass of Claus Road, the trail turns south to reach the eastern endpoint of the trail.

The 5.6-mile Peggy Mensinger Trail (often called the Dry Creek Trail) is a flat, paved, family—friendly greenway that runs west to east. With neighborhoods to the north and south, it provides a popular gateway for residents. The trail parallels Dry Creek—aptly named, as the rainfall-dependent water flow typically runs quite low. The pathway is narrow, but as the trail meanders from side to side, it never feels restricted. Wildflowers are abundant throughout, and the birdlife is prolific, including yellow-billed magpies, American goldfinches, and Western scrub jays.

About the Route

A good place to begin is the trail's western endpoint at Moose Park, as the eastern endpoint does not have a



Dry Creek Trail (Peggy Mensinger Trail)

California

States: California

Counties: Stanislaus

Length: 5.65miles

Trail end points: Kewin Park, 401 Buena Vista (Modesto) to Creekwood Dr. (Modesto)

Trail surfaces: Asphalt

Trail category: Greenway/Non-RT

Trail activities: Bike, Inline

Skating, Wheelchair Accessible, Walking

Parking & Trail Access

The Dry Creek Trail (Modesto) runs between Kewin Park, 401 Buena Vista (Modesto) and Creekwood Dr. (Modesto).

Parking is available at:

- East La Loma Park, 2001 Edgebrook Dr. (Modesto)

See [TrailLink Map](#) for all parking options and detailed directions.



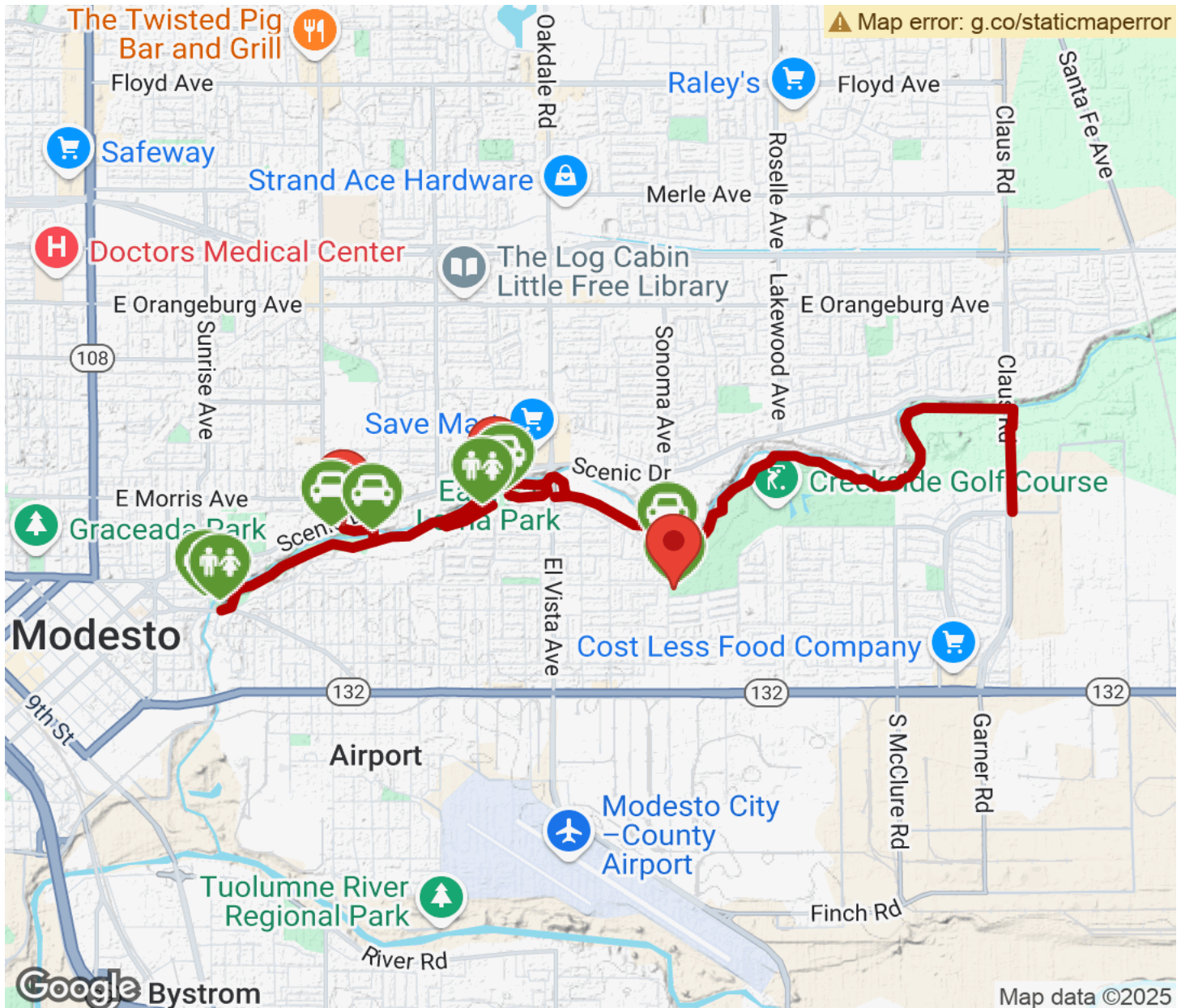
TrailLink
by Rails-to-Trails Conservancy

TrailLink.com



Dry Creek Trail (Peggy Mensinger Trail)

California



Trailhead



Restroom



Parking



Water Fountain



Tunnel



TrailLink
by Rails-to-Trails Conservancy

TrailLink.com