



2025

TrailLink Unlimited



Guides



**Fred Meijer
Millennium
Trail**
Michigan



Fred Meijer Millennium Trail

Michigan

The Fred Meijer Millennium Trail courses through the 1,500-acre Millennium Park in Walker, a community southwest of Grand



The Fred Meijer Millennium Trail courses through the 1,500-acre Millennium Park in Walker, a community southwest of Grand Rapids. The trail network has both paved and crushed stone trails, allowing for a variety of experiences through rolling hills and wetlands. A beach, boating center and splashpad make the park a favorite in the summer months.

At both the southern and eastern edges of the park, the Fred Meijer Millennium Trail connects to the [Kent Trails](#) system, allowing trail users to continue throughout Grand Rapids and its southern suburbs. In the north, the trail leads to the [Fred Meijer Standale Trail](#), which links Millennium Park with the Standale area of Walker.



Fred Meijer Millennium Trail

Michigan

States: Michigan

Counties: Kent

Length: 11miles

Trail end points: Kent Trails near John Ball
Park & Zoo to Millennium Park

Trail surfaces: Asphalt, Boardwalk, Crushed
Stone

Trail category: Greenway/Non-RT

Trail activities: Bike, Inline

Skating, Fishing, Wheelchair

Accessible, Walking, Cross Country Skiing

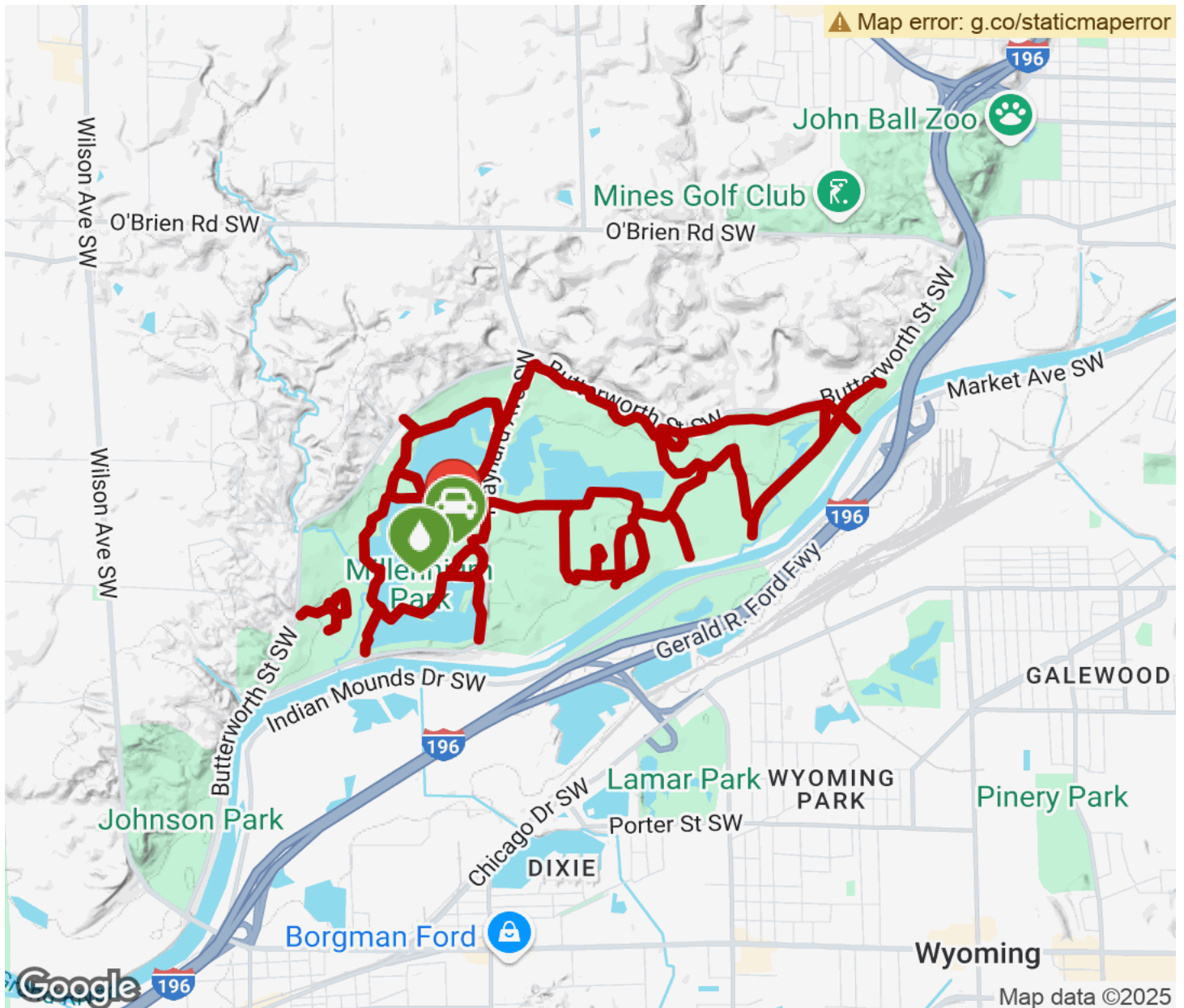
Parking & Trail Access

Parking for the Fred Meijer Millennium Trail is available in Millennium Park at several large parking lots off Maynard Avenue. Additional parking can be found at the Kent Trails North Trailhead at Butterworth Street and O'Brien Road.



Fred Meijer Millennium Trail

Michigan



Trailhead



Restroom



Parking



Water Fountain



Tunnel



TrailLink
by Rails-to-Trails Conservancy

TrailLink.com